

KCNH3 Polyclonal Antibody

Catalog No :	YT2457
Reactivity :	Human;Mouse;Rat
Applications :	WB;IHC
Target :	KCNH3
Gene Name :	KCNH3
Protein Name :	Potassium voltage-gated channel subfamily H member 3
Human Gene Id :	23416
Human Swiss Prot No :	Q9ULD8
Mouse Swiss Prot No :	Q9WVJ0
Rat Gene Id :	27150
Rat Swiss Prot No :	O89047
Immunogen :	Synthesized peptide derived from KCNH3 . at AA range: 470-550
Specificity :	KCNH3 Polyclonal Antibody detects endogenous levels of KCNH3 protein.
Formulation :	Liquid in PBS containing 50% glycerol, 0.5% BSA and 0.02% sodium azide.
Source :	Polyclonal, Rabbit,IgG
Dilution :	WB 1:500-2000;IHC 1:50-300
Purification :	The antibody was affinity-purified from rabbit antiserum by affinity-chromatography using epitope-specific immunogen.
Concentration :	1 mg/ml

Storage Stability : -15°C to -25°C/1 year(Do not lower than -25°C)

Observed Band : 120kD

Background :

The protein encoded by this gene is a voltage-gated potassium channel alpha subunit predominantly expressed in the forebrain. Studies in mice have found that cognitive function increases when this gene is knocked out. In humans, the encoded protein has been shown to be capable of binding glycoprotein 120 of the human immunodeficiency virus type 1 (HIV-1) envelope. Two transcript variants encoding different isoforms have been found for this gene. [provided by RefSeq, Sep 2015],

Function :

domain:The segment S4 is probably the voltage-sensor and is characterized by a series of positively charged amino acids at every third position.,function:Pore-forming (alpha) subunit of voltage-gated potassium channel. Elicits an outward current with fast inactivation. Channel properties may be modulated by cAMP and subunit assembly.,similarity:Belongs to the potassium channel family. H (Eag) subfamily.,similarity:Contains 1 cyclic nucleotide-binding domain.,similarity:Contains 1 PAC (PAS-associated C-terminal) domain.,similarity:Contains 1 PAS (PER-ARNT-SIM) domain.,subunit:The potassium channel is probably composed of a homo- or heterotetrameric complex of pore-forming alpha subunits that can associate with modulating beta subunits.,tissue specificity:Detected only in brain, in particular in the telencephalon. Detected in the cerebral cortex, occipital pole, frontal and temporal lobe,

Subcellular Location : Membrane; Multi-pass membrane protein.

Expression :

Detected only in brain, in particular in the telencephalon. Detected in the cerebral cortex, occipital pole, frontal and temporal lobe, putamen, amygdala, hippocampus and caudate nucleus.

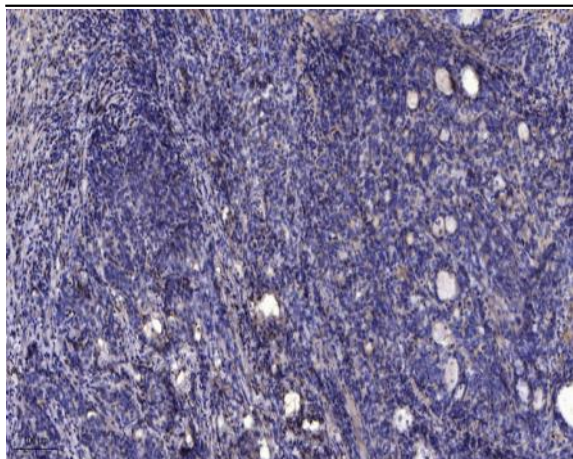
Sort : 8858

No4 : 1

Host : Rabbit

Modifications : Unmodified

Products Images



Immunohistochemical analysis of paraffin-embedded human Gastric adenocarcinoma. 1, Antibody was diluted at 1:200(4° overnight). 2, Tris-EDTA,pH9.0 was used for antigen retrieval. 3,Secondary antibody was diluted at 1:200(room temperature, 45min).