

## HisRS Polyclonal Antibody

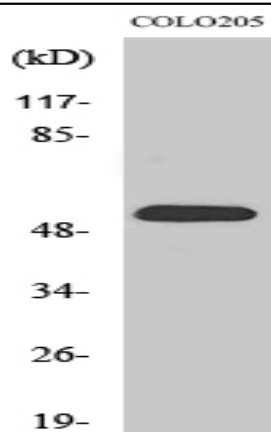
<b>Catalog No :</b>	YT2139
<b>Reactivity :</b>	Human;Mouse
<b>Applications :</b>	WB;IHC;IF;ELISA
<b>Target :</b>	HisRS
<b>Fields :</b>	>>Aminoacyl-tRNA biosynthesis
<b>Gene Name :</b>	HARS
<b>Protein Name :</b>	Histidine--tRNA ligase cytoplasmic
<b>Human Gene Id :</b>	3035
<b>Human Swiss Prot No :</b>	P12081
<b>Mouse Gene Id :</b>	15115
<b>Mouse Swiss Prot No :</b>	Q61035
<b>Immunogen :</b>	The antiserum was produced against synthesized peptide derived from human HARS. AA range:460-509
<b>Specificity :</b>	HisRS Polyclonal Antibody detects endogenous levels of HisRS protein.
<b>Formulation :</b>	Liquid in PBS containing 50% glycerol, 0.5% BSA and 0.02% sodium azide.
<b>Source :</b>	Polyclonal, Rabbit,IgG
<b>Dilution :</b>	WB 1:500 - 1:2000. IHC 1:100 - 1:300. IF 1:200 - 1:1000. ELISA: 1:20000. Not yet tested in other applications.
<b>Purification :</b>	The antibody was affinity-purified from rabbit antiserum by affinity-chromatography using epitope-specific immunogen.
<b>Concentration :</b>	1 mg/ml

---

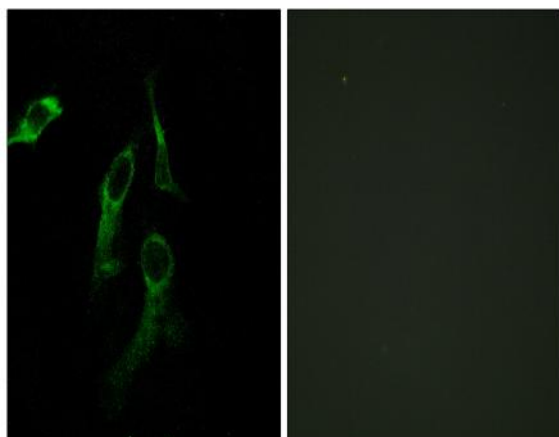
<b>Storage Stability :</b>	-15°C to -25°C/1 year(Do not lower than -25°C)
<b>Observed Band :</b>	60kD
<b>Cell Pathway :</b>	Aminoacyl-tRNA biosynthesis;
<b>Background :</b>	Aminoacyl-tRNA synthetases are a class of enzymes that charge tRNAs with their cognate amino acids. The protein encoded by this gene is a cytoplasmic enzyme which belongs to the class II family of aminoacyl-tRNA synthetases. The enzyme is responsible for the synthesis of histidyl-transfer RNA, which is essential for the incorporation of histidine into proteins. The gene is located in a head-to-head orientation with HARS1 on chromosome five, where the homologous genes share a bidirectional promoter. The gene product is a frequent target of autoantibodies in the human autoimmune disease polymyositis/dermatomyositis. Several transcript variants encoding different isoforms have been found for this gene. [provided by RefSeq, Apr 2012],
<b>Function :</b>	catalytic activity:ATP + L-histidine + tRNA(His) = AMP + diphosphate + L-histidyl-tRNA(His).,similarity:Belongs to the class-II aminoacyl-tRNA synthetase family.,similarity:Contains 1 WHEP-TRS domain.,tissue specificity:Brain, heart, liver and kidney.,
<b>Subcellular Location :</b>	Cytoplasm .
<b>Expression :</b>	Brain, heart, liver and kidney.
<b>Sort :</b>	7369
<b>No4 :</b>	1
<b>Host :</b>	Rabbit
<b>Modifications :</b>	Unmodified

---

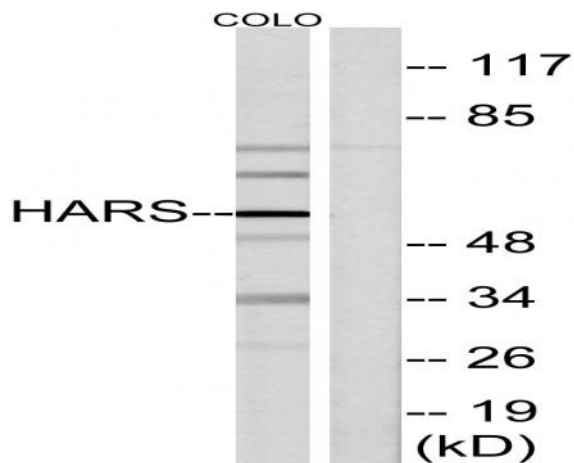
## Products Images



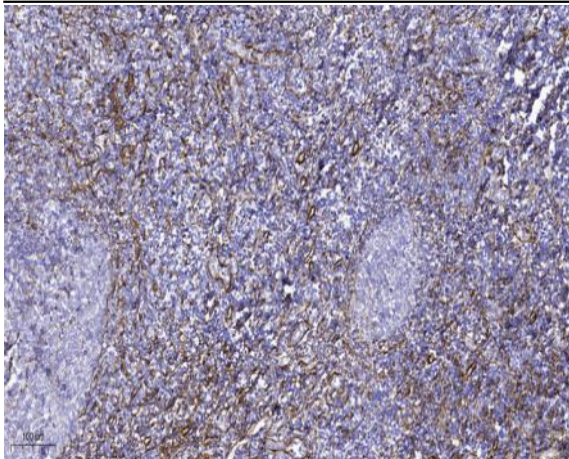
Western Blot analysis of various cells using HisRS Polyclonal Antibody diluted at 1:2000



Immunofluorescence analysis of HepG2 and HeLa cells, using HARS Antibody. The picture on the right is blocked with the synthesized peptide.



Western blot analysis of lysates from COLO cells, using HARS Antibody. The lane on the right is blocked with the synthesized peptide.



Immunohistochemical analysis of paraffin-embedded human tonsil. 1, Tris-EDTA, pH 9.0 was used for antigen retrieval. 2 Antibody was diluted at 1:200 (4° overnight). 3, Secondary antibody was diluted at 1:200 (room temperature, 45 min).