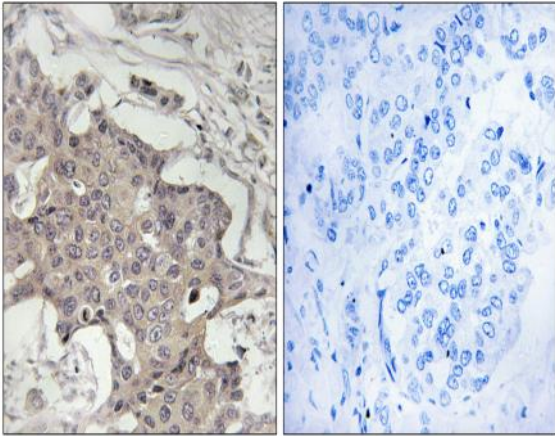


HIBADH Polyclonal Antibody

Catalog No :	YT2131
Reactivity :	Human;Mouse;Rat
Applications :	IHC;IF;ELISA
Target :	HIBADH
Fields :	>>Valine, leucine and isoleucine degradation;>>Metabolic pathways
Gene Name :	HIBADH
Protein Name :	3-hydroxyisobutyrate dehydrogenase mitochondrial
Human Gene Id :	11112
Human Swiss Prot No :	P31937
Mouse Gene Id :	58875
Mouse Swiss Prot No :	Q99L13
Rat Gene Id :	63938
Rat Swiss Prot No :	P29266
Immunogen :	The antiserum was produced against synthesized peptide derived from human HIBADH. AA range:281-330
Specificity :	HIBADH Polyclonal Antibody detects endogenous levels of HIBADH protein.
Formulation :	Liquid in PBS containing 50% glycerol, 0.5% BSA and 0.02% sodium azide.
Source :	Polyclonal, Rabbit,IgG
Dilution :	IHC 1:100 - 1:300. ELISA: 1:10000.. IF 1:50-200

Purification :	The antibody was affinity-purified from rabbit antiserum by affinity-chromatography using epitope-specific immunogen.
Concentration :	1 mg/ml
Storage Stability :	-15°C to -25°C/1 year(Do not lower than -25°C)
Molecularweight :	35kD
Cell Pathway :	Valine; leucine and isoleucine degradation;
Background :	This gene encodes a mitochondrial 3-hydroxyisobutyrate dehydrogenase enzyme. The encoded protein plays a critical role in the catabolism of L-valine by catalyzing the oxidation of 3-hydroxyisobutyrate to methylmalonate semialdehyde. [provided by RefSeq, Nov 2011],
Function :	catalytic activity:3-hydroxy-2-methylpropanoate + NAD(+) = 2-methyl-3-oxopropanoate + NADH.,similarity:Belongs to the 3-hydroxyisobutyrate dehydrogenase family.,subunit:Homodimer.,
Subcellular Location :	Mitochondrion.
Expression :	Detected in skin fibroblasts.
Sort :	7346
No4 :	1
Host :	Rabbit
Modifications :	Unmodified

Products Images



Immunohistochemistry analysis of paraffin-embedded human breast carcinoma tissue, using HIBADH Antibody. The picture on the right is blocked with the synthesized peptide.