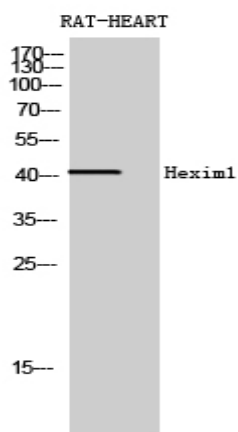


Hexim1 Polyclonal Antibody

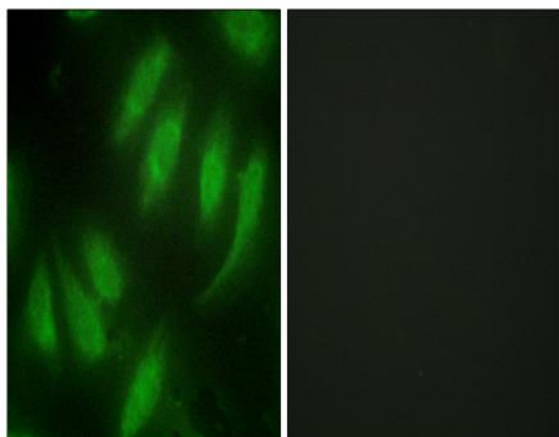
Catalog No :	YT2129
Reactivity :	Human;Mouse;Rat
Applications :	WB;IHC;IF;ELISA
Target :	Hexim1
Gene Name :	HEXIM1
Protein Name :	Protein HEXIM1
Human Gene Id :	10614
Human Swiss Prot No :	O94992
Mouse Gene Id :	192231
Mouse Swiss Prot No :	Q8R409
Rat Gene Id :	498008
Rat Swiss Prot No :	Q5M9G1
Immunogen :	The antiserum was produced against synthesized peptide derived from human HEXIM1. AA range:181-230
Specificity :	Hexim1 Polyclonal Antibody detects endogenous levels of Hexim1 protein.
Formulation :	Liquid in PBS containing 50% glycerol, 0.5% BSA and 0.02% sodium azide.
Source :	Polyclonal, Rabbit,IgG
Dilution :	WB 1:500 - 1:2000. IHC 1:100 - 1:300. IF 1:200 - 1:1000. ELISA: 1:10000. Not yet tested in other applications.
Purification :	The antibody was affinity-purified from rabbit antiserum by affinity-chromatography using epitope-specific immunogen.

Concentration :	1 mg/ml
Storage Stability :	-15°C to -25°C/1 year(Do not lower than -25°C)
Observed Band :	40kD
Background :	Expression of this gene is induced by hexamethylene-bis-acetamide in vascular smooth muscle cells. This gene has no introns. [provided by RefSeq, Jul 2008],
Function :	domain:The coiled-coil domain mediates oligomerization.,function:Transcriptional regulator which functions as a general RNA polymerase II transcription inhibitor. In cooperation with 7SK snRNA sequesters P-TEFb in a large inactive 7SK snRNP complex preventing RNA polymerase II phosphorylation and subsequent transcriptional elongation. May also regulate NF-kappa-B, ESR1, NR3C1 and CIITA-dependent transcriptional activity.,induction:Up-regulated by HMBA (hexamethylene bisacetamide) (at protein level). Down-regulated by estrogen.,miscellaneous:Inhibits Tat activity which is required for HIV-1 transcription.,similarity:Belongs to the HEXIM family.,subcellular location:Binds alpha-importin and is mostly nuclear.,subunit:Homooligomer and heterooligomer with HEXIM2; probably dimeric. Component of the 7SK snRNP complex at least composed of P-TEFb (composed of CDK9 and CCNT1/cyclin-T1), HEXIM1, H
Subcellular Location :	Nucleus . Cytoplasm . Binds alpha-importin and is mostly nuclear (PubMed:16362050).
Expression :	Ubiquitously expressed with higher expression in placenta. HEXIM1 and HEXIM2 are differentially expressed. Expressed in endocrine tissues.
Tag :	hot
Sort :	7331
No4 :	1
Host :	Rabbit
Modifications :	Unmodified

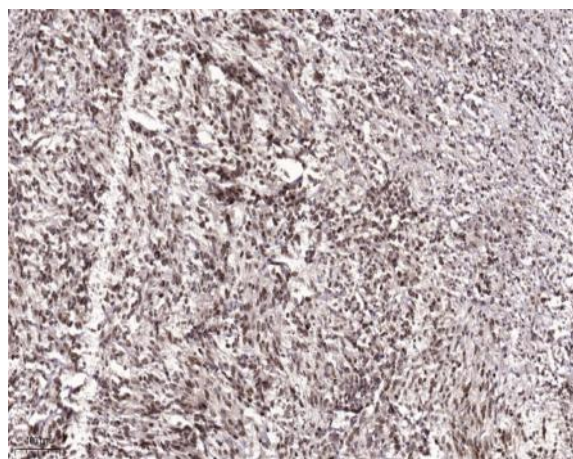
Products Images



Western Blot analysis of RAT-HEART cells using Hexim1 Polyclonal Antibody diluted at 1:2000



Immunofluorescence analysis of HeLa cells, using HEXIM1 Antibody. The picture on the right is blocked with the synthesized peptide.



Immunohistochemical analysis of paraffin-embedded human Colon cancer. 1, Antibody was diluted at 1:200(4° overnight). 2, Tris-EDTA,pH9.0 was used for antigen retrieval. 3,Secondary antibody was diluted at 1:200(room temperature, 45min).