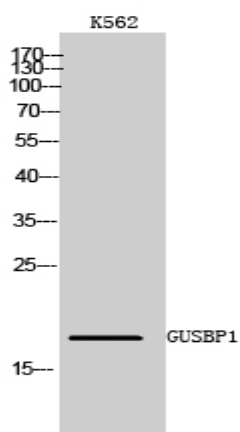


GUSBP1 Polyclonal Antibody

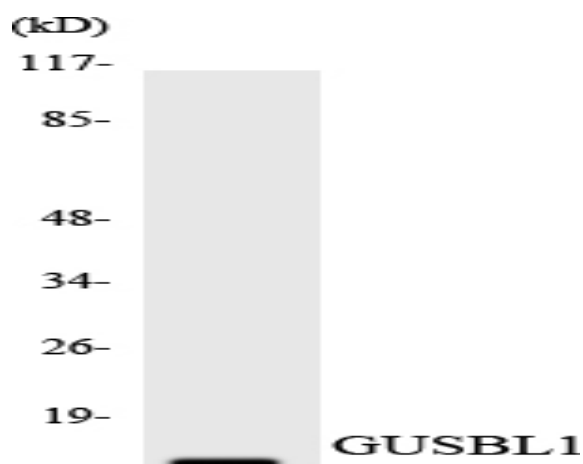
Catalog No :	YT2089
Reactivity :	Human
Applications :	WB;ELISA
Target :	GUSBP1
Gene Name :	GUSBP1
Protein Name :	Putative beta-glucuronidase-like protein SMA3
Human Gene Id :	153561
Human Swiss Prot No :	Q15486
Immunogen :	The antiserum was produced against synthesized peptide derived from human GUSBL1. AA range:51-100
Specificity :	GUSBP1 Polyclonal Antibody detects endogenous levels of GUSBP1 protein.
Formulation :	Liquid in PBS containing 50% glycerol, 0.5% BSA and 0.02% sodium azide.
Source :	Polyclonal, Rabbit,IgG
Dilution :	WB 1:500 - 1:2000. ELISA: 1:40000. Not yet tested in other applications.
Purification :	The antibody was affinity-purified from rabbit antiserum by affinity-chromatography using epitope-specific immunogen.
Concentration :	1 mg/ml
Storage Stability :	-15°C to -25°C/1 year(Do not lower than -25°C)
Observed Band :	18kD
Background :	Binds GTP, GDP and GMP.

Function :	skeletal system development,
Expression :	Ubiquitous.
Sort :	7200
No4 :	1
Host :	Rabbit
Modifications :	Unmodified

Products Images



Western Blot analysis of K562 cells using GUSBP1 Polyclonal Antibody



Western blot analysis of the lysates from HT-29 cells using GUSBL1 antibody.