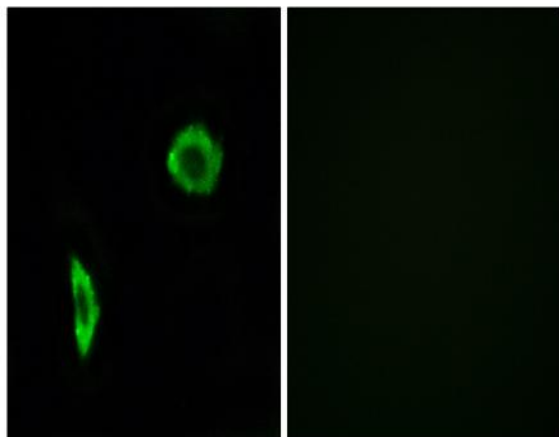


IP Receptor Polyclonal Antibody

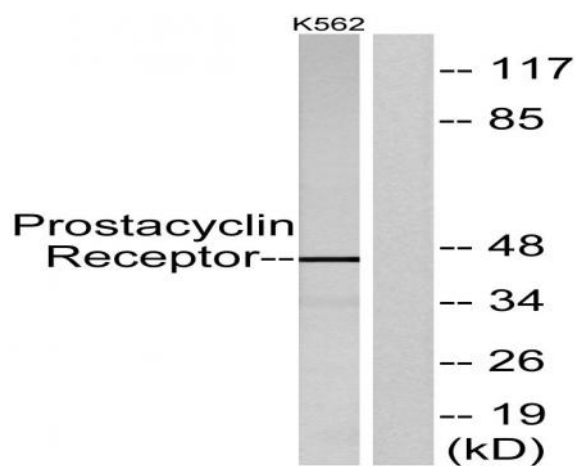
| | |
|------------------------------|---|
| Catalog No : | YT2378 |
| Reactivity : | Human;Rat;Mouse; |
| Applications : | WB;ELISA;IHC |
| Target : | IP Receptor |
| Fields : | >>Neuroactive ligand-receptor interaction;>>Vascular smooth muscle contraction;>>Platelet activation |
| Gene Name : | PTGIR |
| Protein Name : | Prostacyclin receptor |
| Human Gene Id : | 5739 |
| Human Swiss Prot No : | P43119 |
| Mouse Swiss Prot No : | P43252 |
| Immunogen : | The antiserum was produced against synthesized peptide derived from human Prostacyclin Receptor. AA range:198-247 |
| Specificity : | IP Receptor Polyclonal Antibody detects endogenous levels of IP Receptor protein. |
| Formulation : | Liquid in PBS containing 50% glycerol, 0.5% BSA and 0.02% sodium azide. |
| Source : | Polyclonal, Rabbit,IgG |
| Dilution : | WB 1:500-2000;IHC 1:50-300; ELISA 2000-20000 |
| Purification : | The antibody was affinity-purified from rabbit antiserum by affinity-chromatography using epitope-specific immunogen. |
| Concentration : | 1 mg/ml |

| | |
|-------------------------------|--|
| Storage Stability : | <u>-15°C to -25°C/1 year(Do not lower than -25°C)</u> |
| Observed Band : | <u>45kD</u> |
| Cell Pathway : | <u>Neuroactive ligand-receptor interaction;Vascular smooth muscle contraction;</u> |
| Background : | <u>The protein encoded by this gene is a member of the G-protein coupled receptor family 1 and has been shown to be a receptor for prostacyclin. Prostacyclin, the major product of cyclooxygenase in macrovascular endothelium, elicits a potent vasodilation and inhibition of platelet aggregation through binding to this receptor. [provided by RefSeq, Jul 2008],</u> |
| Function : | <u>function:Receptor for prostacyclin (prostaglandin I2 or PGI2). The activity of this receptor is mediated by G(s) proteins which activate adenylate cyclase.,PTM:Isoprenylation does not influence ligand binding but is required for efficient coupling to the effectors adenylyl cyclase and phospholipase C.,PTM:Palmitoylation of either Cys-308 or Cys-311 is sufficient to maintain functional coupling to G(s) and signaling.,similarity:Belongs to the G-protein coupled receptor 1 family.,</u> |
| Subcellular Location : | <u>Cell membrane; Multi-pass membrane protein.</u> |
| Expression : | <u>Lung,Pancreas,Placenta,</u> |
| Sort : | <u>8632</u> |
| No4 : | <u>1</u> |
| Host : | <u>Rabbit</u> |
| Modifications : | <u>Unmodified</u> |

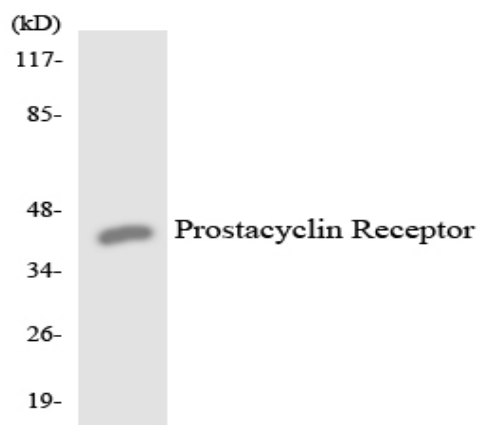
Products Images



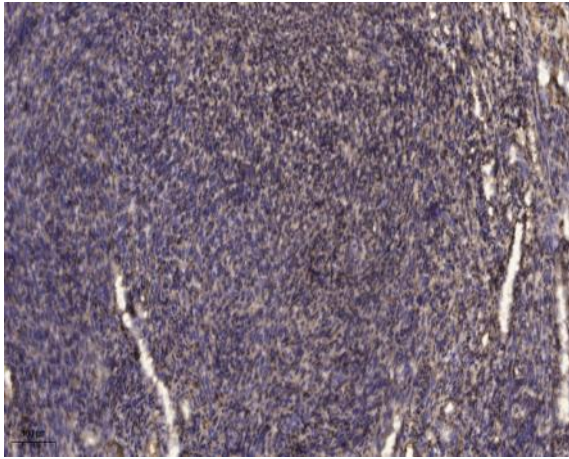
Immunofluorescence analysis of LOVO cells, using Prostacyclin Receptor Antibody. The picture on the right is blocked with the synthesized peptide.



Western blot analysis of lysates from K562 cells, using Prostacyclin Receptor Antibody. The lane on the right is blocked with the synthesized peptide.



Western blot analysis of the lysates from HUVEC cells using Prostacyclin Receptor antibody.



Immunohistochemical analysis of paraffin-embedded human uterus. 1, Antibody was diluted at 1:200(4° overnight). 2, Tris-EDTA,pH9.0 was used for antigen retrieval. 3,Secondary antibody was diluted at 1:200(room temperature, 45min).