

Integrin β 5 Polyclonal Antibody

Catalog No :	YT2373
Reactivity :	Human;Mouse;Rat;Monkey
Applications :	WB;ELISA
Target :	Integrin β 5
Fields :	>>Phagosome;>>PI3K-Akt signaling pathway;>>Focal adhesion;>>ECM-receptor interaction;>>Regulation of actin cytoskeleton;>>Human papillomavirus infection;>>Proteoglycans in cancer;>>Hypertrophic cardiomyopathy;>>Arrhythmogenic right ventricular cardiomyopathy;>>Dilated cardiomyopathy
Gene Name :	ITGB5
Protein Name :	Integrin beta-5
Human Gene Id :	3693
Human Swiss Prot No :	P18084
Mouse Gene Id :	16419
Mouse Swiss Prot No :	O70309
Immunogen :	The antiserum was produced against synthesized peptide derived from human Integrin beta5. AA range:721-770
Specificity :	Integrin β 5 Polyclonal Antibody detects endogenous levels of Integrin β 5 protein.
Formulation :	Liquid in PBS containing 50% glycerol, 0.5% BSA and 0.02% sodium azide.
Source :	Polyclonal, Rabbit,IgG
Dilution :	WB 1:500 - 1:2000. ELISA: 1:20000. Not yet tested in other applications.
Purification :	The antibody was affinity-purified from rabbit antiserum by affinity-

chromatography using epitope-specific immunogen.

Concentration : 1 mg/ml

Storage Stability : -15°C to -25°C/1 year(Do not lower than -25°C)

Observed Band : 88kD

Cell Pathway : Focal adhesion;ECM-receptor interaction;Regulates Actin and Cytoskeleton;Hypertrophic cardiomyopathy (HCM);Arrhythmogenic right ventricular cardiomyopathy (ARVC);Dilated cardiomyopathy;

Background : function:Integrin alpha-V/beta-5 is a receptor for fibronectin. It recognizes the sequence R-G-D in its ligand.,similarity:Belongs to the integrin beta chain family.,similarity:Contains 1 PSI domain.,similarity:Contains 1 VWFA domain.,subunit:Heterodimer of an alpha and a beta subunit. Beta-5 associates with alpha-V.,

Function : function:Integrin alpha-V/beta-5 is a receptor for fibronectin. It recognizes the sequence R-G-D in its ligand.,similarity:Belongs to the integrin beta chain family.,similarity:Contains 1 PSI domain.,similarity:Contains 1 VWFA domain.,subunit:Heterodimer of an alpha and a beta subunit. Beta-5 associates with alpha-V.,

Subcellular Location : Membrane; Single-pass type I membrane protein.

Expression : Brain,Kidney,Thymic epithelium,

Tag : orthogonal

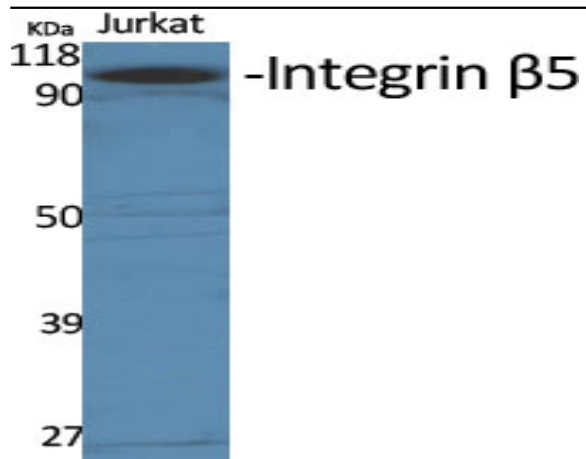
Sort : 1038

No4 : 1

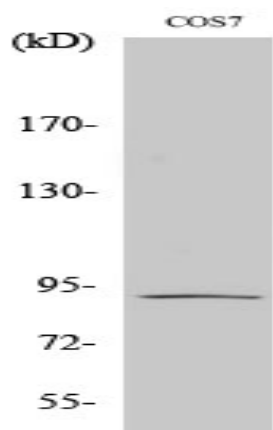
Host : Rabbit

Modifications : Unmodified

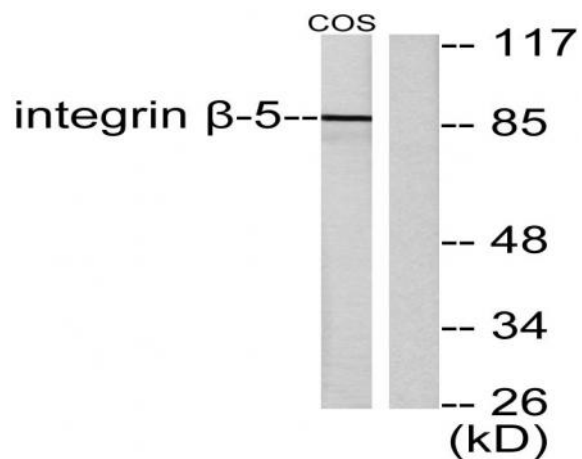
[Products Images](#)



Western Blot analysis of various cells using Integrin β 5 Polyclonal Antibody diluted at 1:1000



Western Blot analysis of COS7 cells using Integrin β 5 Polyclonal Antibody diluted at 1:1000



Western blot analysis of lysates from COS7 cells, using Integrin beta5 Antibody. The lane on the right is blocked with the synthesized peptide.