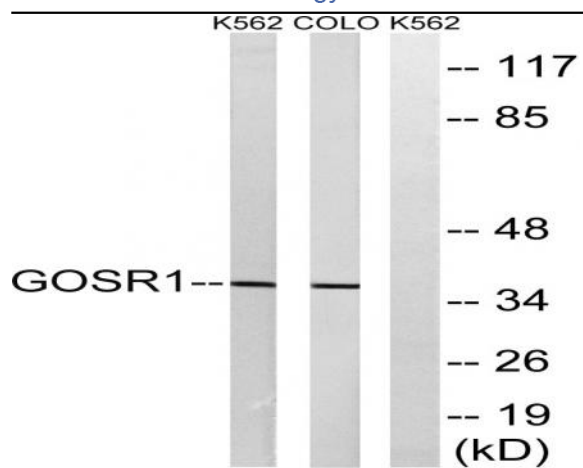


## GS28 Polyclonal Antibody

<b>Catalog No :</b>	YT2078
<b>Reactivity :</b>	Human;Rat;Mouse;
<b>Applications :</b>	WB;ELISA
<b>Target :</b>	GS28
<b>Fields :</b>	>>SNARE interactions in vesicular transport
<b>Gene Name :</b>	GOSR1
<b>Protein Name :</b>	Golgi SNAP receptor complex member 1
<b>Human Gene Id :</b>	9527
<b>Human Swiss Prot No :</b>	O95249
<b>Mouse Swiss Prot No :</b>	O88630
<b>Immunogen :</b>	The antiserum was produced against synthesized peptide derived from human GOSR1. AA range:11-60
<b>Specificity :</b>	GS28 Polyclonal Antibody detects endogenous levels of GS28 protein.
<b>Formulation :</b>	Liquid in PBS containing 50% glycerol, 0.5% BSA and 0.02% sodium azide.
<b>Source :</b>	Polyclonal, Rabbit,IgG
<b>Dilution :</b>	WB 1:500 - 1:2000. ELISA: 1:10000. Not yet tested in other applications.
<b>Purification :</b>	The antibody was affinity-purified from rabbit antiserum by affinity-chromatography using epitope-specific immunogen.
<b>Concentration :</b>	1 mg/ml
<b>Storage Stability :</b>	-15°C to -25°C/1 year(Do not lower than -25°C)

<b>Observed Band :</b>	28kD
<b>Cell Pathway :</b>	SNARE interactions in vesicular transport;
<b>Background :</b>	This gene encodes a trafficking membrane protein which transports proteins among the endoplasmic reticulum and the Golgi and between Golgi compartments. This protein is considered an essential component of the Golgi SNAP receptor (SNARE) complex. Alternatively spliced transcript variants encoding distinct isoforms have been found for this gene. [provided by RefSeq, Jul 2008],
<b>Function :</b>	function:Involved in transport from the ER to the Golgi apparatus as well as in intra-Golgi transport.,similarity:Belongs to the GOSR1 family.,subcellular location:Enriched on vesicular components at the terminal rims of the Golgi.,subunit:Interacts with GABARAPL2. Identified in a unique SNARE complex composed of the Golgi SNAREs GOSR2, STX5 and YKT6.,
<b>Subcellular Location :</b>	Golgi apparatus membrane ; Single-pass type IV membrane protein . Localizes throughout the Golgi apparatus, with lowest levels in the trans-Golgi network (By similarity). Enriched on vesicular components at the terminal rims of the Golgi. Found in Golgi microtubules at low temperature (15 degrees Celsius). .
<b>Expression :</b>	Colon carcinoma,Prostate,Testis,Umbilical cord blood,
<b>Sort :</b>	7155
<b>No4 :</b>	1
<b>Host :</b>	Rabbit
<b>Modifications :</b>	Unmodified

## Products Images



Western blot analysis of lysates from COLO and K562 cells, using GOSR1 Antibody. The lane on the right is blocked with the synthesized peptide.