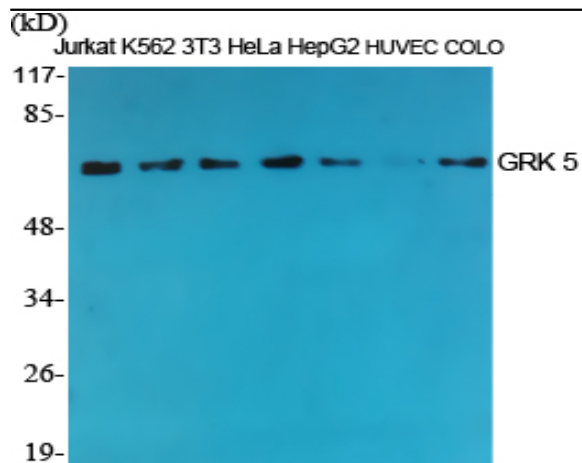


GRK 5 Polyclonal Antibody

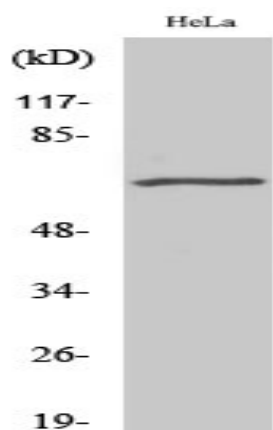
Catalog No :	YT2070
Reactivity :	Human;Mouse;Rat
Applications :	WB;IHC;IF;ELISA
Target :	GRK 5
Fields :	>>Chemokine signaling pathway;>>Endocytosis;>>Morphine addiction
Gene Name :	GRK5
Protein Name :	G protein-coupled receptor kinase 5
Human Gene Id :	2869
Human Swiss Prot No :	P34947
Mouse Gene Id :	14773
Mouse Swiss Prot No :	Q8VEB1
Rat Gene Id :	59075
Rat Swiss Prot No :	Q62833
Immunogen :	The antiserum was produced against synthesized peptide derived from human GRK5. AA range:351-400
Specificity :	GRK 5 Polyclonal Antibody detects endogenous levels of GRK 5 protein.
Formulation :	Liquid in PBS containing 50% glycerol, 0.5% BSA and 0.02% sodium azide.
Source :	Polyclonal, Rabbit,IgG
Dilution :	WB 1:500 - 1:2000. IHC 1:100 - 1:300. ELISA: 1:10000.. IF 1:50-200

Purification :	The antibody was affinity-purified from rabbit antiserum by affinity-chromatography using epitope-specific immunogen.
Concentration :	1 mg/ml
Storage Stability :	-15°C to -25°C/1 year(Do not lower than -25°C)
Observed Band :	68kD
Cell Pathway :	Chemokine;Endocytosis;
Background :	This gene encodes a member of the guanine nucleotide-binding protein (G protein)-coupled receptor kinase subfamily of the Ser/Thr protein kinase family. The protein phosphorylates the activated forms of G protein-coupled receptors thus initiating their deactivation. It has also been shown to play a role in regulating the motility of polymorphonuclear leukocytes (PMNs). [provided by RefSeq, Jul 2008],
Function :	catalytic activity:ATP + [G-protein-coupled receptor] = ADP + [G-protein-coupled receptor] phosphate.,function:Specifically phosphorylates the activated forms of G protein-coupled receptors.,similarity:Belongs to the protein kinase superfamily. AGC Ser/Thr protein kinase family. GPRK subfamily.,similarity:Contains 1 AGC-kinase C-terminal domain.,similarity:Contains 1 protein kinase domain.,similarity:Contains 1 RGS domain.,tissue specificity:Highest levels in heart, placenta, lung > skeletal muscle > brain, liver, pancreas > kidney.,
Subcellular Location :	Cytoplasm. Nucleus. Cell membrane; Peripheral membrane protein. Predominantly localized at the plasma membrane; targeted to the cell surface through the interaction with phospholipids. Nucleus localization is regulated in a GPCR and Ca(2+)/calmodulin-dependent fashion.
Expression :	Highest levels in heart, placenta, lung > skeletal muscle > brain, liver, pancreas > kidney.
Sort :	7128
No4 :	1
Host :	Rabbit
Modifications :	Unmodified

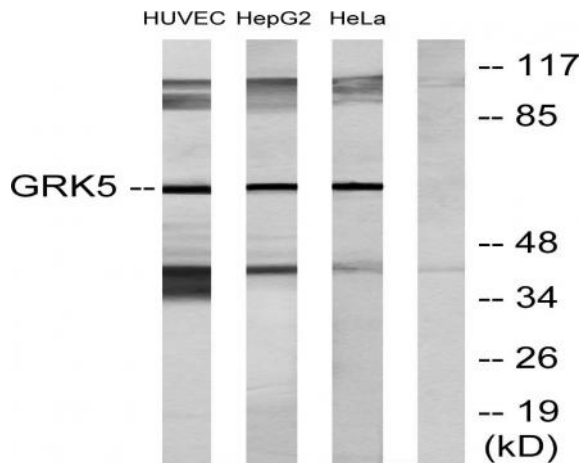
[Products Images](#)



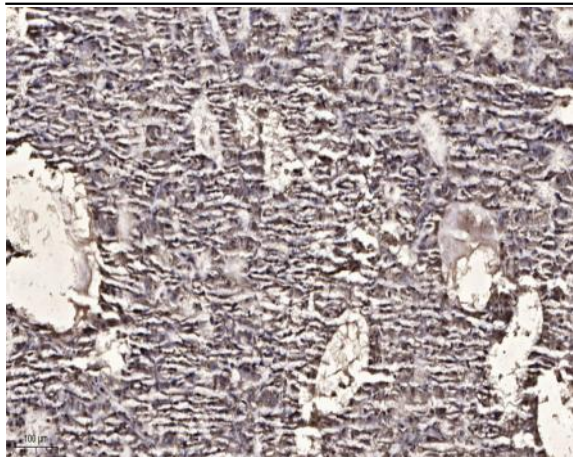
Western Blot analysis of various cells using GRK 5 Polyclonal Antibody



Western Blot analysis of COLO205 cells using GRK 5 Polyclonal Antibody



Western blot analysis of lysates from HeLa, HepG2, and HUVEC cells, using GRK5 Antibody. The lane on the right is blocked with the synthesized peptide.



Immunohistochemical analysis of paraffin-embedded human liver cancer. 1, Antibody was diluted at 1:200(4° overnight). 2, Tris-EDTA,pH9.0 was used for antigen retrieval. 3,Secondary antibody was diluted at 1:200(room temperature, 45min).