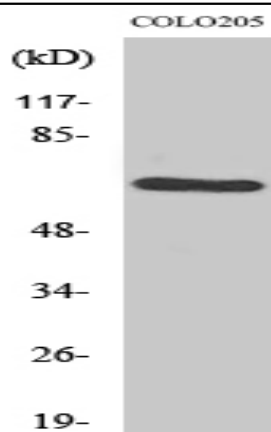


GRK 1 Polyclonal Antibody

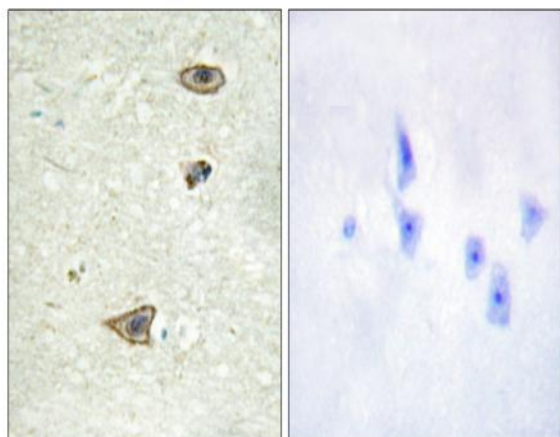
Catalog No :	YT2063
Reactivity :	Human;Mouse;Rat
Applications :	WB;IHC;IF;ELISA
Target :	GRK1
Fields :	>>Chemokine signaling pathway;>>Endocytosis;>>Phototransduction
Gene Name :	GRK1
Protein Name :	Rhodopsin kinase
Human Gene Id :	6011
Human Swiss Prot No :	Q15835
Mouse Swiss Prot No :	Q9WVL4
Rat Gene Id :	81760
Rat Swiss Prot No :	Q63651
Immunogen :	The antiserum was produced against synthesized peptide derived from human GRK1. AA range:6-55
Specificity :	GRK 1 Polyclonal Antibody detects endogenous levels of GRK 1 protein.
Formulation :	Liquid in PBS containing 50% glycerol, 0.5% BSA and 0.02% sodium azide.
Source :	Polyclonal, Rabbit,IgG
Dilution :	WB 1:500 - 1:2000. IHC 1:100 - 1:300. ELISA: 1:40000.. IF 1:50-200
Purification :	The antibody was affinity-purified from rabbit antiserum by affinity-chromatography using epitope-specific immunogen.

Concentration :	1 mg/ml
Storage Stability :	-15°C to -25°C/1 year(Do not lower than -25°C)
Observed Band :	63kD
Cell Pathway :	Chemokine;Endocytosis;
Background :	This gene encodes a member of the guanine nucleotide-binding protein (G protein)-coupled receptor kinase subfamily of the Ser/Thr protein kinase family. The protein phosphorylates rhodopsin and initiates its deactivation. Defects in GRK1 are known to cause Oguchi disease 2 (also known as stationary night blindness Oguchi type-2). [provided by RefSeq, Jul 2008],
Function :	<p>catalytic activity:ATP + [rhodopsin] = ADP + [rhodopsin] phosphate.,disease:Defects in GRK1 are a cause of congenital stationary night blindness Oguchi type (CSNBO) [MIM:258100]; also known as Oguchi disease. Congenital stationary night blindness is a non-progressive retinal disorder characterized by impaired night vision. CSNBO is an autosomal recessive form associated with fundus discoloration and abnormally slow dark adaptation.,function:Phosphorylates rhodopsin thereby initiating its deactivation.,online information:Retina International's Scientific Newsletter,PTM:Autophosphorylated.,PTM:Farnesylation is required for full activity.,similarity:Belongs to the protein kinase superfamily. AGC Ser/Thr protein kinase family. GPRK subfamily.,similarity:Contains 1 AGC-kinase C-terminal domain.,similarity:Contains 1 protein kinase domain.,similarity:Contains 1 RGS domain.,tissue specificity:R</p>
Subcellular Location :	Membrane ; Lipid-anchor . Cell projection, cilium, photoreceptor outer segment . Subcellular location is not affected by light or dark conditions. .
Expression :	Retinal-specific. Expressed in rods and cones cells.
Sort :	7118
No4 :	1
Host :	Rabbit
Modifications :	Unmodified

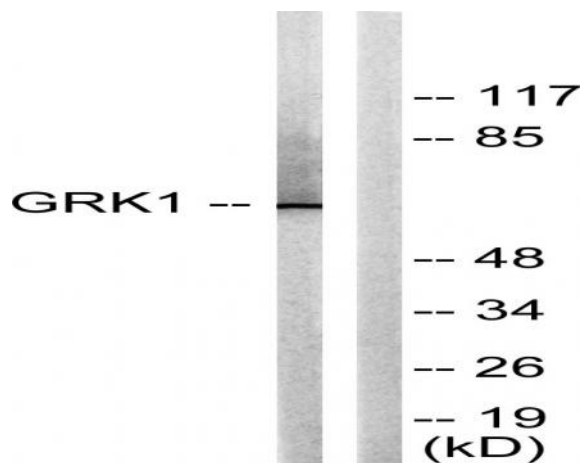
Products Images



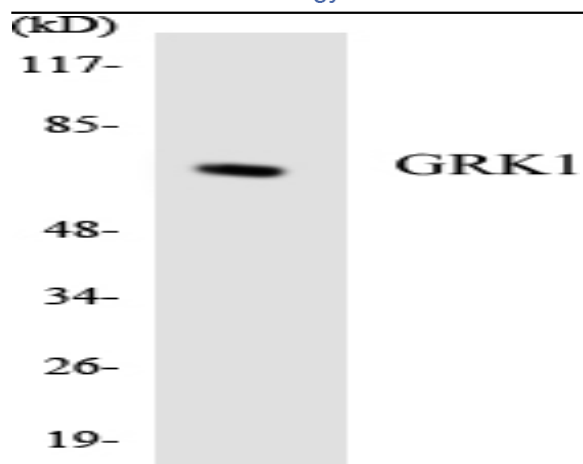
Western Blot analysis of various cells using GRK 1 Polyclonal Antibody



Immunohistochemistry analysis of paraffin-embedded human brain tissue, using GRK1 Antibody. The picture on the right is blocked with the synthesized peptide.



Western blot analysis of lysates from COLO205 cells, using GRK1 Antibody. The lane on the right is blocked with the synthesized peptide.



Western blot analysis of the lysates from Jurkat cells using GRK1 antibody.