

## GRIN1 Polyclonal Antibody

<b>Catalog No :</b>	YT2059
<b>Reactivity :</b>	Human;Mouse
<b>Applications :</b>	WB;ELISA
<b>Target :</b>	GRIN1
<b>Gene Name :</b>	GPRIN1
<b>Protein Name :</b>	G protein-regulated inducer of neurite outgrowth 1
<b>Human Gene Id :</b>	114787
<b>Human Swiss Prot No :</b>	Q7Z2K8
<b>Mouse Swiss Prot No :</b>	Q3UNH4
<b>Immunogen :</b>	The antiserum was produced against synthesized peptide derived from human GPRIN1. AA range:231-280
<b>Specificity :</b>	GRIN1 Polyclonal Antibody detects endogenous levels of GRIN1 protein.
<b>Formulation :</b>	Liquid in PBS containing 50% glycerol, 0.5% BSA and 0.02% sodium azide.
<b>Source :</b>	Polyclonal, Rabbit,IgG
<b>Dilution :</b>	WB 1:500 - 1:2000. ELISA: 1:40000. Not yet tested in other applications.
<b>Purification :</b>	The antibody was affinity-purified from rabbit antiserum by affinity-chromatography using epitope-specific immunogen.
<b>Concentration :</b>	1 mg/ml
<b>Storage Stability :</b>	-15°C to -25°C/1 year(Do not lower than -25°C)
<b>Observed Band :</b>	102kD

**Background :** function:May be involved in neurite outgrowth.,PTM:Palmitoylation on Cys-999 and/or Cys-1000 is required for membrane targeting.,subcellular location:Highly enriched in growth cone.,subunit:Interacts with activated forms of GNAI1, GNAO1 and GNAZ.,tissue specificity:Widely expressed in the central nervous system, with highest levels in spinal cord.,

**Function :** function:May be involved in neurite outgrowth.,PTM:Palmitoylation on Cys-999 and/or Cys-1000 is required for membrane targeting.,subcellular location:Highly enriched in growth cone.,subunit:Interacts with activated forms of GNAI1, GNAO1 and GNAZ.,tissue specificity:Widely expressed in the central nervous system, with highest levels in spinal cord.,

**Subcellular Location :** Cell membrane ; Lipid-anchor . Cell projection, growth cone . Highly enriched in growth cone. .

**Expression :** Widely expressed in the central nervous system, with highest levels in spinal cord.

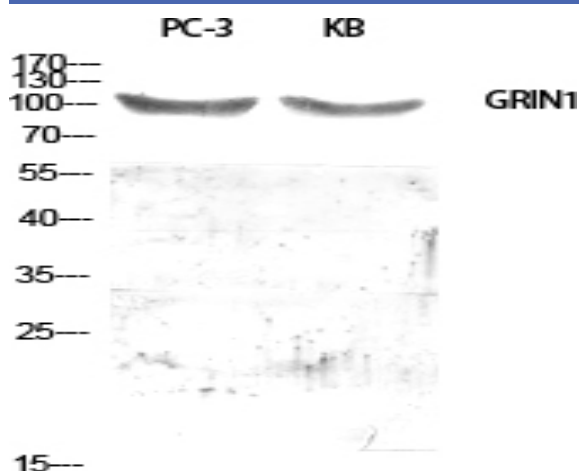
**Sort :** 7111

**No4 :** 1

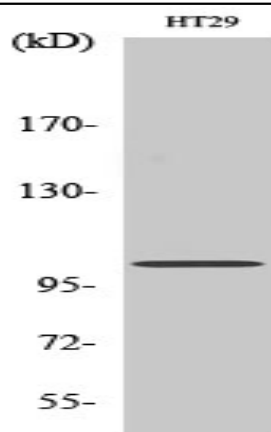
**Host :** Rabbit

**Modifications :** Unmodified

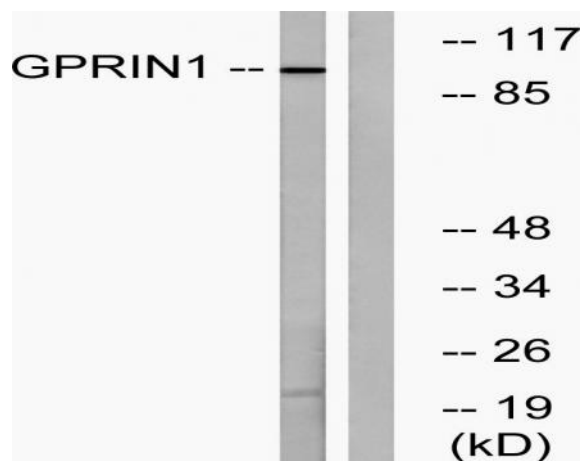
## Products Images



Western Blot analysis of various cells using GRIN1 Polyclonal Antibody diluted at 1:500



Western Blot analysis of HT29 cells using GRIN1 Polyclonal Antibody diluted at 1:500



Western blot analysis of lysates from HT-29 cells, using GPRIN1 Antibody. The lane on the right is blocked with the synthesized peptide.