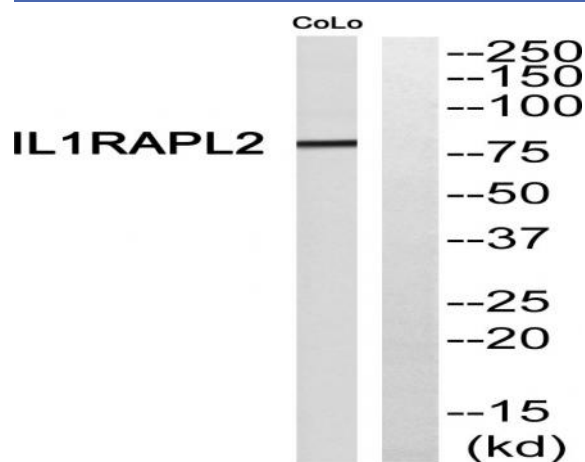


## IL-1R9 Polyclonal Antibody

<b>Catalog No :</b>	YT2320
<b>Reactivity :</b>	Human;Mouse
<b>Applications :</b>	WB;ELISA
<b>Target :</b>	IL-1R9
<b>Gene Name :</b>	IL1RAPL2
<b>Protein Name :</b>	X-linked interleukin-1 receptor accessory protein-like 2
<b>Human Gene Id :</b>	26280
<b>Human Swiss Prot No :</b>	Q9NP60
<b>Mouse Gene Id :</b>	60367
<b>Mouse Swiss Prot No :</b>	Q9ERS6
<b>Immunogen :</b>	The antiserum was produced against synthesized peptide derived from human IL1RAPL2. AA range:141-190
<b>Specificity :</b>	IL-1R9 Polyclonal Antibody detects endogenous levels of IL-1R9 protein.
<b>Formulation :</b>	Liquid in PBS containing 50% glycerol, 0.5% BSA and 0.02% sodium azide.
<b>Source :</b>	Polyclonal, Rabbit,IgG
<b>Dilution :</b>	WB 1:500 - 1:2000. ELISA: 1:20000. Not yet tested in other applications.
<b>Purification :</b>	The antibody was affinity-purified from rabbit antiserum by affinity-chromatography using epitope-specific immunogen.
<b>Concentration :</b>	1 mg/ml
<b>Storage Stability :</b>	-15°C to -25°C/1 year(Do not lower than -25°C)

**Observed Band :** 79kD**Background :** The protein encoded by this gene is a member of the interleukin 1 receptor family. This protein is similar to the interleukin 1 accessory proteins, and is most closely related to interleukin 1 receptor accessory protein-like 1 (IL1RAPL1). This gene and IL1RAPL1 are located at a region on chromosome X that is associated with X-linked non-syndromic mental retardation. [provided by RefSeq, Jul 2008],**Function :** similarity:Belongs to the interleukin-1 receptor family.,similarity:Contains 1 TIR domain.,similarity:Contains 3 Ig-like C2-type (immunoglobulin-like) domains.,tissue specificity:Detected at low levels in fetal and adult brain, in particular in the frontal lobe, temporal lobe and cerebellum. Detected at very low levels in skin, liver, fetal ovary and in placenta.,**Subcellular Location :** Membrane; Single-pass type I membrane protein.**Expression :** Detected at low levels in fetal and adult brain, in particular in the frontal lobe, temporal lobe and cerebellum. Detected at very low levels in skin, liver, fetal ovary and in placenta.**Sort :** 8470**No4 :** 1**Host :** Rabbit**Modifications :** Unmodified

## Products Images



Western blot analysis of IL1RAPL2 Antibody. The lane on the right is blocked with the IL1RAPL2 peptide.