

IL-11R α Polyclonal Antibody

Catalog No :	YT2310
Reactivity :	Human;Rat;Mouse;
Applications :	WB;ELISA
Target :	IL-11R α
Fields :	>>Cytokine-cytokine receptor interaction;>>JAK-STAT signaling pathway;>>Hematopoietic cell lineage
Gene Name :	IL11RA
Protein Name :	Interleukin-11 receptor subunit alpha
Human Gene Id :	3590
Human Swiss Prot No :	Q14626
Mouse Swiss Prot No :	Q64385
Immunogen :	Synthesized peptide derived from IL-11R α . at AA range: 300-380
Specificity :	IL-11R α Polyclonal Antibody detects endogenous levels of IL-11R α protein.
Formulation :	Liquid in PBS containing 50% glycerol, 0.5% BSA and 0.02% sodium azide.
Source :	Polyclonal, Rabbit,IgG
Dilution :	WB 1:500 - 1:2000. ELISA: 1:20000. Not yet tested in other applications.
Purification :	The antibody was affinity-purified from rabbit antiserum by affinity-chromatography using epitope-specific immunogen.
Concentration :	1 mg/ml
Storage Stability :	-15°C to -25°C/1 year(Do not lower than -25°C)

Observed Band : 45kD

Cell Pathway : Cytokine-cytokine receptor interaction;Jak_STAT;Hematopoietic cell lineage;

Background : Interleukin 11 is a stromal cell-derived cytokine that belongs to a family of pleiotropic and redundant cytokines that use the gp130 transducing subunit in their high affinity receptors. This gene encodes the IL-11 receptor, which is a member of the hematopoietic cytokine receptor family. This particular receptor is very similar to ciliary neurotrophic factor, since both contain an extracellular region with a 2-domain structure composed of an immunoglobulin-like domain and a cytokine receptor-like domain. Multiple alternatively spliced transcript variants have been found for this gene. [provided by RefSeq, Jun 2012],

Function : disease:Increased levels of IL11R are found in prostate carcinoma.,function:Receptor for interleukin-11. The receptor systems for IL6, LIF, OSM, CNTF, IL11 and CT1 can utilize IL6ST for initiating signal transmission. The IL11/IL11RA/IL6ST complex may be involved in the control of proliferation and/or differentiation of skeletogenic progenitor or other mesenchymal cells.,similarity:Belongs to the type I cytokine receptor family. Type 3 subfamily.,similarity:Contains 1 Ig-like C2-type (immunoglobulin-like) domain.,similarity:Contains 2 fibronectin type-III domains.,subunit:On ligand binding, forms a multimer complex with IL6ST/gp130.,tissue specificity:Expressed in a number of cell lines, including the myelogenous leukemia cell line K562, the megakaryocytic leukemia cell line Mo7E, the erythroleukemia cell line TF1, and the osteosarcoma cell lines, MG-63 and Saos-2. Also expressed in norm

Subcellular Location : [Interleukin-11 receptor subunit alpha]: Membrane ; Single-pass type I membrane protein .; [Soluble interleukin-11 receptor subunit alpha]: Secreted .; [Isoform HCR2]: Secreted .

Expression : Expressed in a number of cell lines, including the myelogenous leukemia cell line K-562, the megakaryocytic leukemia cell line M-07e, the erythroleukemia cell line TF-1, and the osteosarcoma cell lines, MG-63 and SaOS-2 (PubMed:7670098). Also expressed in normal and malignant prostate epithelial cell lines. Expression levels are increased in prostate carcinoma.

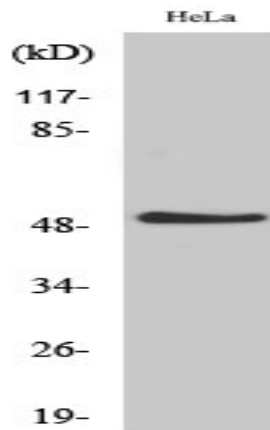
Sort : 8421

No4 : 1

Host : Rabbit

Modifications : Unmodified

Products Images



Western Blot analysis of various cells using IL-11Ra Polyclonal Antibody