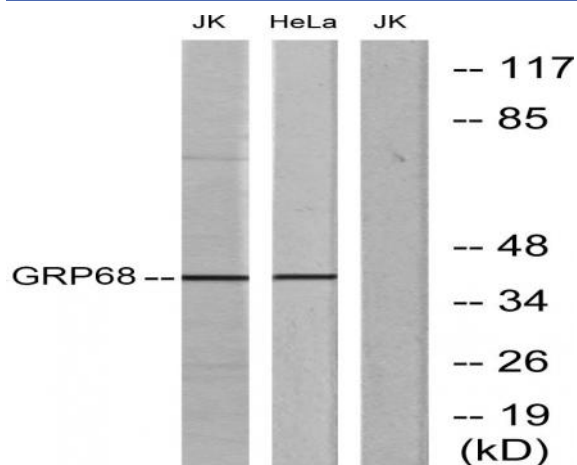


## GPR68 Polyclonal Antibody

<b>Catalog No :</b>	YT2029
<b>Reactivity :</b>	Human;Mouse
<b>Applications :</b>	WB;IF;ELISA
<b>Target :</b>	GPR68
<b>Gene Name :</b>	GPR68
<b>Protein Name :</b>	Ovarian cancer G-protein coupled receptor 1
<b>Human Gene Id :</b>	8111
<b>Human Swiss Prot No :</b>	Q15743
<b>Mouse Gene Id :</b>	238377
<b>Mouse Swiss Prot No :</b>	Q8BFQ3
<b>Immunogen :</b>	The antiserum was produced against synthesized peptide derived from human SPR1. AA range:281-330
<b>Specificity :</b>	GPR68 Polyclonal Antibody detects endogenous levels of GPR68 protein.
<b>Formulation :</b>	Liquid in PBS containing 50% glycerol, 0.5% BSA and 0.02% sodium azide.
<b>Source :</b>	Polyclonal, Rabbit,IgG
<b>Dilution :</b>	WB 1:500 - 1:2000. IF 1:200 - 1:1000. ELISA: 1:5000. Not yet tested in other applications.
<b>Purification :</b>	The antibody was affinity-purified from rabbit antiserum by affinity-chromatography using epitope-specific immunogen.
<b>Concentration :</b>	1 mg/ml
<b>Storage Stability :</b>	-15°C to -25°C/1 year(Do not lower than -25°C)

<b>Observed Band :</b>	41kD
<b>Background :</b>	similarity:Belongs to the G-protein coupled receptor 1 family.,
<b>Function :</b>	similarity:Belongs to the G-protein coupled receptor 1 family.,
<b>Subcellular Location :</b>	Cell membrane; Multi-pass membrane protein.
<b>Expression :</b>	Found at low level in a wide range of tissues, but significantly expressed in lung, kidney, bone and nervous system.
<b>Sort :</b>	7058
<b>No4 :</b>	1
<b>Host :</b>	Rabbit
<b>Modifications :</b>	Unmodified

## Products Images



Western blot analysis of lysates from Jurkat and HeLa cells, using SPR1 Antibody. The lane on the right is blocked with the synthesized peptide.