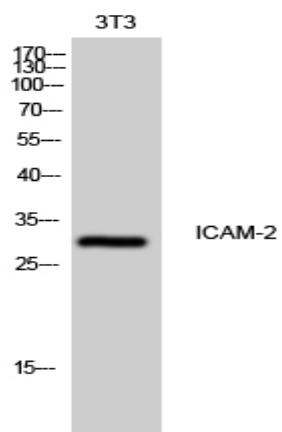


ICAM-2 Polyclonal Antibody

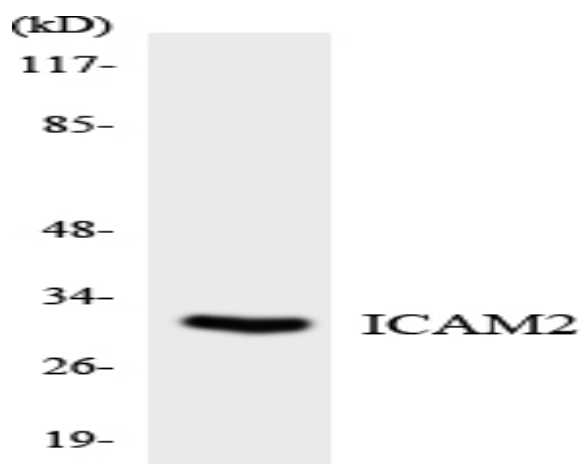
Catalog No :	YT2270
Reactivity :	Human;Rat;Mouse;
Applications :	WB;ELISA
Target :	ICAM-2
Fields :	>>Cell adhesion molecules;>>Natural killer cell mediated cytotoxicity
Gene Name :	ICAM2
Protein Name :	Intercellular adhesion molecule 2
Human Gene Id :	3384
Human Swiss Prot No :	P13598
Mouse Swiss Prot No :	P35330
Immunogen :	The antiserum was produced against synthesized peptide derived from human ICAM2. AA range:151-200
Specificity :	ICAM-2 Polyclonal Antibody detects endogenous levels of ICAM-2 protein.
Formulation :	Liquid in PBS containing 50% glycerol, 0.5% BSA and 0.02% sodium azide.
Source :	Polyclonal, Rabbit,IgG
Dilution :	WB 1:500 - 1:2000. ELISA: 1:10000. Not yet tested in other applications.
Purification :	The antibody was affinity-purified from rabbit antiserum by affinity-chromatography using epitope-specific immunogen.
Concentration :	1 mg/ml
Storage Stability :	-15°C to -25°C/1 year(Do not lower than -25°C)

Observed Band :	30kD
Cell Pathway :	Cell adhesion molecules (CAMs);Natural killer cell mediated cytotoxicity;
Background :	<p>The protein encoded by this gene is a member of the intercellular adhesion molecule (ICAM) family. All ICAM proteins are type I transmembrane glycoproteins, contain 2-9 immunoglobulin-like C2-type domains, and bind to the leukocyte adhesion LFA-1 protein. This protein may play a role in lymphocyte recirculation by blocking LFA-1-dependent cell adhesion. It mediates adhesive interactions important for antigen-specific immune response, NK-cell mediated clearance, lymphocyte recirculation, and other cellular interactions important for immune response and surveillance. Several transcript variants encoding the same protein have been found for this gene. [provided by RefSeq, Jul 2008],</p>
Function :	<p>function:ICAM proteins are ligands for the leukocyte adhesion protein LFA-1 (integrin alpha-L/beta-2). ICAM2 may play a role in lymphocyte recirculation by blocking LFA-1-dependent cell adhesion. It mediates adhesive interactions important for antigen-specific immune response, NK-cell mediated clearance, lymphocyte recirculation, and other cellular interactions important for immune response and surveillance.,online information:ICAM-2,similarity:Belongs to the immunoglobulin superfamily. ICAM family.,similarity:Contains 2 Ig-like C2-type (immunoglobulin-like) domains.,</p>
Subcellular Location :	Membrane ; Single-pass type I membrane protein . Cell projection, microvillus . Co-localizes with RDX, EZR and MSN in microvilli. .
Expression :	Aorta endothelial cell,Blood,Brain,Endothelial cell,Plasma,Spleen,
Sort :	8302
No4 :	1
Host :	Rabbit
Modifications :	Unmodified

Products Images



Western Blot analysis of 3T3 cells using ICAM-2 Polyclonal Antibody



Western blot analysis of the lysates from HT-29 cells using ICAM2 antibody.