

## HXK III Polyclonal Antibody

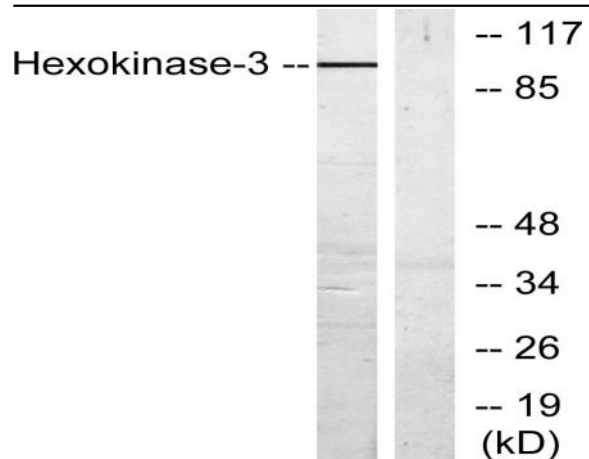
<b>Catalog No :</b>	YT2266
<b>Reactivity :</b>	Human;Rat;Mouse;
<b>Applications :</b>	WB;IHC;IF;ELISA
<b>Target :</b>	HXK III
<b>Fields :</b>	>>Glycolysis / Gluconeogenesis;>>Fructose and mannose metabolism;>>Galactose metabolism;>>Starch and sucrose metabolism;>>Amino sugar and nucleotide sugar metabolism;>>Neomycin, kanamycin and gentamicin biosynthesis;>>Metabolic pathways;>>Carbon metabolism;>>Biosynthesis of nucleotide sugars;>>HIF-1 signaling pathway;>>Insulin signaling pathway;>>Type II diabetes mellitus;>>Carbohydrate digestion and absorption;>>Shigellosis;>>Central carbon metabolism in cancer
<b>Gene Name :</b>	HK3
<b>Protein Name :</b>	Hexokinase-3
<b>Human Gene Id :</b>	3101
<b>Human Swiss Prot No :</b>	P52790
<b>Mouse Swiss Prot No :</b>	Q3TRM8
<b>Immunogen :</b>	The antiserum was produced against synthesized peptide derived from human Hexokinase-3. AA range:811-860
<b>Specificity :</b>	HXK III Polyclonal Antibody detects endogenous levels of HXK III protein.
<b>Formulation :</b>	Liquid in PBS containing 50% glycerol, 0.5% BSA and 0.02% sodium azide.
<b>Source :</b>	Polyclonal, Rabbit,IgG
<b>Dilution :</b>	WB 1:500 - 1:2000. IHC 1:100 - 1:300. ELISA: 1:5000.. IF 1:50-200
<b>Purification :</b>	The antibody was affinity-purified from rabbit antiserum by affinity-chromatography using epitope-specific immunogen.

---

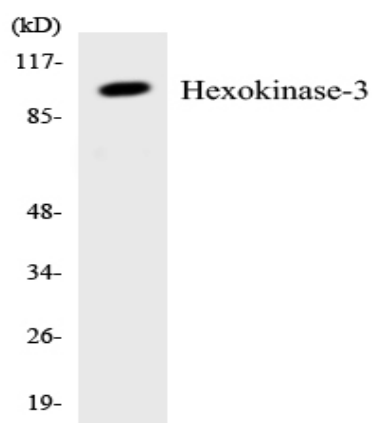
<b>Concentration :</b>	1 mg/ml
<b>Storage Stability :</b>	-15°C to -25°C/1 year(Do not lower than -25°C)
<b>Observed Band :</b>	99kD
<b>Cell Pathway :</b>	Glycolysis / Gluconeogenesis;Fructose and mannose metabolism;Galactose metabolism;Starch and sucrose metabolism;Amino sugar and nucleotide sugar metabolism;Insulin_Receptor;Type II diabetes mellitus;
<b>Background :</b>	Hexokinases phosphorylate glucose to produce glucose-6-phosphate, the first step in most glucose metabolism pathways. This gene encodes hexokinase 3. Similar to hexokinases 1 and 2, this allosteric enzyme is inhibited by its product glucose-6-phosphate. [provided by RefSeq, Apr 2009],
<b>Function :</b>	catalytic activity:ATP + D-hexose = ADP + D-hexose 6-phosphate.,domain:The N- and C-terminal halves of this hexokinase show extensive sequence similarity to each other. The catalytic activity is associated with the C-terminus while regulatory function is associated with the N-terminus.,enzyme regulation:Hexokinase is an allosteric enzyme inhibited by its product Glc-6-P.,miscellaneous:In vertebrates there are four major glucose-phosphorylating isoenzymes, designated hexokinase I, II, III and IV (glucokinase).,online information:Hexokinase entry,pathway:Carbohydrate metabolism; hexose metabolism.,similarity:Belongs to the hexokinase family.,subunit:Monomer.,
<b>Subcellular Location :</b>	cell,mitochondrion,cytosol,
<b>Expression :</b>	Blood,Liver,Spleen,
<b>Tag :</b>	orthogonal
<b>Sort :</b>	8290
<b>No4 :</b>	1
<b>Host :</b>	Rabbit
<b>Modifications :</b>	Unmodified

---

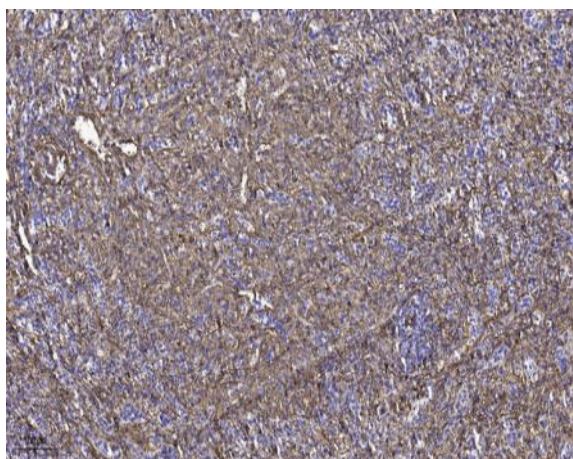
## Products Images



Western blot analysis of lysates from Jurkat cells, treated with insulin 0.01U/ml 15', using Hexokinase-3 Antibody. The lane on the right is blocked with the synthesized peptide.



Western blot analysis of the lysates from COLO205 cells using Hexokinase-3 antibody.



Immunohistochemical analysis of paraffin-embedded human spleen tissue. 1, primary Antibody was diluted at 1:200(4° overnight). 2, Sodium citrate pH 6.0 was used for antigen retrieval(>98 °C,20min). 3, Secondary antibody was diluted at 1:200