

## HSP10 Polyclonal Antibody

<b>Catalog No :</b>	YT2248
<b>Reactivity :</b>	Human;Mouse;Rat
<b>Applications :</b>	WB;IHC;IF;ELISA
<b>Target :</b>	HSP10
<b>Gene Name :</b>	HSPE1
<b>Protein Name :</b>	10 kDa heat shock protein mitochondrial
<b>Human Gene Id :</b>	3336
<b>Human Swiss Prot No :</b>	P61604
<b>Mouse Gene Id :</b>	15528
<b>Mouse Swiss Prot No :</b>	Q64433
<b>Rat Swiss Prot No :</b>	P26772
<b>Immunogen :</b>	The antiserum was produced against synthesized peptide derived from human HSP10. AA range:51-100
<b>Specificity :</b>	HSP10 Polyclonal Antibody detects endogenous levels of HSP10 protein.
<b>Formulation :</b>	Liquid in PBS containing 50% glycerol, 0.5% BSA and 0.02% sodium azide.
<b>Source :</b>	Polyclonal, Rabbit,IgG
<b>Dilution :</b>	WB 1:500 - 1:2000. IHC 1:100 - 1:300. IF 1:200 - 1:1000. ELISA: 1:10000. Not yet tested in other applications.
<b>Purification :</b>	The antibody was affinity-purified from rabbit antiserum by affinity-chromatography using epitope-specific immunogen.
<b>Concentration :</b>	1 mg/ml

**Storage Stability :** -15°C to -25°C/1 year(Do not lower than -25°C)

**Observed Band :** 10kD

**Background :** This gene encodes a major heat shock protein which functions as a chaperonin. Its structure consists of a heptameric ring which binds to another heat shock protein in order to form a symmetric, functional heterodimer which enhances protein folding in an ATP-dependent manner. This gene and its co-chaperonin, HSPD1, are arranged in a head-to-head orientation on chromosome 2. Naturally occurring read-through transcription occurs between this locus and the neighboring locus MOBKL3.[provided by RefSeq, Feb 2011],

**Function :** function:Eukaryotic CPN10 homolog which is essential for mitochondrial protein biogenesis, together with CPN60. Binds to CPN60 in the presence of Mg-ATP and suppresses the ATPase activity of the latter.,induction:By stress.,mass spectrometry: PubMed:7912672,similarity:Belongs to the groES chaperonin family.,subunit:Homohexamer.,

**Subcellular Location :** Mitochondrion matrix.

**Expression :** B-cell lymphoma,Uterus,

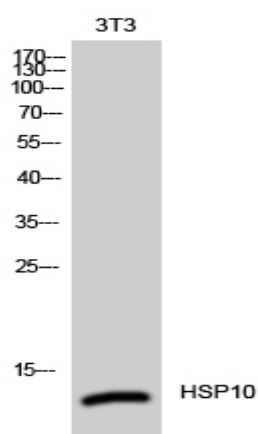
**Sort :** 7885

**No4 :** 1

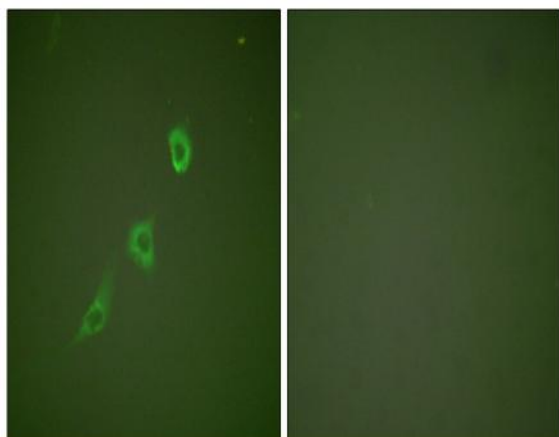
**Host :** Rabbit

**Modifications :** Unmodified

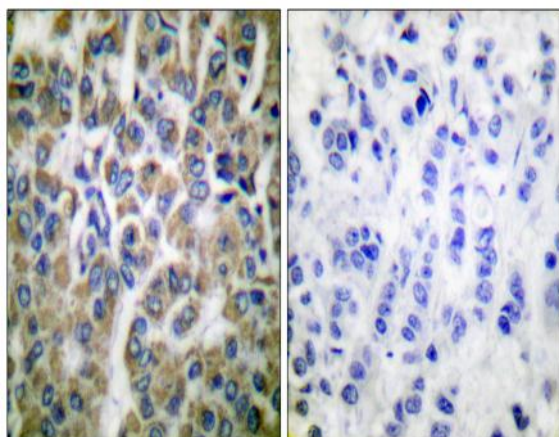
## Products Images



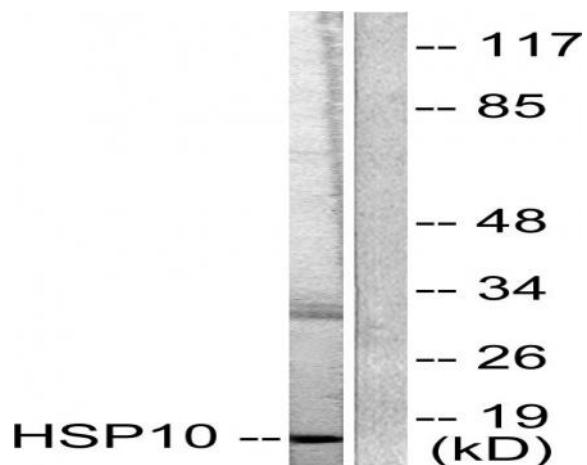
Western Blot analysis of 3T3 cells using HSP10 Polyclonal Antibody



Immunofluorescence analysis of NIH/3T3 cells, using HSP10 Antibody. The picture on the right is blocked with the synthesized peptide.



Immunohistochemistry analysis of paraffin-embedded human breast carcinoma tissue, using HSP10 Antibody. The picture on the right is blocked with the synthesized peptide.



Western blot analysis of lysates from NIH/3T3 cells, using HSP10 Antibody. The lane on the right is blocked with the synthesized peptide.