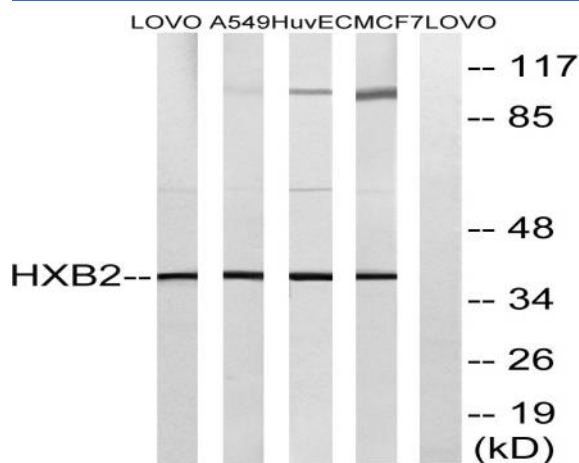


HoxB2 Polyclonal Antibody

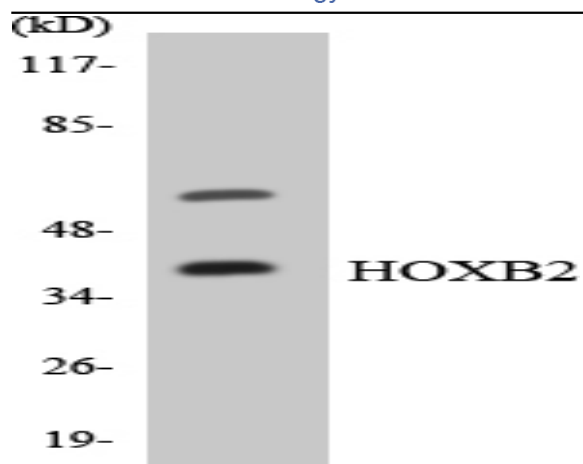
Catalog No :	YT2214
Reactivity :	Human;Rat;Mouse;
Applications :	WB;ELISA
Target :	HoxB2
Gene Name :	HOXB2
Protein Name :	Homeobox protein Hox-B2
Human Gene Id :	3212
Human Swiss Prot No :	P14652
Mouse Swiss Prot No :	P0C1T1
Immunogen :	The antiserum was produced against synthesized peptide derived from human HOXB2. AA range:41-90
Specificity :	HoxB2 Polyclonal Antibody detects endogenous levels of HoxB2 protein.
Formulation :	Liquid in PBS containing 50% glycerol, 0.5% BSA and 0.02% sodium azide.
Source :	Polyclonal, Rabbit,IgG
Dilution :	WB 1:500 - 1:2000. ELISA: 1:20000. Not yet tested in other applications.
Purification :	The antibody was affinity-purified from rabbit antiserum by affinity-chromatography using epitope-specific immunogen.
Concentration :	1 mg/ml
Storage Stability :	-15°C to -25°C/1 year(Do not lower than -25°C)
Observed Band :	38kD

Background :	This gene is a member of the Antp homeobox family and encodes a nuclear protein with a homeobox DNA-binding domain. It is included in a cluster of homeobox B genes located on chromosome 17. The encoded protein functions as a sequence-specific transcription factor that is involved in development. Increased expression of this gene is associated with pancreatic cancer. [provided by RefSeq, Jul 2008],
Function :	developmental stage:Expressed in whole embryos and fetuses at 5-9 weeks from conception.,function:Sequence-specific transcription factor which is part of a developmental regulatory system that provides cells with specific positional identities on the anterior-posterior axis.,similarity:Belongs to the Antp homeobox family. Proboscipedia subfamily.,similarity:Contains 1 homeobox DNA-binding domain.,
Subcellular Location :	Nucleus.
Expression :	Leukemia,Placenta,
Sort :	7745
No4 :	1
Host :	Rabbit
Modifications :	Unmodified

Products Images



Western blot analysis of lysates from MCF-7, HUVEC, A549, and LOVO cells, using HOXB2 Antibody. The lane on the right is blocked with the synthesized peptide.



Western blot analysis of the lysates from HUVEC cells using HOXB2 antibody.