

Glut3 Polyclonal Antibody

Catalog No :	YT1929
Reactivity :	Human;Rat;Mouse;
Applications :	WB;IHC;IF;ELISA
Target :	Glut3
Gene Name :	SLC2A3
Protein Name :	Solute carrier family 2 facilitated glucose transporter member 3
Human Gene Id :	6515
Human Swiss Prot No :	P11169
Mouse Swiss Prot No :	P32037
Immunogen :	The antiserum was produced against synthesized peptide derived from human GLUT3. AA range:447-496
Specificity :	Glut3 Polyclonal Antibody detects endogenous levels of Glut3 protein.
Formulation :	Liquid in PBS containing 50% glycerol, 0.5% BSA and 0.02% sodium azide.
Source :	Polyclonal, Rabbit,IgG
Dilution :	WB 1:500 - 1:2000. IHC 1:100 - 1:300. ELISA: 1:10000.. IF 1:50-200
Purification :	The antibody was affinity-purified from rabbit antiserum by affinity-chromatography using epitope-specific immunogen.
Concentration :	1 mg/ml
Storage Stability :	-15°C to -25°C/1 year(Do not lower than -25°C)
Observed Band :	55kD

Background : function:Facilitative glucose transporter. Probably a neuronal glucose transporter.,similarity:Belongs to the major facilitator superfamily. Sugar transporter (TC 2.A.1.1) family. Glucose transporter subfamily.,tissue specificity:Highly expressed in brain. Expressed in many tissues.,

Function : function:Facilitative glucose transporter. Probably a neuronal glucose transporter.,similarity:Belongs to the major facilitator superfamily. Sugar transporter (TC 2.A.1.1) family. Glucose transporter subfamily.,tissue specificity:Highly expressed in brain. Expressed in many tissues.,

Subcellular Location : Cell membrane ; Multi-pass membrane protein . Perikaryon . Cell projection . Localized to densely spaced patches along neuronal processes. .

Expression : Highly expressed in brain. Expressed in many tissues.

Tag : hot

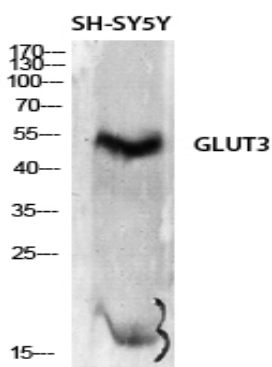
Sort : 6640

No4 : 1

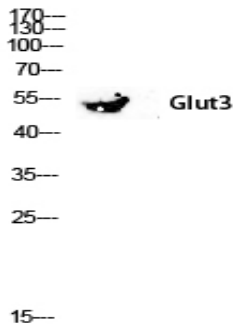
Host : Rabbit

Modifications : Unmodified

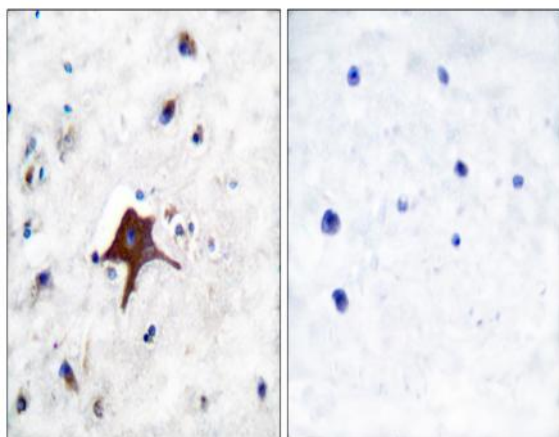
Products Images



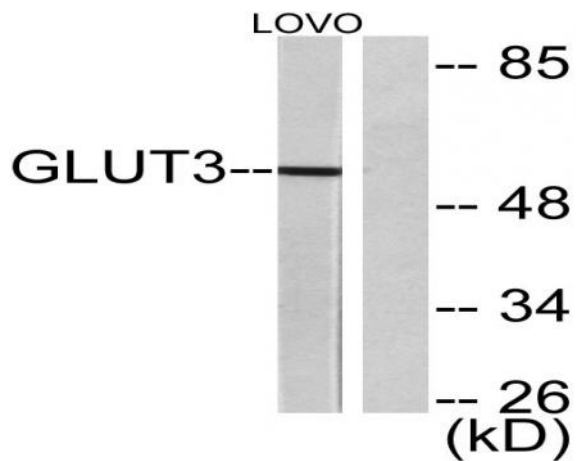
Western Blot analysis of SH-SY5Y cells using Glut3 Polyclonal Antibody diluted at 1:2000

MOUSE-BRAIN


Western blot analysis of Mouse-kidney lysis using Glut3 antibody. Antibody was diluted at 1:2000



Immunohistochemistry analysis of paraffin-embedded human brain tissue, using GLUT3 Antibody. The picture on the right is blocked with the synthesized peptide.



Western blot analysis of lysates from LOVO cells, using GLUT3 Antibody. The lane on the right is blocked with the synthesized peptide.