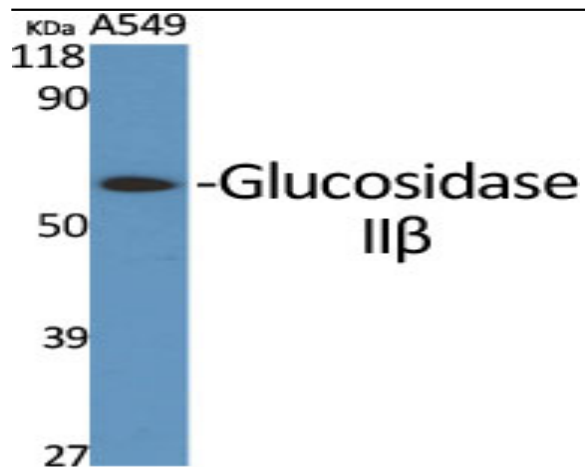


Glucosidase II β Polyclonal Antibody

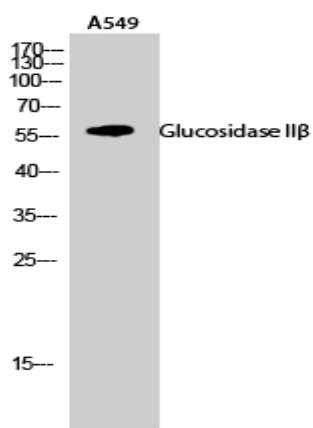
Catalog No :	YT1919
Reactivity :	Human;Mouse
Applications :	WB;IF;ELISA
Target :	Glucosidase II β
Fields :	>>Protein processing in endoplasmic reticulum
Gene Name :	PRKCSH
Protein Name :	Glucosidase 2 subunit beta
Human Gene Id :	5589
Human Swiss Prot No :	P14314
Mouse Gene Id :	19089
Mouse Swiss Prot No :	O08795
Immunogen :	The antiserum was produced against synthesized peptide derived from human GLU2B. AA range:81-130
Specificity :	Glucosidase II β Polyclonal Antibody detects endogenous levels of Glucosidase II β protein.
Formulation :	Liquid in PBS containing 50% glycerol, 0.5% BSA and 0.02% sodium azide.
Source :	Polyclonal, Rabbit,IgG
Dilution :	WB 1:500 - 1:2000. IF 1:200 - 1:1000. ELISA: 1:10000. Not yet tested in other applications.
Purification :	The antibody was affinity-purified from rabbit antiserum by affinity-chromatography using epitope-specific immunogen.

Concentration :	1 mg/ml
Storage Stability :	-15°C to -25°C/1 year(Do not lower than -25°C)
Observed Band :	59kD
Background :	This gene encodes the beta-subunit of glucosidase II, an N-linked glycan-processing enzyme in the endoplasmic reticulum. The encoded protein is an acidic phosphoprotein known to be a substrate for protein kinase C. Mutations in this gene have been associated with the autosomal dominant polycystic liver disease. Alternative splicing results in multiple transcript variants. [provided by RefSeq, Jan 2014],
Function :	disease:Defects in PRKCSH are a cause of polycystic liver disease (PCLD) [MIM:174050]. PCLD is an autosomal dominant disorder and is characterized by the presence of multiple liver cysts of biliary epithelial origin. PCLD is a distinct clinical and genetic entity that can occur independently from autosomal dominant polycystic kidney disease (ADPKD) [MIM:173900], which in a considerable but uncertain proportion of cases is associated with hepatic cysts.,function:Regulatory subunit of glucosidase II.,pathway:Glycan metabolism; N-glycan metabolism.,similarity:Contains 1 PRKCSH domain.,similarity:Contains 2 EF-hand domains.,subunit:Heterodimer of a catalytic alpha subunit (GANAB) and a beta subunit (PRKCSH). Binds glycosylated PTPRC.,
Subcellular Location :	Endoplasmic reticulum .
Expression :	Lung,Lymphocyte,Platelet,
Sort :	6617
No4 :	1
Host :	Rabbit
Modifications :	Unmodified

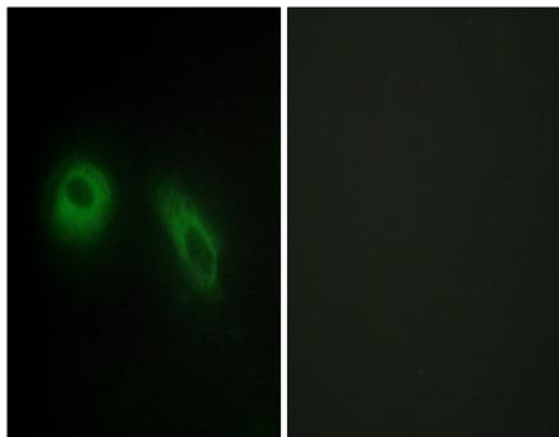
Products Images



Western Blot analysis of various cells using Glucosidase II β Polyclonal Antibody



Western Blot analysis of A549 cells using Glucosidase II β Polyclonal Antibody



Immunofluorescence analysis of HeLa cells, using GLU2B Antibody. The picture on the right is blocked with the synthesized peptide.

