

## HKR1 Polyclonal Antibody

<b>Catalog No :</b>	YT2176
<b>Reactivity :</b>	Human;Rat;Mouse;
<b>Applications :</b>	WB;IHC;IF;ELISA
<b>Target :</b>	HKR1
<b>Fields :</b>	>>Herpes simplex virus 1 infection
<b>Gene Name :</b>	HKR1
<b>Protein Name :</b>	Krueppel-related zinc finger protein 1
<b>Human Gene Id :</b>	284459
<b>Human Swiss Prot No :</b>	P10072
<b>Immunogen :</b>	The antiserum was produced against synthesized peptide derived from human HKR1. AA range:141-190
<b>Specificity :</b>	HKR1 Polyclonal Antibody detects endogenous levels of HKR1 protein.
<b>Formulation :</b>	Liquid in PBS containing 50% glycerol, 0.5% BSA and 0.02% sodium azide.
<b>Source :</b>	Polyclonal, Rabbit,IgG
<b>Dilution :</b>	WB 1:500 - 1:2000. IHC 1:100 - 1:300. IF 1:200 - 1:1000. ELISA: 1:5000. Not yet tested in other applications.
<b>Purification :</b>	The antibody was affinity-purified from rabbit antiserum by affinity-chromatography using epitope-specific immunogen.
<b>Concentration :</b>	1 mg/ml
<b>Storage Stability :</b>	-15°C to -25°C/1 year(Do not lower than -25°C)
<b>Observed Band :</b>	73kD

**Background :** function:May be involved in transcriptional regulation.,similarity:Belongs to the krueppel C2H2-type zinc-finger protein family.,similarity:Contains 1 KRAB domain.,similarity:Contains 13 C2H2-type zinc fingers.,

**Function :** function:May be involved in transcriptional regulation.,similarity:Belongs to the krueppel C2H2-type zinc-finger protein family.,similarity:Contains 1 KRAB domain.,similarity:Contains 13 C2H2-type zinc fingers.,

**Subcellular Location :** Nucleus .

**Expression :** Brain, Eye, Ovary,

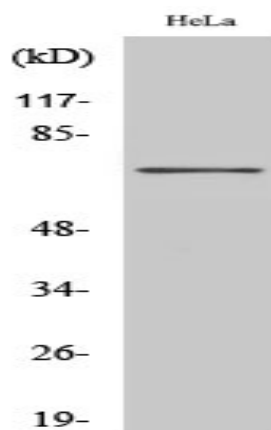
**Sort :** 7671

**No4 :** 1

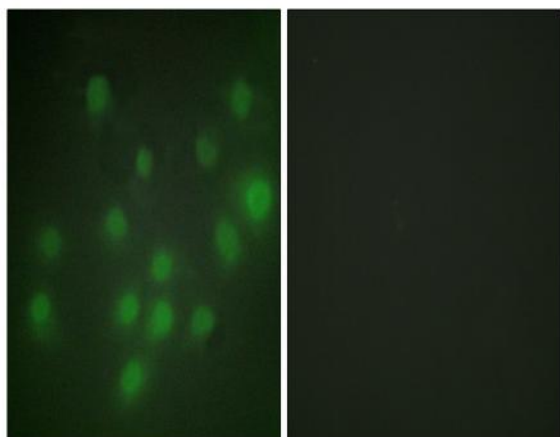
**Host :** Rabbit

**Modifications :** Unmodified

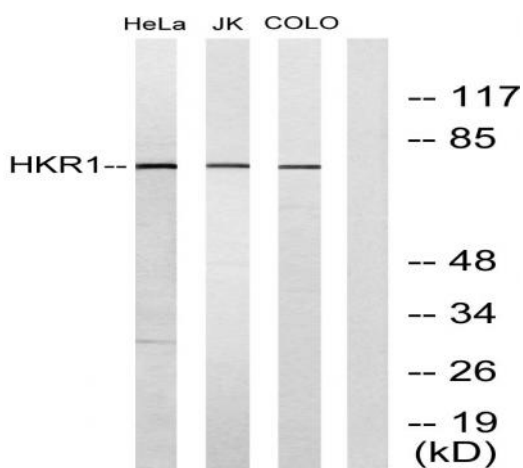
## Products Images



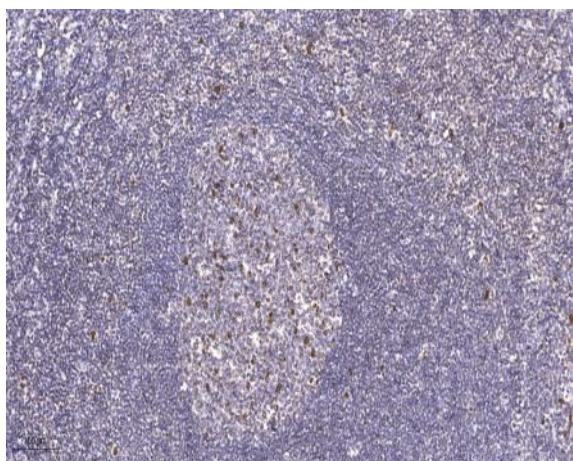
Western Blot analysis of various cells using HKR1 Polyclonal Antibody cells nucleus extracted by Minute TM Cytoplasmic and Nuclear Fractionation kit (SC-003, Inventbiotech, MN, USA).



Immunofluorescence analysis of HUVEC cells, using HKR1 Antibody. The picture on the right is blocked with the synthesized peptide.



Western blot analysis of lysates from HeLa, Jurkat, and COLO205 cells, using HKR1 Antibody. The lane on the right is blocked with the synthesized peptide.



Immunohistochemical analysis of paraffin-embedded human tonsil. 1, Antibody was diluted at 1:200(4° overnight). 2, Tris-EDTA,pH9.0 was used for antigen retrieval. 3,Secondary antibody was diluted at 1:200(room temperature, 45min).