

GCP4 Polyclonal Antibody

Catalog No :	YT1880
Reactivity :	Human;Mouse
Applications :	WB;IHC;IF;ELISA
Target :	GCP4
Gene Name :	TUBGCP4
Protein Name :	Gamma-tubulin complex component 4
Human Gene Id :	27229
Human Swiss Prot No :	Q9UGJ1
Mouse Gene Id :	51885
Mouse Swiss Prot No :	Q9D4F8
Immunogen :	The antiserum was produced against synthesized peptide derived from human TUBGCP4. AA range:191-240
Specificity :	GCP4 Polyclonal Antibody detects endogenous levels of GCP4 protein.
Formulation :	Liquid in PBS containing 50% glycerol, 0.5% BSA and 0.02% sodium azide.
Source :	Polyclonal, Rabbit,IgG
Dilution :	WB 1:500 - 1:2000. IHC 1:100 - 1:300. ELISA: 1:10000.. IF 1:50-200
Purification :	The antibody was affinity-purified from rabbit antiserum by affinity-chromatography using epitope-specific immunogen.
Concentration :	1 mg/ml
Storage Stability :	-15°C to -25°C/1 year(Do not lower than -25°C)

Observed Band : 76kD

Background : This gene encodes a component of the gamma-tubulin ring complex, which is required for microtubule nucleation. In mammalian cells, the protein localizes to centrosomes in association with gamma-tubulin. Crystal structure analysis revealed a structure composed of five helical bundles arranged around conserved hydrophobic cores. An exposed surface area located in the C-terminal domain is essential and sufficient for direct binding to gamma-tubulin. Mutations in this gene that alter microtubule organization are associated with microcephaly and chorioretinopathy. Alternative splicing results in multiple transcript variants. [provided by RefSeq, May 2015],

Function : function:Gamma-tubulin complex is necessary for microtubule nucleation at the centrosome.,similarity:Belongs to the GCP family.,subunit:Gamma-tubulin complex is composed of gamma-tubulin, GCP2, GCP3, GCP4, GCP5 and GCP6.,tissue specificity:Ubiquitously expressed.,

Subcellular Location : Cytoplasm, cytoskeleton, microtubule organizing center, centrosome.

Expression : Ubiquitously expressed.

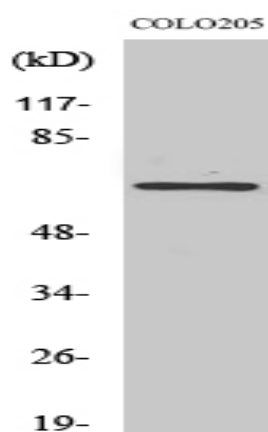
Sort : 6517

No4 : 1

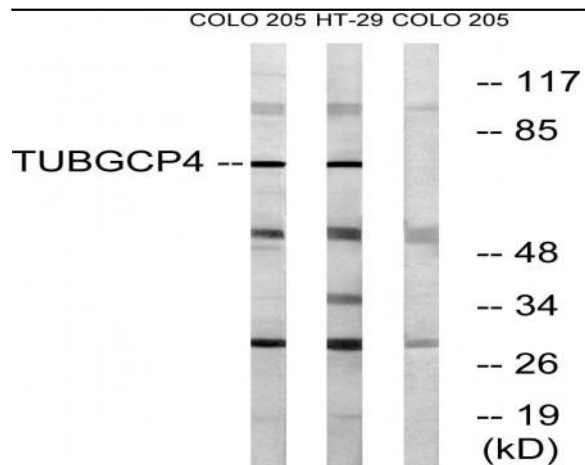
Host : Rabbit

Modifications : Unmodified

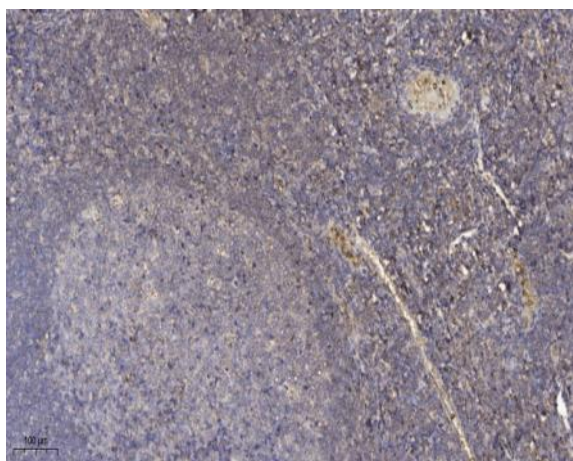
Products Images



Western Blot analysis of various cells using GCP4 Polyclonal Antibody



Western blot analysis of lysates from COLO and HT-29 cells, using TUBGCP4 Antibody. The lane on the right is blocked with the synthesized peptide.



Immunohistochemical analysis of paraffin-embedded human tonsil. 1, Antibody was diluted at 1:200(4° overnight). 2, Tris-EDTA,pH9.0 was used for antigen retrieval. 3,Secondary antibody was diluted at 1:200(room temperature, 30min).