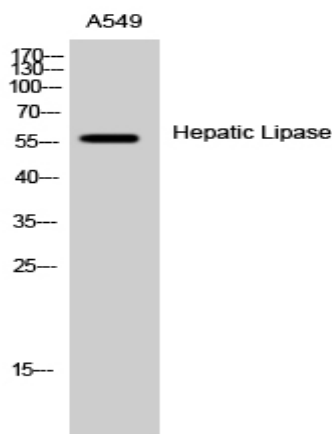


Hepatic Lipase Polyclonal Antibody

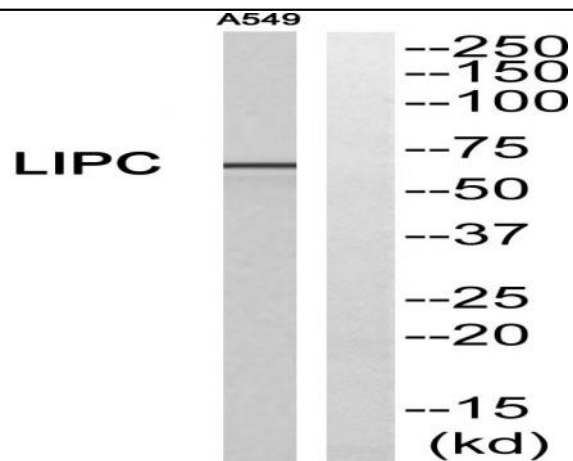
Catalog No :	YT2126
Reactivity :	Human;Rat;Mouse;
Applications :	WB;IHC;IF;ELISA
Target :	Hepatic Lipase
Fields :	>>Glycerolipid metabolism;>>Metabolic pathways;>>Cholesterol metabolism
Gene Name :	LIPC
Protein Name :	Hepatic triacylglycerol lipase
Human Gene Id :	3990
Human Swiss Prot No :	P11150
Mouse Swiss Prot No :	P27656
Immunogen :	The antiserum was produced against synthesized peptide derived from human LIPC. AA range:301-350
Specificity :	Hepatic Lipase Polyclonal Antibody detects endogenous levels of Hepatic Lipase protein.
Formulation :	Liquid in PBS containing 50% glycerol, 0.5% BSA and 0.02% sodium azide.
Source :	Polyclonal, Rabbit,IgG
Dilution :	WB 1:500 - 1:2000. IHC 1:100 - 1:300. ELISA: 1:10000.. IF 1:50-200
Purification :	The antibody was affinity-purified from rabbit antiserum by affinity-chromatography using epitope-specific immunogen.
Concentration :	1 mg/ml
Storage Stability :	-15°C to -25°C/1 year(Do not lower than -25°C)

Observed Band :	56kD
Cell Pathway :	Glycerolipid metabolism;
Background :	LIPC encodes hepatic triglyceride lipase, which is expressed in liver. LIPC has the dual functions of triglyceride hydrolase and ligand/bridging factor for receptor-mediated lipoprotein uptake. [provided by RefSeq, Jul 2008],
Function :	catalytic activity:Triacylglycerol + H(2)O = diacylglycerol + a carboxylate.,disease:Defects in LIPC are the cause of hepatic lipase deficiency (HL deficiency) [MIM:151670].,function:Hepatic lipase has the capacity to catalyze hydrolysis of phospholipids, mono-, di-, and triglycerides, and acyl-CoA thioesters. It is an important enzyme in HDL metabolism. Hepatic lipase binds heparin.,online information:The Singapore human mutation and polymorphism database,similarity:Belongs to the AB hydrolase superfamily. Lipase family.,similarity:Contains 1 PLAT domain.,
Subcellular Location :	Secreted .
Expression :	Donated clones,Liver,Thymus,
Sort :	7316
No4 :	1
Host :	Rabbit
Modifications :	Unmodified

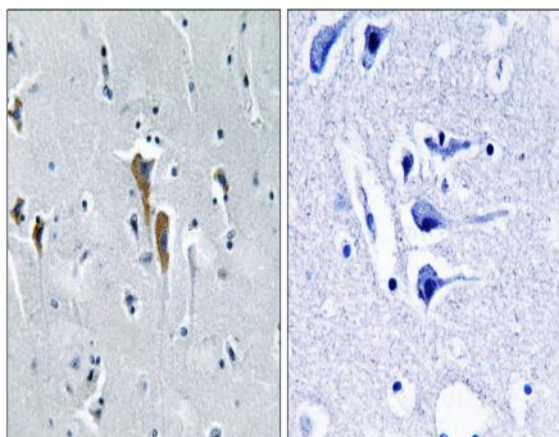
Products Images



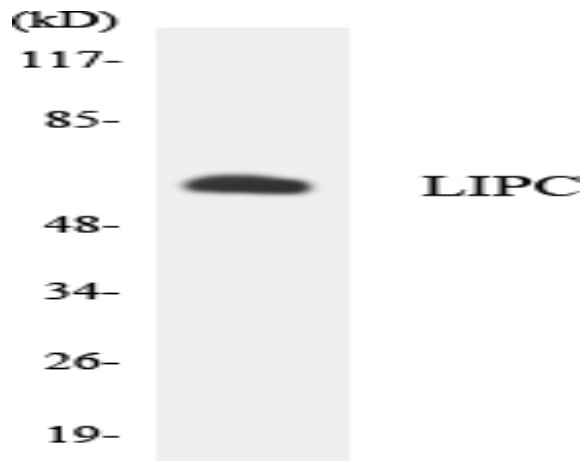
Western Blot analysis of A549 cells using Hepatic Lipase Polyclonal Antibody



Western blot analysis of LIPC Antibody. The lane on the right is blocked with the LIPC peptide.



Immunohistochemistry analysis of paraffin-embedded human brain, using LIPC Antibody. The lane on the right is blocked with the LIPC peptide.



Western blot analysis of the lysates from HT-29 cells using LIPC antibody.