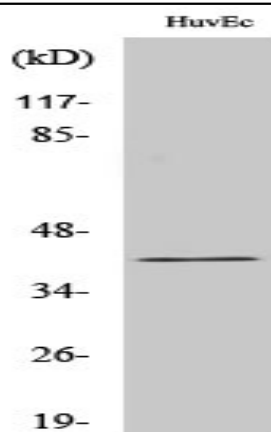


Gz- α Polyclonal Antibody

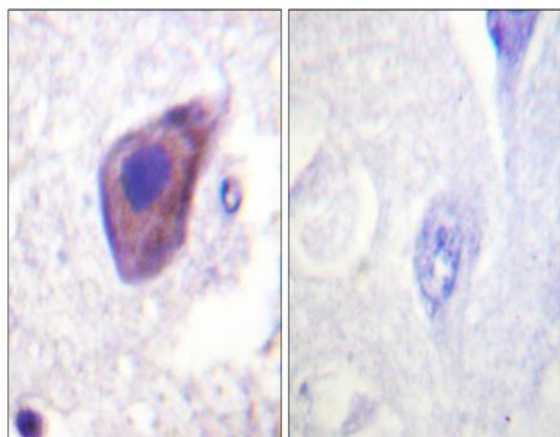
Catalog No :	YT2090
Reactivity :	Human;Mouse;Rat;Monkey
Applications :	WB;IHC;IF;ELISA
Target :	Gz- α
Fields :	>>Long-term depression
Gene Name :	GNAZ
Protein Name :	Guanine nucleotide-binding protein G(z) subunit alpha
Human Gene Id :	2781
Human Swiss Prot No :	P19086
Mouse Gene Id :	14687
Mouse Swiss Prot No :	O70443
Rat Gene Id :	25740
Rat Swiss Prot No :	P19627
Immunogen :	The antiserum was produced against synthesized peptide derived from human Gz-alpha. AA range:1-50
Specificity :	Gz- α Polyclonal Antibody detects endogenous levels of Gz- α protein.
Formulation :	Liquid in PBS containing 50% glycerol, 0.5% BSA and 0.02% sodium azide.
Source :	Polyclonal, Rabbit,IgG
Dilution :	WB 1:500 - 1:2000. IHC 1:100 - 1:300. ELISA: 1:40000.. IF 1:50-200

Purification :	The antibody was affinity-purified from rabbit antiserum by affinity-chromatography using epitope-specific immunogen.
Concentration :	1 mg/ml
Storage Stability :	-15°C to -25°C/1 year(Do not lower than -25°C)
Observed Band :	41kD
Cell Pathway :	Long-term depression;
Background :	G protein subunit alpha z(GNAZ) Homo sapiens The protein encoded by this gene is a member of a G protein subfamily that mediates signal transduction in pertussis toxin-insensitive systems. This encoded protein may play a role in maintaining the ionic balance of perilymphatic and endolymphatic cochlear fluids. [provided by RefSeq, Jul 2008],
Function :	function:Guanine nucleotide-binding proteins (G proteins) are involved as modulators or transducers in various transmembrane signaling systems.,similarity:Belongs to the G-alpha family. G(i/o/t/z) subfamily.,subunit:G proteins are composed of 3 units; alpha, beta and gamma. The alpha chain contains the guanine nucleotide binding site.,
Subcellular Location :	Membrane; Lipid-anchor.
Expression :	Brain,PNS,
Tag :	orthogonal
Sort :	7201
No4 :	1
Host :	Rabbit
Modifications :	Unmodified

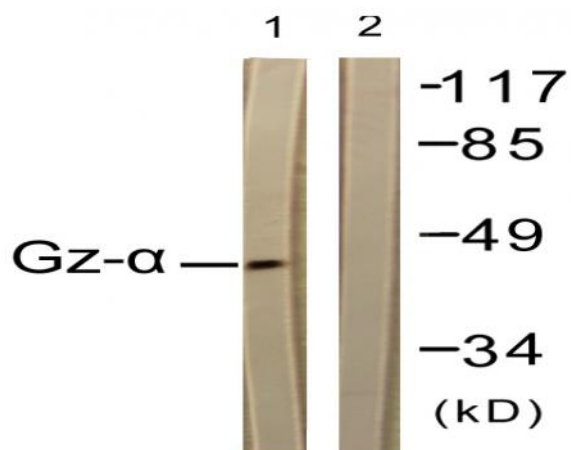
Products Images



Western Blot analysis of various cells using Gz- α Polyclonal Antibody



Immunohistochemistry analysis of paraffin-embedded human brain tissue, using Gz-alpha Antibody. The picture on the right is blocked with the synthesized peptide.



Western blot analysis of lysates from COS7 cells, treated with PMA 125ng/ml 30', using Gz-alpha Antibody. The lane on the right is blocked with the synthesized peptide.