

GTPBP2 Polyclonal Antibody

Catalog No :	YT2086
Reactivity :	Human;Mouse
Applications :	IHC;IF;ELISA
Target :	GTPBP2
Gene Name :	GTPBP2
Protein Name :	GTP-binding protein 2
Human Gene Id :	54676
Human Swiss Prot No :	Q9BX10
Mouse Gene Id :	56055
Mouse Swiss Prot No :	Q3UJK4
Immunogen :	The antiserum was produced against synthesized peptide derived from human GTPBP2. AA range:31-80
Specificity :	GTPBP2 Polyclonal Antibody detects endogenous levels of GTPBP2 protein.
Formulation :	Liquid in PBS containing 50% glycerol, 0.5% BSA and 0.02% sodium azide.
Source :	Polyclonal, Rabbit,IgG
Dilution :	IHC 1:100 - 1:300. ELISA: 1:40000.. IF 1:50-200
Purification :	The antibody was affinity-purified from rabbit antiserum by affinity-chromatography using epitope-specific immunogen.
Concentration :	1 mg/ml
Storage Stability :	-15°C to -25°C/1 year(Do not lower than -25°C)

Molecularweight : 66kD

Background : GTP-binding proteins, or G proteins, constitute a superfamily capable of binding GTP or GDP. G proteins are activated by binding GTP and are inactivated by hydrolyzing GTP to GDP. This general mechanism enables G proteins to perform a wide range of biologic activities.[supplied by OMIM, Jan 2003],

Function : induction:Up-regulated by IFN-gamma in human monocytic cell line THP-1.,similarity:Belongs to the GTPBP1 GTP-binding protein family.,tissue specificity:Predominantly expressed in thymus, spleen, and testis. Expressed at lower levels in brain, lung, kidney, and ovary.,

Subcellular Location : intracellular,intracellular membrane-bounded organelle,

Expression : Predominantly expressed in thymus, spleen, and testis. Expressed at lower levels in brain, lung, kidney, and ovary.

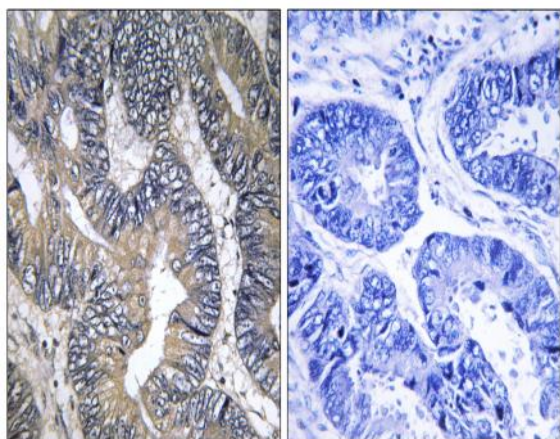
Sort : 7194

No4 : 1

Host : Rabbit

Modifications : Unmodified

Products Images



Immunohistochemistry analysis of paraffin-embedded human colon carcinoma tissue, using GTPBP2 Antibody. The picture on the right is blocked with the synthesized peptide.