

## GRO $\gamma$ Polyclonal Antibody

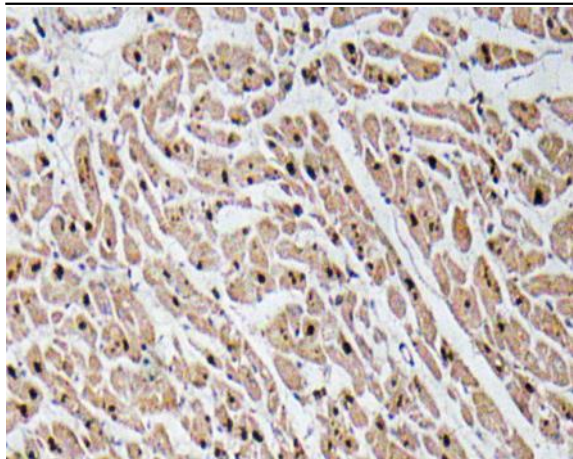
<b>Catalog No :</b>	YT2075
<b>Reactivity :</b>	Human;Rat;Mouse;
<b>Applications :</b>	IHC;IF;ELISA
<b>Target :</b>	GRO $\gamma$
<b>Fields :</b>	>>Cytokine-cytokine receptor interaction;>>Viral protein interaction with cytokine and cytokine receptor;>>Chemokine signaling pathway;>>NF-kappa B signaling pathway;>>NOD-like receptor signaling pathway;>>IL-17 signaling pathway;>>TNF signaling pathway;>>Alcoholic liver disease;>>Epithelial cell signaling in Helicobacter pylori infection;>>Legionellosis;>>Amoebiasis;>>Kaposi sarcoma-associated herpesvirus infection;>>Rheumatoid arthritis;>>Lipid and atherosclerosis
<b>Gene Name :</b>	CXCL3
<b>Protein Name :</b>	C-X-C motif chemokine 3
<b>Human Gene Id :</b>	2921
<b>Human Swiss Prot No :</b>	P19876
<b>Mouse Swiss Prot No :</b>	Q6W5C0
<b>Immunogen :</b>	The antiserum was produced against synthesized peptide derived from human GRO $\gamma$ . AA range:58-107
<b>Specificity :</b>	GRO $\gamma$ Polyclonal Antibody detects endogenous levels of GRO $\gamma$ protein.
<b>Formulation :</b>	Liquid in PBS containing 50% glycerol, 0.5% BSA and 0.02% sodium azide.
<b>Source :</b>	Polyclonal, Rabbit,IgG
<b>Dilution :</b>	IHC 1:100 - 1:300. ELISA: 1:10000.. IF 1:50-200
<b>Purification :</b>	The antibody was affinity-purified from rabbit antiserum by affinity-chromatography using epitope-specific immunogen.

---

<b>Concentration :</b>	1 mg/ml
<b>Storage Stability :</b>	-15°C to -25°C/1 year(Do not lower than -25°C)
<b>Molecularweight :</b>	11kD
<b>Cell Pathway :</b>	Cytokine-cytokine receptor interaction;Chemokine;
<b>Background :</b>	This antimicrobial gene encodes a member of the CXC subfamily of chemokines. The encoded protein is a secreted growth factor that signals through the G-protein coupled receptor, CXC receptor 2. This protein plays a role in inflammation and as a chemoattractant for neutrophils. [provided by RefSeq, Sep 2014],
<b>Function :</b>	function:Ligand for CXCR2 (By similarity). Has chemotactic activity for neutrophils. May play a role in inflammation and exert its effects on endothelial cells in an autocrine fashion. In vitro, the processed form GRO-gamma(5-73) shows a fivefold higher chemotactic activity for neutrophilic granulocytes.,online information:CXCL3 entry,PTM:N-terminal processed form GRO-gamma(5-73) is produced by proteolytic cleavage after secretion from peripheral blood monocytes.,similarity:Belongs to the intercrine alpha (chemokine CxC) family.,
<b>Subcellular Location :</b>	Secreted.
<b>Expression :</b>	Histiocytic lymphoma,Lung,Peripheral blood monocyte,Placenta,
<b>Tag :</b>	orthogonal
<b>Sort :</b>	855
<b>No4 :</b>	1
<b>Host :</b>	Rabbit
<b>Modifications :</b>	Unmodified

---

## Products Images



Immunohistochemistry analysis of GRO $\alpha$  antibody in paraffin-embedded human heart tissue.