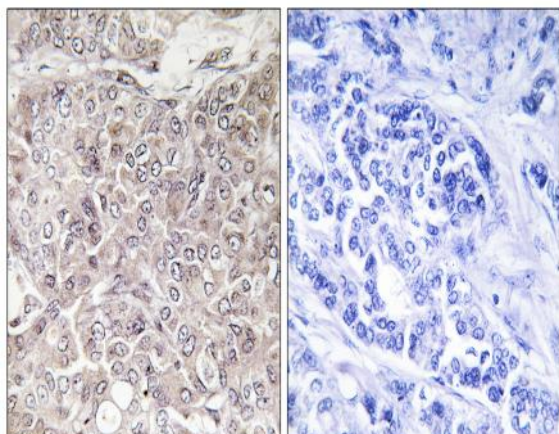


GRIN3 Polyclonal Antibody

Catalog No :	YT2061
Reactivity :	Human;Mouse
Applications :	IHC;IF;ELISA
Target :	GRIN3
Gene Name :	GPRIN3
Protein Name :	G protein-regulated inducer of neurite outgrowth 3
Human Gene Id :	285513
Human Swiss Prot No :	Q6ZVF9
Mouse Swiss Prot No :	Q8BWS5
Immunogen :	The antiserum was produced against synthesized peptide derived from human GPRIN3. AA range:131-180
Specificity :	GRIN3 Polyclonal Antibody detects endogenous levels of GRIN3 protein.
Formulation :	Liquid in PBS containing 50% glycerol, 0.5% BSA and 0.02% sodium azide.
Source :	Polyclonal, Rabbit,IgG
Dilution :	IHC 1:100 - 1:300. ELISA: 1:40000.. IF 1:50-200
Purification :	The antibody was affinity-purified from rabbit antiserum by affinity-chromatography using epitope-specific immunogen.
Concentration :	1 mg/ml
Storage Stability :	-15°C to -25°C/1 year(Do not lower than -25°C)
Molecularweight :	82kD

Background :	<u>function:May be involved in neurite outgrowth.,</u>
Function :	<u>function:May be involved in neurite outgrowth.,</u>
Expression :	<u>Brain,</u>
Sort :	<u>7114</u>
No4 :	<u>1</u>
Host :	<u>Rabbit</u>
Modifications :	<u>Unmodified</u>

Products Images



Immunohistochemistry analysis of paraffin-embedded human breast carcinoma, using GPRIN3 Antibody. The picture on the right is blocked with the synthesized peptide.