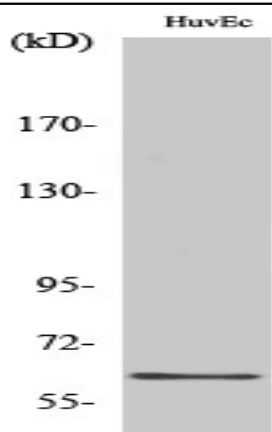


GRB14 Polyclonal Antibody

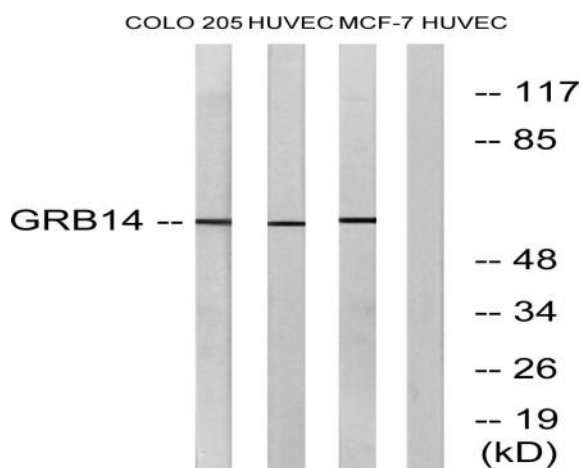
Catalog No :	YT2055
Reactivity :	Human;Mouse;Rat
Applications :	WB;IHC;IF;ELISA
Target :	GRB14
Gene Name :	GRB14
Protein Name :	Growth factor receptor-bound protein 14
Human Gene Id :	2888
Human Swiss Prot No :	Q14449
Mouse Gene Id :	50915
Mouse Swiss Prot No :	Q9JLM9
Rat Gene Id :	58844
Rat Swiss Prot No :	O88900
Immunogen :	The antiserum was produced against synthesized peptide derived from human GRB14. AA range:81-130
Specificity :	GRB14 Polyclonal Antibody detects endogenous levels of GRB14 protein.
Formulation :	Liquid in PBS containing 50% glycerol, 0.5% BSA and 0.02% sodium azide.
Source :	Polyclonal, Rabbit,IgG
Dilution :	WB 1:500 - 1:2000. IHC 1:100 - 1:300. ELISA: 1:40000.. IF 1:50-200
Purification :	The antibody was affinity-purified from rabbit antiserum by affinity-chromatography using epitope-specific immunogen.

Concentration :	1 mg/ml
Storage Stability :	-15°C to -25°C/1 year(Do not lower than -25°C)
Observed Band :	61kD
Cell Pathway :	Stem cell pathway
Background :	<p>The product of this gene belongs to a small family of adapter proteins that are known to interact with a number of receptor tyrosine kinases and signaling molecules. This gene encodes a growth factor receptor-binding protein that interacts with insulin receptors and insulin-like growth-factor receptors. This protein likely has an inhibitory effect on receptor tyrosine kinase signaling and, in particular, on insulin receptor signaling. This gene may play a role in signaling pathways that regulate growth and metabolism. Alternative splicing results in multiple transcript variants. [provided by RefSeq, Dec 2014],</p>
Function :	<p>function:Interacts with the cytoplasmic domain of the autophosphorylated insulin receptor which is then inhibited. The interaction is mediated by the SH2 domain.,PTM:Phosphorylated on serine residues.,similarity:Belongs to the GRB7/10/14 family.,similarity:Contains 1 PH domain.,similarity:Contains 1 Ras-associating domain.,similarity:Contains 1 SH2 domain.,subunit:Binds to the ankyrin repeat region of TNKS2 via its N-terminus.,tissue specificity:Expressed at high levels in the liver, kidney, pancreas, testis, ovary, heart and skeletal muscle.,</p>
Subcellular Location :	Cytoplasm . Endosome membrane ; Peripheral membrane protein . Upon insulin stimulation, translocates to the plasma membrane. .
Expression :	Expressed at high levels in the liver, kidney, pancreas, testis, ovary, heart and skeletal muscle.
Sort :	7097
No4 :	1
Host :	Rabbit
Modifications :	Unmodified

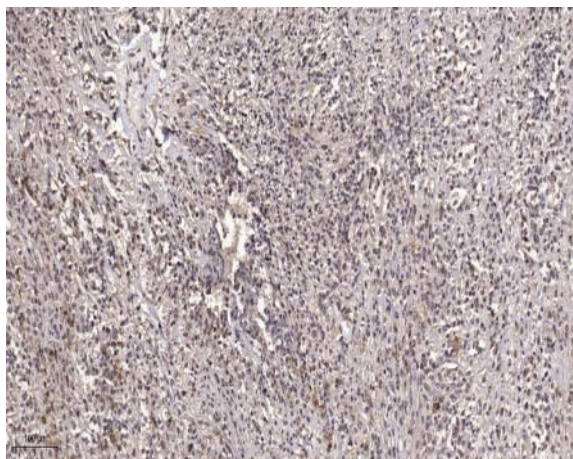
Products Images



Western Blot analysis of various cells using GRB14 Polyclonal Antibody



Western blot analysis of lysates from HUVEC, COLO, and MCF-7 cells, using GRB14 Antibody. The lane on the right is blocked with the synthesized peptide.



Immunohistochemical analysis of paraffin-embedded human small intestinal carcinoma tissue. 1, primary Antibody was diluted at 1:200 (4° overnight). 2, Sodium citrate pH 6.0 was used for antigen retrieval (>98° C, 20min). 3, Secondary antibody was diluted at 1:200