

## Granzyme K Polyclonal Antibody

<b>Catalog No :</b>	YT2051
<b>Reactivity :</b>	Human;Mouse;Rat
<b>Applications :</b>	WB;IHC;IF;ELISA
<b>Target :</b>	Granzyme K
<b>Gene Name :</b>	GZMK
<b>Protein Name :</b>	Granzyme K
<b>Human Gene Id :</b>	3003
<b>Human Swiss Prot No :</b>	P49863
<b>Mouse Gene Id :</b>	14945
<b>Mouse Swiss Prot No :</b>	O35205
<b>Rat Gene Id :</b>	29165
<b>Rat Swiss Prot No :</b>	P49864
<b>Immunogen :</b>	The antiserum was produced against synthesized peptide derived from human GRAK. AA range:61-110
<b>Specificity :</b>	Granzyme K Polyclonal Antibody detects endogenous levels of Granzyme K protein.
<b>Formulation :</b>	Liquid in PBS containing 50% glycerol, 0.5% BSA and 0.02% sodium azide.
<b>Source :</b>	Polyclonal, Rabbit,IgG
<b>Dilution :</b>	WB 1:500 - 1:2000. IHC 1:100 - 1:300. IF 1:200 - 1:1000. ELISA: 1:20000. Not yet tested in other applications.
<b>Purification :</b>	The antibody was affinity-purified from rabbit antiserum by affinity-

---

chromatography using epitope-specific immunogen.

---

**Concentration :** 1 mg/ml

---

**Storage Stability :** -15°C to -25°C/1 year(Do not lower than -25°C)

---

**Observed Band :** 33kD

---

**Background :** This gene product is a member of a group of related serine proteases from the cytoplasmic granules of cytotoxic lymphocytes. Cytolytic T lymphocytes (CTL) and natural killer (NK) cells share the remarkable ability to recognize, bind, and lyse specific target cells. They are thought to protect their host by lysing cells bearing on their surface 'nonself' antigens, usually peptides or proteins resulting from infection by intracellular pathogens. The protein described here lacks consensus sequences for N-glycosylation present in other granzymes. [provided by RefSeq, Jul 2008],

---

**Function :** similarity:Belongs to the peptidase S1 family. Granzyme subfamily.,similarity:Contains 1 peptidase S1 domain.,tissue specificity:Expressed in lung, spleen, thymus and peripheral blood leukocytes.,

---

**Subcellular Location :** Secreted. Cytoplasmic granule.

---

**Expression :** Expressed in lung, spleen, thymus and peripheral blood leukocytes.

---

**Tag :** hot

---

**Sort :** 853

---

**No4 :** 1

---

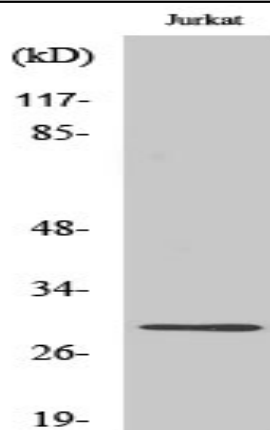
**Host :** Rabbit

---

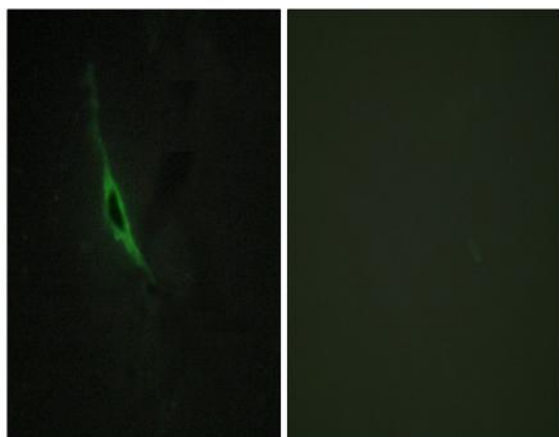
**Modifications :** Unmodified

---

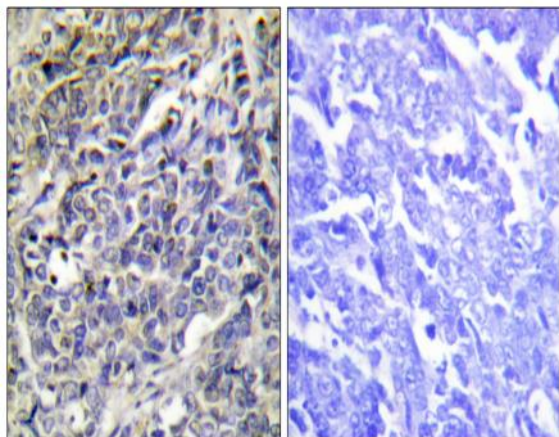
## Products Images



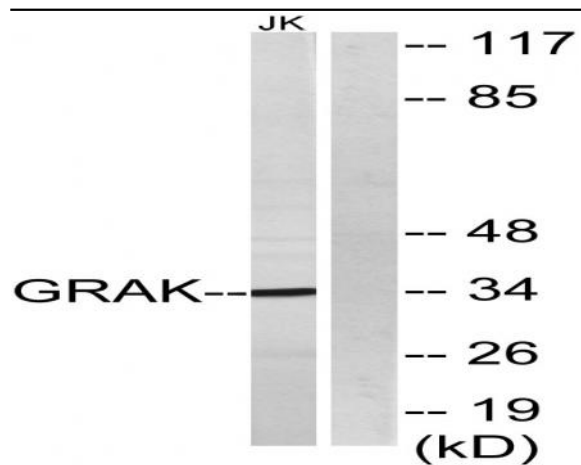
Western Blot analysis of various cells using Granzyme K Polyclonal Antibody diluted at 1:1000



Immunofluorescence analysis of NIH/3T3 cells, using GRAK Antibody. The picture on the right is blocked with the synthesized peptide.



Immunohistochemistry analysis of paraffin-embedded human lung carcinoma tissue, using GRAK Antibody. The picture on the right is blocked with the synthesized peptide.



Western blot analysis of lysates from Jurkat cells, using GRAK Antibody. The lane on the right is blocked with the synthesized peptide.