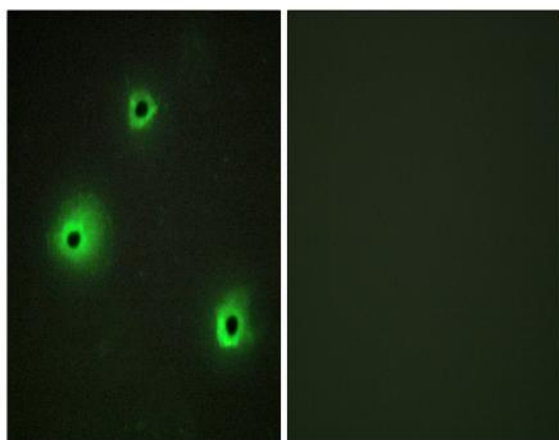


Granzyme H Polyclonal Antibody

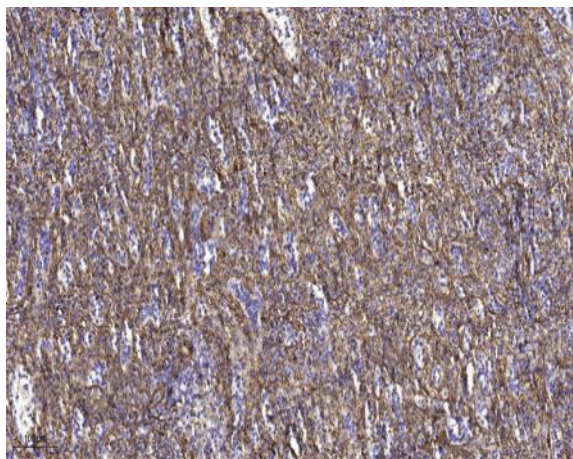
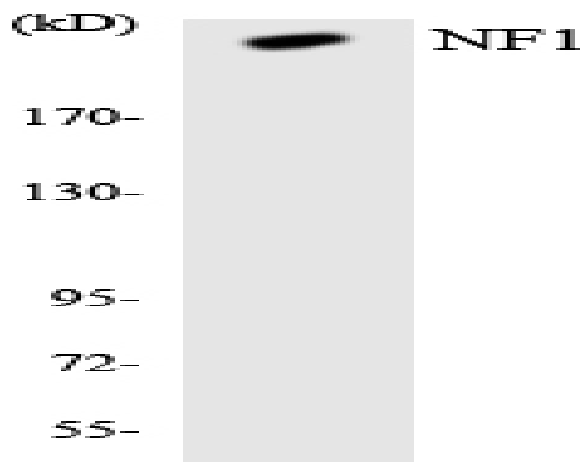
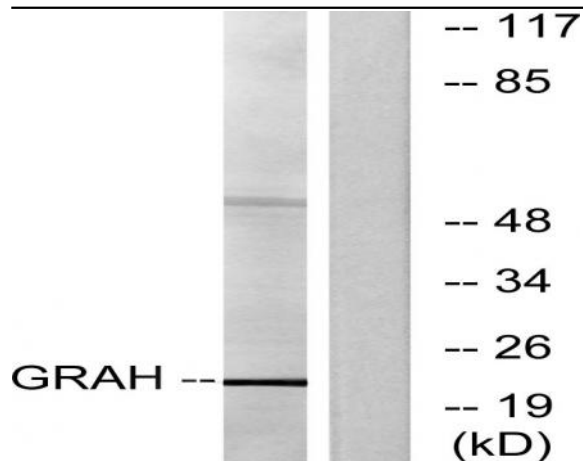
Catalog No :	YT2050
Reactivity :	Human;Rat;Mouse;
Applications :	WB;IHC;IF;ELISA
Target :	Granzyme H
Gene Name :	GZMH
Protein Name :	Granzyme H
Human Gene Id :	2999
Human Swiss Prot No :	P20718
Immunogen :	The antiserum was produced against synthesized peptide derived from human GRAH. AA range:51-100
Specificity :	Granzyme H Polyclonal Antibody detects endogenous levels of Granzyme H protein.
Formulation :	Liquid in PBS containing 50% glycerol, 0.5% BSA and 0.02% sodium azide.
Source :	Polyclonal, Rabbit,IgG
Dilution :	WB 1:500 - 1:2000. IHC 1:100 - 1:300. IF 1:200 - 1:1000. ELISA: 1:40000. Not yet tested in other applications.
Purification :	The antibody was affinity-purified from rabbit antiserum by affinity-chromatography using epitope-specific immunogen.
Concentration :	1 mg/ml
Storage Stability :	-15°C to -25°C/1 year(Do not lower than -25°C)
Observed Band :	23kD

Background :	This gene encodes a member of the peptidase S1 family of serine proteases. Alternative splicing results in multiple transcript variants, at least one of which encodes a preproprotein that is proteolytically processed to generate a chymotrypsin-like protease. This protein is reported to be constitutively expressed in the NK (natural killer) cells of the immune system and may play a role in the cytotoxic arm of the innate immune response by inducing target cell death and by directly cleaving substrates in pathogen-infected cells. This gene is present in a gene cluster with another member of the granzyme subfamily on chromosome 14. [provided by RefSeq, Nov 2015],
Function :	function:This enzyme is probably necessary for target cell lysis in cell-mediated immune responses.,similarity:Belongs to the peptidase S1 family.,similarity:Belongs to the peptidase S1 family. Granzyme subfamily.,similarity:Contains 1 peptidase S1 domain.,subcellular location:Cytoplasmic granules of cytolytic T-lymphocytes.,
Subcellular Location :	Cytolytic granule .
Expression :	Constitutively expressed in NK cells.
Sort :	7089
No4 :	1
Host :	Rabbit
Modifications :	Unmodified

Products Images



Immunofluorescence analysis of A549 cells, using GRAH Antibody. The picture on the right is blocked with the synthesized peptide.



Immunohistochemical analysis of paraffin-embedded human spleen tissue. 1, primary Antibody was diluted at 1:200 (4° overnight). 2, Sodium citrate pH 6.0 was used for antigen retrieval (>98 °C, 20min). 3, Secondary antibody was diluted at 1:200