

## Gamma Tubulin mouse Monoclonal Antibody(6C12)

<b>Catalog No :</b>	YM3653
<b>Reactivity :</b>	Human;Rat;Mouse
<b>Applications :</b>	WB;IHC;IF
<b>Target :</b>	Tubulin Gamma
<b>Fields :</b>	>>Human papillomavirus infection
<b>Gene Name :</b>	TUBG1
<b>Protein Name :</b>	TUBG1
<b>Human Gene Id :</b>	7283
<b>Human Swiss Prot No :</b>	P23258
<b>Mouse Swiss Prot No :</b>	P83887
<b>Rat Swiss Prot No :</b>	P83888
<b>Immunogen :</b>	Synthetic Peptide of Gamma Tubulin
<b>Specificity :</b>	Gamma Tubulin protein detects endogenous levels of TUBG1
<b>Formulation :</b>	Liquid in PBS containing 50% glycerol, 0.5% BSA and 0.02% sodium azide.
<b>Source :</b>	Monoclonal, Mouse
<b>Dilution :</b>	WB 1:1000-2000, IHC 1:100-200. IF 1:50-200
<b>Purification :</b>	The antibody was affinity-purified from mouse ascites by affinity-chromatography using specific immunogen.
<b>Concentration :</b>	1 mg/ml

---

**Storage Stability :** -15°C to -25°C/1 year(Do not lower than -25°C)

---

**Observed Band :** 50kD

---

**Background :** This gene encodes a member of the tubulin superfamily. The encoded protein localizes to the centrosome where it binds to microtubules as part of a complex referred to as the gamma-tubulin ring complex. The protein mediates microtubule nucleation and is required for microtubule formation and progression of the cell cycle. A pseudogene of this gene is found on chromosome 7. [provided by RefSeq, Jan 2009],

---

**Function :** function:Tubulin is the major constituent of microtubules. Gamma tubulin is found at microtubule organizing centers (MTOC) such as the spindle poles or the centrosome, suggesting that it is involved in the minus-end nucleation of microtubule assembly.,mass spectrometry: PubMed:11840567,similarity:Belongs to the tubulin family.,subunit:Interacts with GCP2 and GCP3. Interacts with B9D2.,

---

**Subcellular Location :** Cytoplasm, cytoskeleton, microtubule organizing center, centrosome .  
Cytoplasm, cytoskeleton, spindle . Localizes to mitotic spindle microtubules. .

---

**Expression :** Mammary cancer, Skin,

---

**Sort :** 6422

---

**No4 :** 1

---

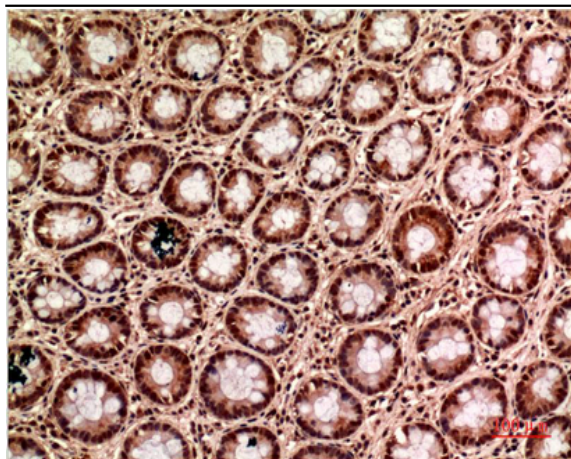
**Host :** Mouse

---

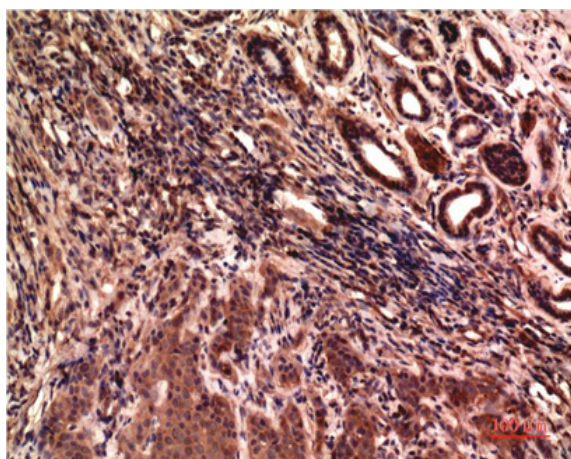
**Modifications :** Unmodified

---

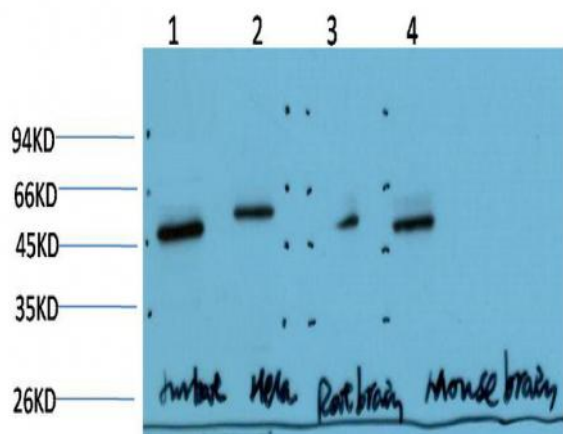
## Products Images



Immunohistochemical analysis of paraffin-embedded Human Colon Carcinoma Tissue using Gamma Tubulin Mouse mAb diluted at 1:200.



Immunohistochemical analysis of paraffin-embedded Human Breast Carcinoma Tissue using Gamma Tubulin Mouse mAb diluted at 1:200.



Western Blot analysis of paraffin-embedded Jurkat/Hela/Mouse-brain/Rat-brain using Gamma Tubulin Mouse mAb diluted at 1:1000.