

GPRC5C Polyclonal Antibody

Catalog No :	YT2038
Reactivity :	Human;Mouse;Rat;Monkey
Applications :	WB;IF;ELISA
Target :	GPRC5C
Gene Name :	GPRC5C
Protein Name :	G-protein coupled receptor family C group 5 member C
Human Gene Id :	55890
Human Swiss Prot No :	Q9NQ84
Mouse Gene Id :	70355
Mouse Swiss Prot No :	Q8K3J9
Rat Swiss Prot No :	Q3KRC4
Immunogen :	The antiserum was produced against synthesized peptide derived from human GPRC5C. AA range:51-100
Specificity :	GPRC5C Polyclonal Antibody detects endogenous levels of GPRC5C protein.
Formulation :	Liquid in PBS containing 50% glycerol, 0.5% BSA and 0.02% sodium azide.
Source :	Polyclonal, Rabbit,IgG
Dilution :	WB 1:500 - 1:2000. IF 1:200 - 1:1000. ELISA: 1:5000. Not yet tested in other applications.
Purification :	The antibody was affinity-purified from rabbit antiserum by affinity-chromatography using epitope-specific immunogen.
Concentration :	1 mg/ml

Storage Stability : -15°C to -25°C/1 year(Do not lower than -25°C)

Observed Band : 48kD

Background : The protein encoded by this gene is a member of the type 3 G protein-coupled receptor family. Members of this superfamily are characterized by a signature 7-transmembrane domain motif. The specific function of this protein is unknown; however, this protein may mediate the cellular effects of retinoic acid on the G protein signal transduction cascade. Two transcript variants encoding different isoforms have been found for this gene. [provided by RefSeq, Jul 2008],

Function : function:Unknown. This retinoic acid-inducible G-protein coupled receptor provide evidence for a possible interaction between retinoid and G-protein signaling pathways.,induction:By all-trans retinoic acid (ATRA).,PTM:Phosphorylated upon DNA damage, probably by ATM or ATR.,similarity:Belongs to the G-protein coupled receptor 3 family.,subcellular location:Localized in the plasma membrane and perinuclear vesicles.,tissue specificity:Expression is highest in the periphery, particularly in the stomach, but also in the kidney, liver, pancreas, and prostate. In brain, levels of expression are generally lower than in the periphery, with the exception of cerebellum, spinal cord, and dorsal root ganglia (DRG).,

Subcellular Location : Cell membrane; Multi-pass membrane protein. Cytoplasmic vesicle membrane; Multi-pass membrane protein. Localized in the plasma membrane and perinuclear vesicles.

Expression : Expression is highest in the periphery, particularly in the stomach, but also in the kidney, liver, pancreas, and prostate. In brain, levels of expression are generally lower than in the periphery, with the exception of cerebellum, spinal cord, and dorsal root ganglia (DRG).

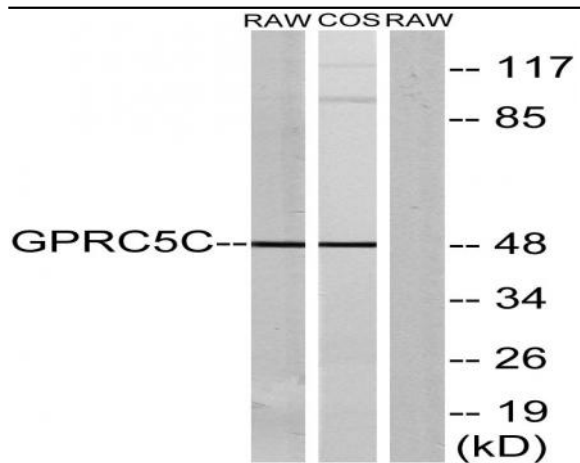
Sort : 7068

No4 : 1

Host : Rabbit

Modifications : Unmodified

Products Images



Western blot analysis of lysates from RAW264.7 and COS7 cells, using GPRC5C Antibody. The lane on the right is blocked with the synthesized peptide.