

## GPR91 Polyclonal Antibody

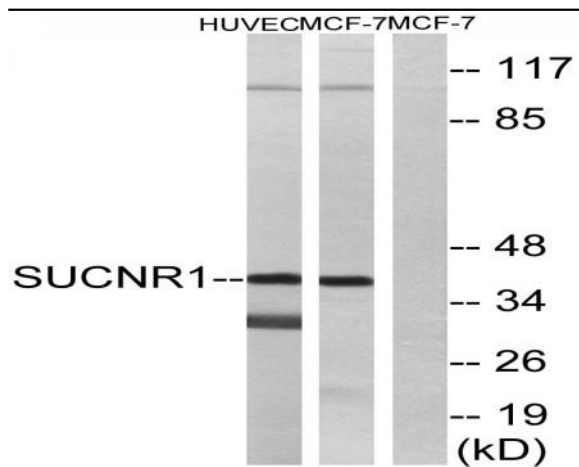
<b>Catalog No :</b>	YT2035
<b>Reactivity :</b>	Human;Mouse;Rat;Pig
<b>Applications :</b>	WB;IF;ELISA
<b>Target :</b>	GPR91
<b>Fields :</b>	>>cAMP signaling pathway
<b>Gene Name :</b>	SUCNR1
<b>Protein Name :</b>	Succinate receptor 1
<b>Human Gene Id :</b>	56670
<b>Human Swiss Prot No :</b>	Q9BXA5
<b>Mouse Gene Id :</b>	84112
<b>Mouse Swiss Prot No :</b>	Q99MT6
<b>Rat Gene Id :</b>	408199
<b>Rat Swiss Prot No :</b>	Q6IYF9
<b>Immunogen :</b>	The antiserum was produced against synthesized peptide derived from human SUCNR1. AA range:100-149
<b>Specificity :</b>	GPR91 Polyclonal Antibody detects endogenous levels of GPR91 protein.
<b>Formulation :</b>	Liquid in PBS containing 50% glycerol, 0.5% BSA and 0.02% sodium azide.
<b>Source :</b>	Polyclonal, Rabbit,IgG
<b>Dilution :</b>	WB 1:500 - 1:2000. IF 1:200 - 1:1000. ELISA: 1:10000. Not yet tested in other applications.

---

<b>Purification :</b>	The antibody was affinity-purified from rabbit antiserum by affinity-chromatography using epitope-specific immunogen.
<b>Concentration :</b>	1 mg/ml
<b>Storage Stability :</b>	-15°C to -25°C/1 year(Do not lower than -25°C)
<b>Observed Band :</b>	38kD
<b>Background :</b>	This gene encodes a G-protein-coupled receptor for succinate, an intermediate molecule of the citric acid cycle. It is involved in the promotion of hematopoietic progenitor cell development, and it has a potential role in renovascular hypertension which has known correlations to renal failure, diabetes and atherosclerosis. [provided by RefSeq, Oct 2009],
<b>Function :</b>	function:Receptor for succinate.,similarity:Belongs to the G-protein coupled receptor 1 family.,tissue specificity:Expressed specifically in kidney.,
<b>Subcellular Location :</b>	Cell membrane ; Multi-pass membrane protein .
<b>Expression :</b>	Expressed specifically in kidney.
<b>Tag :</b>	orthogonal,hot
<b>Sort :</b>	7065
<b>No4 :</b>	1
<b>Host :</b>	Rabbit
<b>Modifications :</b>	Unmodified

---

## Products Images



Western blot analysis of lysates from HUVEC and MCF-7 cells, using SUCNR1 Antibody. The lane on the right is blocked with the synthesized peptide.