

GPR82 Polyclonal Antibody

| | |
|------------------------------|---|
| Catalog No : | YT2031 |
| Reactivity : | Human;Mouse |
| Applications : | WB;ELISA |
| Target : | GPR82 |
| Gene Name : | GPR82 |
| Protein Name : | Probable G-protein coupled receptor 82 |
| Human Gene Id : | 27197 |
| Human Swiss Prot No : | Q96P67 |
| Mouse Gene Id : | 319200 |
| Mouse Swiss Prot No : | Q8BZR0 |
| Immunogen : | The antiserum was produced against synthesized peptide derived from human GPR82. AA range:121-170 |
| Specificity : | GPR82 Polyclonal Antibody detects endogenous levels of GPR82 protein. |
| Formulation : | Liquid in PBS containing 50% glycerol, 0.5% BSA and 0.02% sodium azide. |
| Source : | Polyclonal, Rabbit,IgG |
| Dilution : | WB 1:500 - 1:2000. ELISA: 1:10000. Not yet tested in other applications. |
| Purification : | The antibody was affinity-purified from rabbit antiserum by affinity-chromatography using epitope-specific immunogen. |
| Concentration : | 1 mg/ml |
| Storage Stability : | -15°C to -25°C/1 year(Do not lower than -25°C) |

Observed Band : 35kD

Background : The protein encoded by this gene is an orphan G protein-coupled receptor of unknown function. The encoded protein is a member of a family of proteins that contain seven transmembrane domains and transduce extracellular signals through heterotrimeric G proteins. [provided by RefSeq, Sep 2011],

Function : function:Orphan receptor.,similarity:Belongs to the G-protein coupled receptor 1 family.,

Subcellular Location : Cell membrane; Multi-pass membrane protein.

Expression : Placenta,Thyroid,

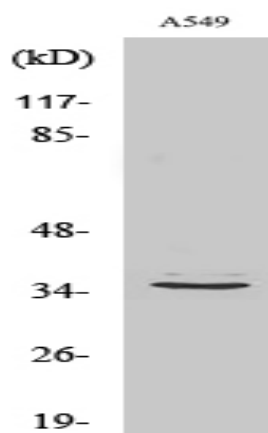
Sort : 7060

No4 : 1

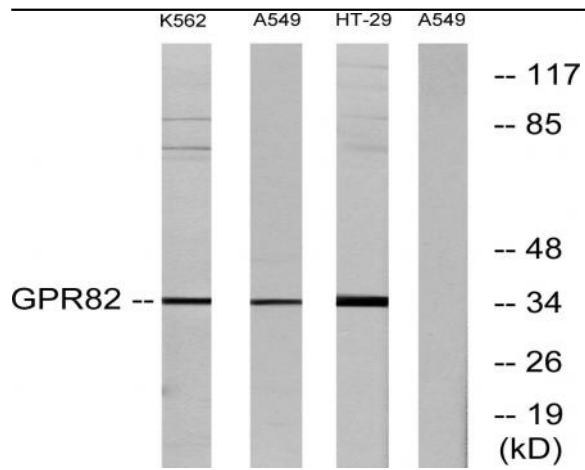
Host : Rabbit

Modifications : Unmodified

Products Images



Western Blot analysis of various cells using GPR82 Polyclonal Antibody



Western blot analysis of lysates from A549, K562, and HT-29 cells, using GPR82 Antibody. The lane on the right is blocked with the synthesized peptide.