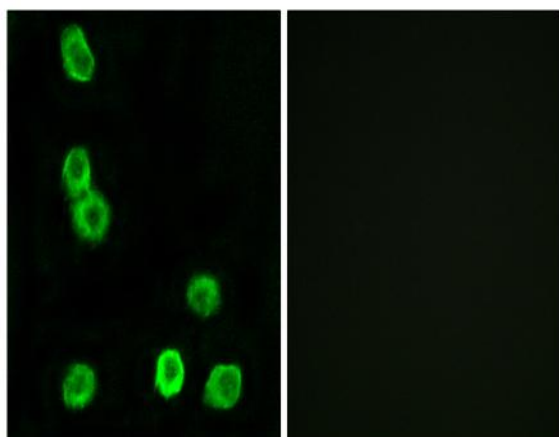


GPR63 Polyclonal Antibody

Catalog No :	YT2028
Reactivity :	Human;Mouse
Applications :	IF;ELISA
Target :	GPR63
Gene Name :	GPR63
Protein Name :	Probable G-protein coupled receptor 63
Human Gene Id :	81491
Human Swiss Prot No :	Q9BZJ6
Mouse Gene Id :	81006
Mouse Swiss Prot No :	Q9EQQ3
Immunogen :	The antiserum was produced against synthesized peptide derived from human GPR63. AA range:370-419
Specificity :	GPR63 Polyclonal Antibody detects endogenous levels of GPR63 protein.
Formulation :	Liquid in PBS containing 50% glycerol, 0.5% BSA and 0.02% sodium azide.
Source :	Polyclonal, Rabbit,IgG
Dilution :	IF 1:200 - 1:1000. ELISA: 1:20000. Not yet tested in other applications.
Purification :	The antibody was affinity-purified from rabbit antiserum by affinity-chromatography using epitope-specific immunogen.
Concentration :	1 mg/ml
Storage Stability :	-15°C to -25°C/1 year(Do not lower than -25°C)

Molecularweight :	48kD
Background :	This gene encodes a G protein-coupled receptor. Multiple alternatively spliced variants, encoding the same protein, have been identified. [provided by RefSeq, Dec 2011],
Function :	function:Orphan receptor. May play a role in brain function.,similarity:Belongs to the G-protein coupled receptor 1 family.,tissue specificity:Expressed in brain; detected in the frontal cortex, with lower levels in the thalamus, caudate, hypothalamus and midbrain.,
Subcellular Location :	Cell membrane; Multi-pass membrane protein.
Expression :	Expressed in brain; detected in the frontal cortex, with lower levels in the thalamus, caudate, hypothalamus and midbrain.
Sort :	7057
No4 :	1
Host :	Rabbit
Modifications :	Unmodified

Products Images



Immunofluorescence analysis of MCF7 cells, using GPR63 Antibody. The picture on the right is blocked with the synthesized peptide.