

GPR52 Polyclonal Antibody

Catalog No :	YT2025
Reactivity :	Human;Rat;Mouse;
Applications :	WB;ELISA
Target :	GPR52
Gene Name :	GPR52
Protein Name :	Probable G-protein coupled receptor 52
Human Gene Id :	9293
Human Swiss Prot No :	Q9Y2T5
Mouse Swiss Prot No :	P0C5J4
Immunogen :	The antiserum was produced against synthesized peptide derived from human GPR52. AA range:311-360
Specificity :	GPR52 Polyclonal Antibody detects endogenous levels of GPR52 protein.
Formulation :	Liquid in PBS containing 50% glycerol, 0.5% BSA and 0.02% sodium azide.
Source :	Polyclonal, Rabbit,IgG
Dilution :	WB 1:500 - 1:2000. ELISA: 1:10000. Not yet tested in other applications.
Purification :	The antibody was affinity-purified from rabbit antiserum by affinity-chromatography using epitope-specific immunogen.
Concentration :	1 mg/ml
Storage Stability :	-15°C to -25°C/1 year(Do not lower than -25°C)
Observed Band :	41kD

Background : Members of the G protein-coupled receptor (GPR) family play important roles in signal transduction from the external environment to the inside of the cell.[supplied by OMIM, Jul 2002],

Function : function:Orphan receptor.,similarity:Belongs to the G-protein coupled receptor 1 family.,

Subcellular Location : Cell membrane; Multi-pass membrane protein.

Expression : Expressed in brain, especially in striatum.

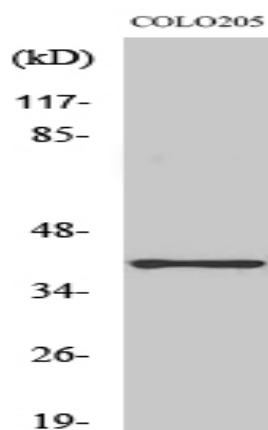
Sort : 7054

No4 : 1

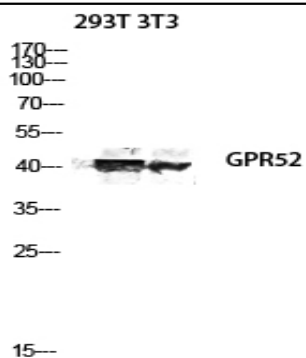
Host : Rabbit

Modifications : Unmodified

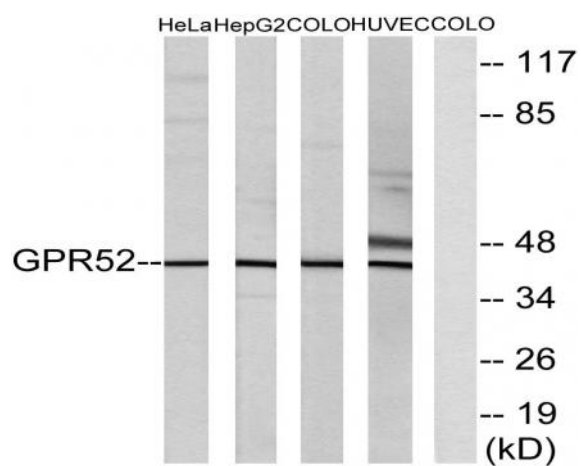
Products Images



Western Blot analysis of various cells using GPR52 Polyclonal Antibody diluted at 1:2000



Western blot analysis of 293T 3T3 lysis using GPR52 antibody.
Antibody was diluted at 1:2000



Western blot analysis of lysates from COLO, HUVEC, HeLa, and HepG2 cells, using GPR52 Antibody. The lane on the right is blocked with the synthesized peptide.