

GPR50 Polyclonal Antibody

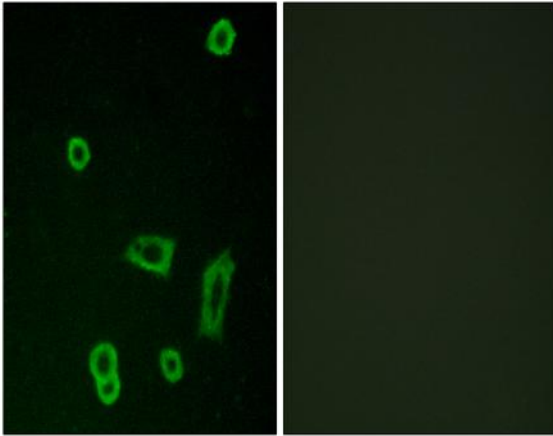
Catalog No :	YT2024
Reactivity :	Human;Rat;Mouse;
Applications :	WB;IF;ELISA
Target :	GPR50
Fields :	>>Neuroactive ligand-receptor interaction
Gene Name :	GPR50
Protein Name :	Melatonin-related receptor
Human Gene Id :	9248
Human Swiss Prot No :	Q13585
Mouse Swiss Prot No :	O88495
Immunogen :	The antiserum was produced against synthesized peptide derived from human MTR1L. AA range:301-350
Specificity :	GPR50 Polyclonal Antibody detects endogenous levels of GPR50 protein.
Formulation :	Liquid in PBS containing 50% glycerol, 0.5% BSA and 0.02% sodium azide.
Source :	Polyclonal, Rabbit,IgG
Dilution :	WB 1:500 - 1:2000. IF 1:200 - 1:1000. ELISA: 1:10000. Not yet tested in other applications.
Purification :	The antibody was affinity-purified from rabbit antiserum by affinity-chromatography using epitope-specific immunogen.
Concentration :	1 mg/ml
Storage Stability :	-15°C to -25°C/1 year(Do not lower than -25°C)

Observed Band :	68kD
Cell Pathway :	Neuroactive ligand-receptor interaction;
Background :	This gene product belongs to the G-protein coupled receptor 1 family. Even though this protein shares similarity with the melatonin receptors, it does not bind melatonin, however, it inhibits melatonin receptor 1A function through heterodimerization. Polymorphic variants of this gene have been associated with bipolar affective disorder in women. [provided by RefSeq, Jan 2010],
Function :	function:Does not bind melatonin.,similarity:Belongs to the G-protein coupled receptor 1 family.,tissue specificity:Hypothalamus and pituitary.,
Subcellular Location :	Cell membrane; Multi-pass membrane protein.
Expression :	Hypothalamus and pituitary.
Tag :	orthogonal
Sort :	7053
No4 :	1
Host :	Rabbit
Modifications :	Unmodified

Products Images



Western Blot analysis of various cells using GPR50 Polyclonal Antibody diluted at 1:1000



Immunofluorescence analysis of LOVO cells, using MTR1L Antibody. The picture on the right is blocked with the synthesized peptide.