

## GPR42 Polyclonal Antibody

<b>Catalog No :</b>	YT2021
<b>Reactivity :</b>	Human;Rat;Mouse;
<b>Applications :</b>	IF;ELISA
<b>Target :</b>	GPR42
<b>Gene Name :</b>	GPR42
<b>Protein Name :</b>	G-protein coupled receptor 42
<b>Human Gene Id :</b>	2866
<b>Human Swiss Prot No :</b>	O15529
<b>Immunogen :</b>	The antiserum was produced against synthesized peptide derived from human GPR42. AA range:12-61
<b>Specificity :</b>	GPR42 Polyclonal Antibody detects endogenous levels of GPR42 protein.
<b>Formulation :</b>	Liquid in PBS containing 50% glycerol, 0.5% BSA and 0.02% sodium azide.
<b>Source :</b>	Polyclonal, Rabbit,IgG
<b>Dilution :</b>	IF 1:200 - 1:1000. ELISA: 1:20000. Not yet tested in other applications.
<b>Purification :</b>	The antibody was affinity-purified from rabbit antiserum by affinity-chromatography using epitope-specific immunogen.
<b>Concentration :</b>	1 mg/ml
<b>Storage Stability :</b>	-15°C to -25°C/1 year(Do not lower than -25°C)
<b>Molecularweight :</b>	39kD
<b>Background :</b>	GPR42, also named as GPR42P, FFAR1L and GPR41L, belongs to the G-protein coupled receptor 1 family. GPR42 appears to have arisen by tandem

duplication of FFAR3 and have lost the ability to activate G-protein family in response to carboxylate ligands primarily due to an amino acid change at position 174. It is an orphan receptor.

---

**Subcellular Location :**

Cell membrane ; Multi-pass membrane protein .

---

**Sort :**

7050

---

**No4 :**

1

---

**Host :**

Rabbit

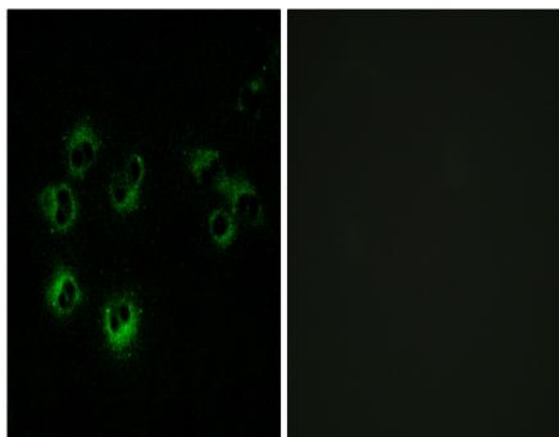
---

**Modifications :**

Unmodified

---

## Products Images



Immunofluorescence analysis of MCF-7 cells, using GPR42 Antibody. The picture on the right is blocked with the synthesized peptide.