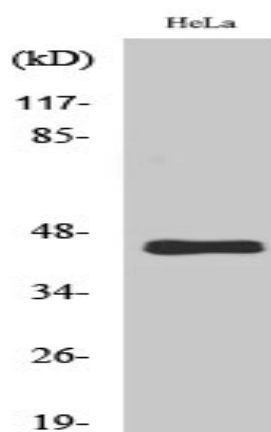


## GPR38 Polyclonal Antibody

<b>Catalog No :</b>	YT2018
<b>Reactivity :</b>	Human;Rat;Mouse;
<b>Applications :</b>	WB;ELISA
<b>Target :</b>	GPR38
<b>Fields :</b>	>>Neuroactive ligand-receptor interaction
<b>Gene Name :</b>	MLNR
<b>Protein Name :</b>	Motilin receptor
<b>Human Gene Id :</b>	2862
<b>Human Swiss Prot No :</b>	O43193
<b>Immunogen :</b>	Synthesized peptide derived from the C-terminal region of human GPR38.
<b>Specificity :</b>	GPR38 Polyclonal Antibody detects endogenous levels of GPR38 protein.
<b>Formulation :</b>	Liquid in PBS containing 50% glycerol, 0.5% BSA and 0.02% sodium azide.
<b>Source :</b>	Polyclonal, Rabbit,IgG
<b>Dilution :</b>	WB 1:500 - 1:2000. ELISA: 1:20000. Not yet tested in other applications.
<b>Purification :</b>	The antibody was affinity-purified from rabbit antiserum by affinity-chromatography using epitope-specific immunogen.
<b>Concentration :</b>	1 mg/ml
<b>Storage Stability :</b>	-15°C to -25°C/1 year(Do not lower than -25°C)
<b>Observed Band :</b>	45kD

<b>Cell Pathway :</b>	Neuroactive ligand-receptor interaction;
<b>Background :</b>	Motilin is a 22 amino acid peptide hormone expressed throughout the gastrointestinal (GI) tract. The protein encoded by this gene is a motilin receptor which is a member of the G-protein coupled receptor 1 family. This member is a multi-pass transmembrane protein, and is an important therapeutic target for the treatment of hypomotility disorders. [provided by RefSeq, Aug 2011],
<b>Function :</b>	function:Receptor for motilin.,similarity:Belongs to the G-protein coupled receptor 1 family.,tissue specificity:Expressed only in thyroid, stomach, and bone marrow.,
<b>Subcellular Location :</b>	Cell membrane; Multi-pass membrane protein.
<b>Expression :</b>	Expressed only in thyroid, stomach, and bone marrow.
<b>Sort :</b>	7047
<b>No4 :</b>	1
<b>Host :</b>	Rabbit
<b>Modifications :</b>	Unmodified

## Products Images



Western Blot analysis of various cells using GPR38 Polyclonal Antibody