

GPR32 Polyclonal Antibody

| | |
|------------------------------|---|
| Catalog No : | YT2013 |
| Reactivity : | Human;Rat;Mouse; |
| Applications : | WB;IF;ELISA |
| Target : | GPR32 |
| Gene Name : | GPR32 |
| Protein Name : | Probable G-protein coupled receptor 32 |
| Human Gene Id : | 2854 |
| Human Swiss Prot No : | O75388 |
| Immunogen : | The antiserum was produced against synthesized peptide derived from human GPR32. AA range:151-200 |
| Specificity : | GPR32 Polyclonal Antibody detects endogenous levels of GPR32 protein. |
| Formulation : | Liquid in PBS containing 50% glycerol, 0.5% BSA and 0.02% sodium azide. |
| Source : | Polyclonal, Rabbit,IgG |
| Dilution : | WB 1:500 - 1:2000. IF 1:200 - 1:1000. ELISA: 1:20000. Not yet tested in other applications. |
| Purification : | The antibody was affinity-purified from rabbit antiserum by affinity-chromatography using epitope-specific immunogen. |
| Concentration : | 1 mg/ml |
| Storage Stability : | -15°C to -25°C/1 year(Do not lower than -25°C) |
| Observed Band : | 33kD |
| Background : | This gene is intronless and encodes a member of the G-protein coupled receptor |

1 family. The encoded protein binds to resolvin D1 and lipoxin A4 and has been linked to pulmonary inflammation. A related pseudogene has been identified on chromosome 19. [provided by RefSeq, Nov 2012],

Function : function:Orphan receptor.,similarity:Belongs to the G-protein coupled receptor 1 family.,

Subcellular Location : Cell membrane; Multi-pass membrane protein.

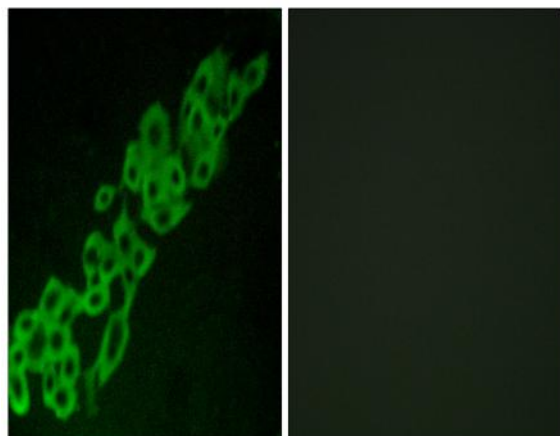
Sort : 7042

No4 : 1

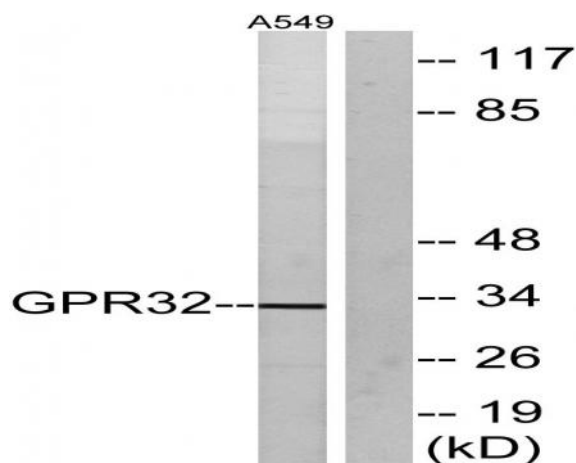
Host : Rabbit

Modifications : Unmodified

Products Images



Immunofluorescence analysis of A549 cells, using GPR32 Antibody. The picture on the right is blocked with the synthesized peptide.



Western blot analysis of lysates from A549 cells, using GPR32 Antibody. The lane on the right is blocked with the synthesized peptide.