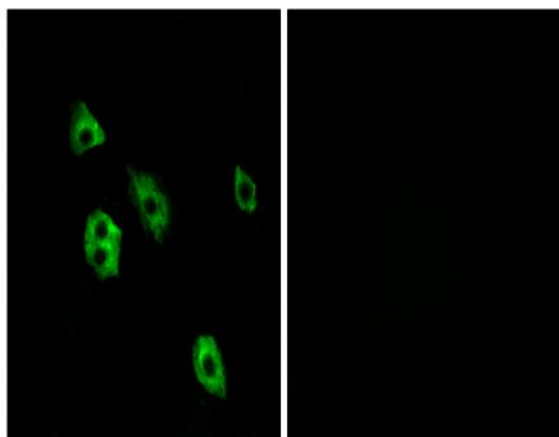


GPR27 Polyclonal Antibody

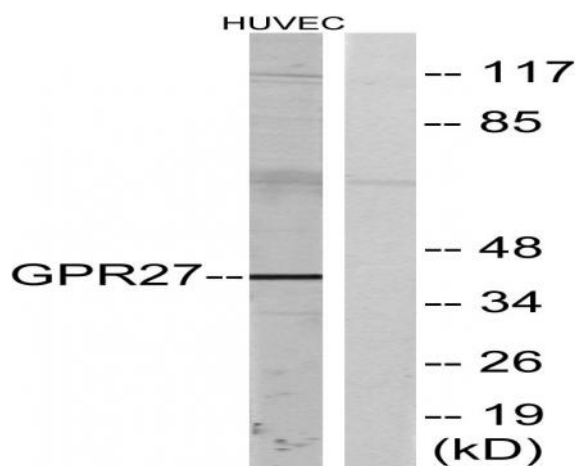
Catalog No :	YT2011
Reactivity :	Human;Mouse;Rat
Applications :	WB;IF;ELISA
Target :	GPR27
Gene Name :	GPR27
Protein Name :	Probable G-protein coupled receptor 27
Human Gene Id :	2850
Human Swiss Prot No :	Q9NS67
Mouse Gene Id :	14761
Mouse Swiss Prot No :	O54897
Rat Gene Id :	65275
Rat Swiss Prot No :	Q9JJH3
Immunogen :	The antiserum was produced against synthesized peptide derived from human GPR27. AA range:181-230
Specificity :	GPR27 Polyclonal Antibody detects endogenous levels of GPR27 protein.
Formulation :	Liquid in PBS containing 50% glycerol, 0.5% BSA and 0.02% sodium azide.
Source :	Polyclonal, Rabbit,IgG
Dilution :	WB 1:500 - 1:2000. IF 1:200 - 1:1000. ELISA: 1:10000. Not yet tested in other applications.
Purification :	The antibody was affinity-purified from rabbit antiserum by affinity-chromatography using epitope-specific immunogen.

Concentration :	1 mg/ml
Storage Stability :	-15°C to -25°C/1 year(Do not lower than -25°C)
Observed Band :	39kD
Background :	GPR27 is a member of the G protein-coupled receptors (GPCRs), a large family of receptors that have a similar structure characterized by 7 transmembrane domains. Activation of GPCRs by extracellular stimuli such as neurotransmitters, hormones, or light induces an intracellular signaling cascade mediated by heterotrimeric GTP-binding proteins, or G proteins.[supplied by OMIM, May 2010],
Function :	function:Orphan receptor. Possible candidate for amine-like G-protein coupled receptor.,similarity:Belongs to the G-protein coupled receptor 1 family.,tissue specificity:Highly expressed as a 3.0 kb transcript in brain, ovary, testis, heart, prostate and peripheral Leukocytes. Lower levels in pancreas and small intestine. A 2.3 kb transcript was also found in peripheral Leukocytes. In brain regions, detected as a 3.0 kb transcript in all regions tested. Highest levels in the caudate nucleus, putamen, hippocampus and subthalamic nucleus. Lowest level in the cerebellum.,
Subcellular Location :	Cell membrane ; Multi-pass membrane protein .
Expression :	Highly expressed as a 3.0 kb transcript in brain, ovary, testis, heart, prostate and peripheral Leukocytes. Lower levels in pancreas and small intestine. A 2.3 kb transcript was also found in peripheral Leukocytes. In brain regions, detected as a 3.0 kb transcript in all regions tested. Highest levels in the caudate nucleus, putamen, hippocampus and subthalamic nucleus. Lowest level in the cerebellum.
Sort :	7040
No4 :	1
Host :	Rabbit
Modifications :	Unmodified

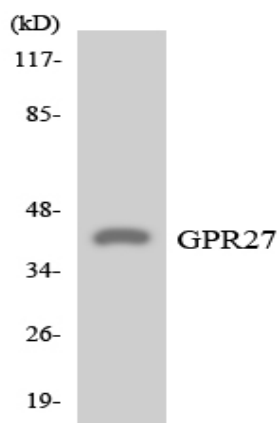
Products Images



Immunofluorescence analysis of A549 cells, using GPR27 Antibody. The picture on the right is blocked with the synthesized peptide.



Western blot analysis of lysates from HUVEC cells, using GPR27 Antibody. The lane on the right is blocked with the synthesized peptide.



Western blot analysis of the lysates from HeLa cells using GPR27 antibody.