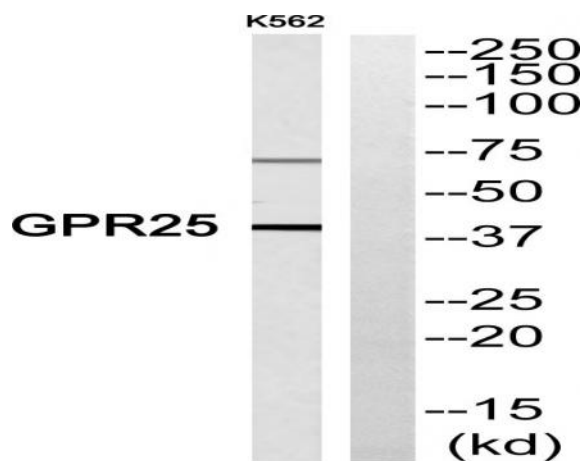


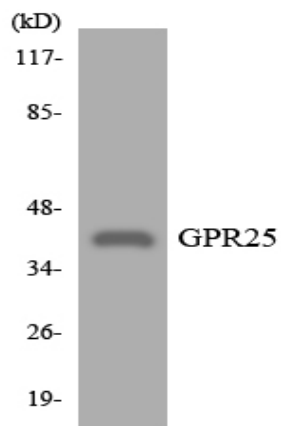
GPR25 Polyclonal Antibody

Catalog No :	YT2010
Reactivity :	Human;Rat;Mouse;
Applications :	WB;ELISA
Target :	GPR25
Gene Name :	GPR25
Protein Name :	Probable G-protein coupled receptor 25
Human Gene Id :	2848
Human Swiss Prot No :	O00155
Mouse Swiss Prot No :	P0C5I1
Immunogen :	The antiserum was produced against synthesized peptide derived from human GPR25. AA range:193-242
Specificity :	GPR25 Polyclonal Antibody detects endogenous levels of GPR25 protein.
Formulation :	Liquid in PBS containing 50% glycerol, 0.5% BSA and 0.02% sodium azide.
Source :	Polyclonal, Rabbit,IgG
Dilution :	WB 1:500 - 1:2000. ELISA: 1:5000. Not yet tested in other applications.
Purification :	The antibody was affinity-purified from rabbit antiserum by affinity-chromatography using epitope-specific immunogen.
Concentration :	1 mg/ml
Storage Stability :	-15°C to -25°C/1 year(Do not lower than -25°C)
Observed Band :	38kD

Background :	This gene is intronless and encodes a member of the G-protein coupled receptor 1 family. G-protein coupled receptors are membrane proteins which activate signaling cascades as a response to extracellular stress. This gene has been linked to arterial stiffness. [provided by RefSeq, Nov 2012],
Function :	function:Orphan receptor.,similarity:Belongs to the G-protein coupled receptor 1 family.,
Subcellular Location :	Cell membrane; Multi-pass membrane protein.
Expression :	Brain,
Sort :	7039
No4 :	1
Host :	Rabbit
Modifications :	Unmodified

Products Images





Western blot analysis of the lysates from K562 cells using GPR25 antibody.