

GPR22 Polyclonal Antibody

Catalog No :	YT2009
Reactivity :	Human;Mouse
Applications :	IF;ELISA
Target :	GPR22
Gene Name :	GPR22
Protein Name :	Probable G-protein coupled receptor 22
Human Gene Id :	2845
Human Swiss Prot No :	Q99680
Mouse Gene Id :	73010
Mouse Swiss Prot No :	Q8BZL4
Immunogen :	The antiserum was produced against synthesized peptide derived from human GPR22. AA range:271-320
Specificity :	GPR22 Polyclonal Antibody detects endogenous levels of GPR22 protein.
Formulation :	Liquid in PBS containing 50% glycerol, 0.5% BSA and 0.02% sodium azide.
Source :	Polyclonal, Rabbit,IgG
Dilution :	IF 1:200 - 1:1000. ELISA: 1:5000. Not yet tested in other applications.
Purification :	The antibody was affinity-purified from rabbit antiserum by affinity-chromatography using epitope-specific immunogen.
Concentration :	1 mg/ml
Storage Stability :	-15°C to -25°C/1 year(Do not lower than -25°C)

Molecularweight : 49kD

Background : This gene is a member of the G-protein coupled receptor 1 family and encodes a multi-pass membrane protein. [provided by RefSeq, Jul 2008],

Function : function:Orphan receptor.,similarity:Belongs to the G-protein coupled receptor 1 family.,tissue specificity:In the brain regions frontal cortex, caudate, putamen and thalamus; not in pons, hypothalamus and hippocampus.,

Subcellular Location : Cell membrane ; Multi-pass membrane protein .

Expression : High expression in adult and fetal heart tissue (PubMed:18539757). Expressed in the brain, with enrichment in the accumbens, amygdala, cerebellum, cortex, and hippocampus regions (PubMed:9073069, PubMed:18539757).

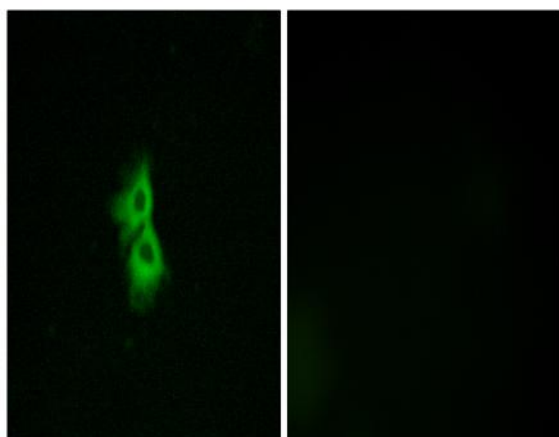
Sort : 7038

No4 : 1

Host : Rabbit

Modifications : Unmodified

Products Images



Immunofluorescence analysis of MCF7 cells, using GPR22 Antibody. The picture on the right is blocked with the synthesized peptide.