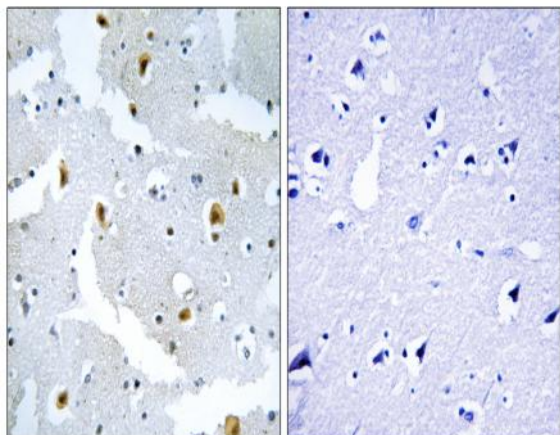


Formin 2 Polyclonal Antibody

Catalog No :	YT1737
Reactivity :	Human;Mouse
Applications :	IHC;IF;ELISA
Target :	Formin 2
Gene Name :	FMN2
Protein Name :	Formin-2
Human Gene Id :	56776
Human Swiss Prot No :	Q9NZ56
Mouse Gene Id :	54418
Mouse Swiss Prot No :	Q9JL04
Immunogen :	The antiserum was produced against synthesized peptide derived from human FMN2. AA range:1541-1590
Specificity :	Formin 2 Polyclonal Antibody detects endogenous levels of Formin 2 protein.
Formulation :	Liquid in PBS containing 50% glycerol, 0.5% BSA and 0.02% sodium azide.
Source :	Polyclonal, Rabbit,IgG
Dilution :	IHC 1:100 - 1:300. ELISA: 1:40000.. IF 1:50-200
Purification :	The antibody was affinity-purified from rabbit antiserum by affinity-chromatography using epitope-specific immunogen.
Concentration :	1 mg/ml
Storage Stability :	-15°C to -25°C/1 year(Do not lower than -25°C)

Molecularweight :	180kD
Cell Pathway :	Dorso-ventral axis formation;
Background :	This gene is a member of the formin homology protein family. The encoded protein is thought to have essential roles in organization of the actin cytoskeleton and in cell polarity. Mutations in this gene have been associated with mental retardation autosomal recessive 47 (MRT47). Alternatively spliced transcript variants have been identified. [provided by RefSeq, Mar 2015],
Function :	PTM:Phosphorylated upon DNA damage, probably by ATM or ATR.,sequence caution:Contaminating sequence. Sequence of unknown origin in the C-terminal part.,similarity:Belongs to the formin homology family. Cappuccino subfamily.,similarity:Contains 1 FH1 (formin homology 1) domain.,similarity:Contains 1 FH2 (formin homology 2) domain.,tissue specificity:Expressed almost exclusively in the developing and mature central nervous system.,
Subcellular Location :	Cytoplasm, cytoskeleton . Cytoplasm, cytosol . Cytoplasm, perinuclear region . Nucleus . Nucleus, nucleolus . Cell membrane ; Peripheral membrane protein ; Cytoplasmic side . Cytoplasmic vesicle membrane ; Peripheral membrane protein ; Cytoplasmic side . Cytoplasm, cell cortex . Colocalizes with the actin cytoskeleton (PubMed:20082305). Recruited to the membranes via its interaction with SPIRE1 (By similarity). Detected at the cleavage furrow during asymmetric oocyte division and polar body extrusion (By similarity). Accumulates in the nucleus following DNA damage (PubMed:26287480). .
Expression :	Expressed almost exclusively in the developing and mature central nervous system.
Sort :	6213
No4 :	1
Host :	Rabbit
Modifications :	Unmodified

Products Images



Immunohistochemistry analysis of paraffin-embedded human brain tissue, using FMN2 Antibody. The picture on the right is blocked with the synthesized peptide.