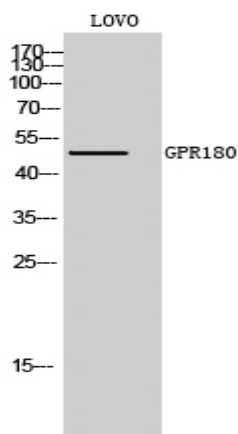


GPR180 Polyclonal Antibody

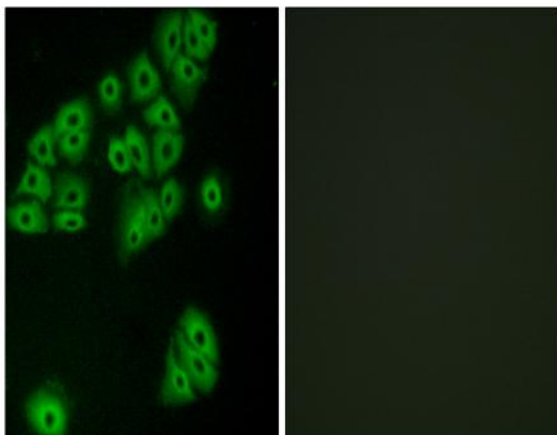
Catalog No :	YT2006
Reactivity :	Human;Mouse
Applications :	WB;IHC;IF;ELISA
Target :	GPR180
Gene Name :	GPR180
Protein Name :	Integral membrane protein GPR180
Human Gene Id :	160897
Human Swiss Prot No :	Q86V85
Mouse Gene Id :	58245
Mouse Swiss Prot No :	Q8BPS4
Immunogen :	The antiserum was produced against synthesized peptide derived from human GPR180. AA range:241-290
Specificity :	GPR180 Polyclonal Antibody detects endogenous levels of GPR180 protein.
Formulation :	Liquid in PBS containing 50% glycerol, 0.5% BSA and 0.02% sodium azide.
Source :	Polyclonal, Rabbit,IgG
Dilution :	WB 1:500 - 1:2000. IHC 1:100 - 1:300. IF 1:200 - 1:1000. ELISA: 1:10000. Not yet tested in other applications.
Purification :	The antibody was affinity-purified from rabbit antiserum by affinity-chromatography using epitope-specific immunogen.
Concentration :	1 mg/ml
Storage Stability :	-15°C to -25°C/1 year(Do not lower than -25°C)

Observed Band : 50kD**Background :** This gene encodes a protein that is a member of the G protein-coupled receptor superfamily. This protein is produced predominantly in vascular smooth muscle cells and may play an important role in the regulation of vascular remodeling. [provided by RefSeq, Jul 2008],**Subcellular Location :** Membrane ; Multi-pass membrane protein .**Expression :** Cerebellum,Cervix,Pancreas,**Sort :** 7035**No4 :** 1**Host :** Rabbit**Modifications :** Unmodified

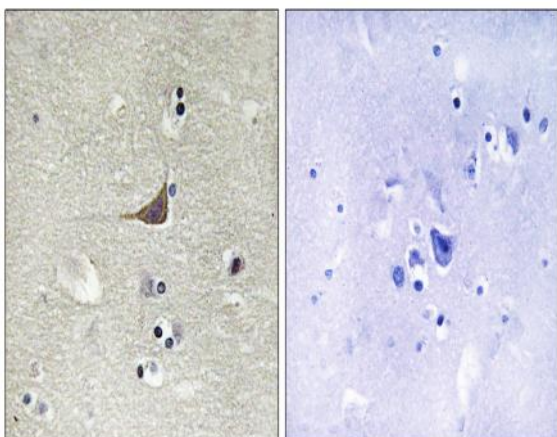
Products Images



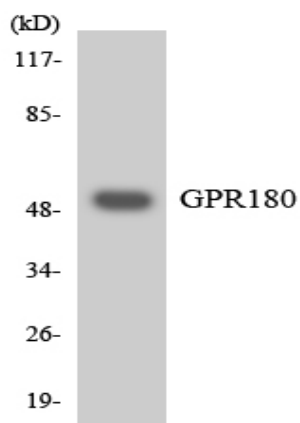
Western Blot analysis of LOVO cells using GPR180 Polyclonal Antibody



Immunofluorescence analysis of A549 cells, using GPR180 Antibody. The picture on the right is blocked with the synthesized peptide.



Immunohistochemistry analysis of paraffin-embedded human brain tissue, using GPR180 Antibody. The picture on the right is blocked with the synthesized peptide.



Western blot analysis of the lysates from Jurkat cells using GPR180 antibody.