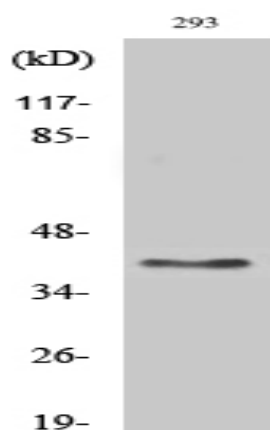


## GPR175 Polyclonal Antibody

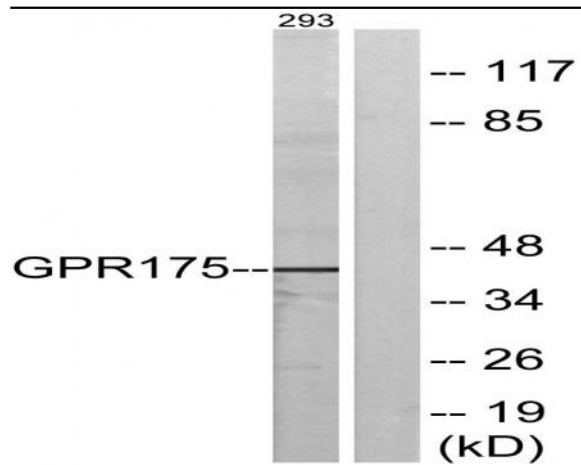
<b>Catalog No :</b>	YT2002
<b>Reactivity :</b>	Human;Mouse;Rat
<b>Applications :</b>	WB;IF;ELISA
<b>Target :</b>	GPR175
<b>Gene Name :</b>	TPRA1
<b>Protein Name :</b>	Transmembrane protein adipocyte-associated 1
<b>Human Gene Id :</b>	131601
<b>Human Swiss Prot No :</b>	Q86W33
<b>Mouse Gene Id :</b>	24100
<b>Mouse Swiss Prot No :</b>	Q99MU1
<b>Rat Gene Id :</b>	85494
<b>Rat Swiss Prot No :</b>	Q791F6
<b>Immunogen :</b>	The antiserum was produced against synthesized peptide derived from human GPR175. AA range:198-247
<b>Specificity :</b>	GPR175 Polyclonal Antibody detects endogenous levels of GPR175 protein.
<b>Formulation :</b>	Liquid in PBS containing 50% glycerol, 0.5% BSA and 0.02% sodium azide.
<b>Source :</b>	Polyclonal, Rabbit,IgG
<b>Dilution :</b>	WB 1:500 - 1:2000. IF 1:200 - 1:1000. ELISA: 1:20000. Not yet tested in other applications.
<b>Purification :</b>	The antibody was affinity-purified from rabbit antiserum by affinity-chromatography using epitope-specific immunogen.

<b>Concentration :</b>	1 mg/ml
<b>Storage Stability :</b>	-15°C to -25°C/1 year(Do not lower than -25°C)
<b>Observed Band :</b>	41kD
<b>Background :</b>	TPRA1 is a gene on chromosome 3q21.3 that encodes transmembrane protein adipocyte-associated 1 expressed in most tissues, especially in heart, placenta and kidney, and plays role in lipid metabolism and in ageing. Gene Ontology (GO) annotations related to this gene include G-protein coupled receptor activity.
<b>Function :</b>	aging,
<b>Subcellular Location :</b>	Membrane; Multi-pass membrane protein.
<b>Expression :</b>	Ubiquitous, with higher levels in heart, placenta and kidney.
<b>Sort :</b>	7031
<b>No4 :</b>	1
<b>Host :</b>	Rabbit
<b>Modifications :</b>	Unmodified

## Products Images



Western Blot analysis of various cells using GPR175 Polyclonal Antibody diluted at 1:2000



Western blot analysis of lysates from 293 cells, using GPR175 Antibody. The lane on the right is blocked with the synthesized peptide.