

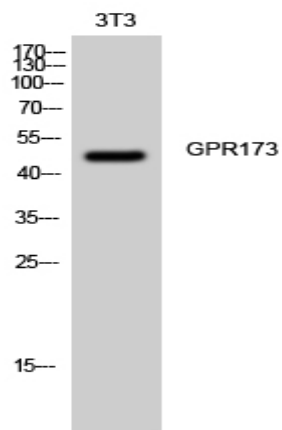
## GPR173 Polyclonal Antibody

<b>Catalog No :</b>	YT1998
<b>Reactivity :</b>	Human;Mouse;Rat
<b>Applications :</b>	WB;IF;ELISA
<b>Target :</b>	GPR173
<b>Gene Name :</b>	GPR173
<b>Protein Name :</b>	Probable G-protein coupled receptor 173
<b>Human Gene Id :</b>	54328
<b>Human Swiss Prot No :</b>	Q9NS66
<b>Mouse Gene Id :</b>	70771
<b>Mouse Swiss Prot No :</b>	Q6PI62
<b>Rat Gene Id :</b>	64021
<b>Rat Swiss Prot No :</b>	Q9JJH2
<b>Immunogen :</b>	The antiserum was produced against synthesized peptide derived from human GPR173. AA range:251-300
<b>Specificity :</b>	GPR173 Polyclonal Antibody detects endogenous levels of GPR173 protein.
<b>Formulation :</b>	Liquid in PBS containing 50% glycerol, 0.5% BSA and 0.02% sodium azide.
<b>Source :</b>	Polyclonal, Rabbit,IgG
<b>Dilution :</b>	WB 1:500 - 1:2000. IF 1:200 - 1:1000. ELISA: 1:10000. Not yet tested in other applications.
<b>Purification :</b>	The antibody was affinity-purified from rabbit antiserum by affinity-chromatography using epitope-specific immunogen.

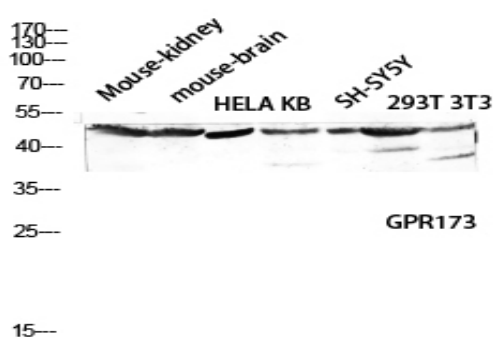
<b>Concentration :</b>	1 mg/ml
<b>Storage Stability :</b>	-15°C to -25°C/1 year(Do not lower than -25°C)
<b>Observed Band :</b>	47kD
<b>Background :</b>	This gene encodes a member of the G-protein coupled receptor 1 family. This protein contains 7 transmembrane domains and conserved cysteine residues. [provided by RefSeq, Nov 2009],
<b>Function :</b>	function:Orphan receptor.,similarity:Belongs to the G-protein coupled receptor 1 family.,tissue specificity:Expressed at high levels in brain and ovary. Lower levels in small intestine. In brain regions, detected in all regions tested. Highest levels in the cerebellum and cerebral cortex.,
<b>Subcellular Location :</b>	Cell membrane ; Multi-pass membrane protein .
<b>Expression :</b>	Expressed in the ovary, specifically in granulosa cells of follicles that have passed the primary stage and in oocytes (at protein level) (PubMed:30933929). Expressed at high levels in brain. Lower levels in small intestine. In brain regions, detected in all regions tested. Highest levels in the cerebellum and cerebral cortex.
<b>Sort :</b>	7026
<b>No4 :</b>	1
<b>Host :</b>	Rabbit
<b>Modifications :</b>	Unmodified

---

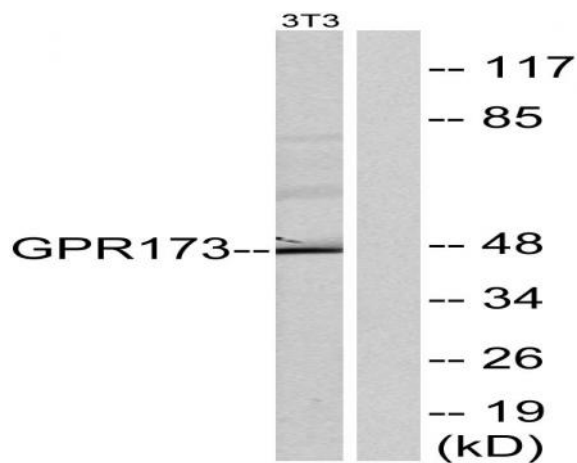
## Products Images



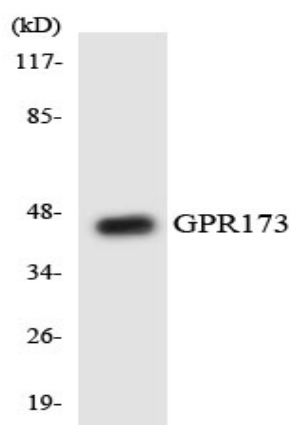
Western Blot analysis of 3T3 cells using GPR173 Polyclonal Antibody diluted at 1:2000



Western blot analysis of Mouse-kidney mouse-brain HELA KB SH-SY5Y 293T 3T3 lysis using GPR173 antibody. Antibody was diluted at 1:2000



Western blot analysis of lysates from NIH/3T3 cells, using GPR173 Antibody. The lane on the right is blocked with the synthesized peptide.



Western blot analysis of the lysates from COLO205 cells using GPR173 antibody.