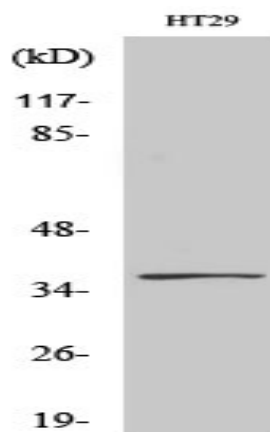


GPR171 Polyclonal Antibody

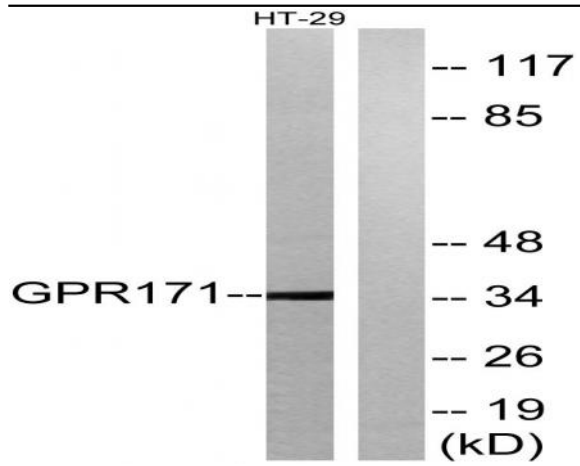
Catalog No :	YT1993
Reactivity :	Human;Rat;Mouse;
Applications :	WB;IF;ELISA
Target :	GPR171
Gene Name :	GPR171
Protein Name :	Probable G-protein coupled receptor 171
Human Gene Id :	29909
Human Swiss Prot No :	O14626
Mouse Swiss Prot No :	Q8BG55
Immunogen :	The antiserum was produced against synthesized peptide derived from human GPR171. AA range:181-230
Specificity :	GPR171 Polyclonal Antibody detects endogenous levels of GPR171 protein.
Formulation :	Liquid in PBS containing 50% glycerol, 0.5% BSA and 0.02% sodium azide.
Source :	Polyclonal, Rabbit,IgG
Dilution :	WB 1:500 - 1:2000. IF 1:200 - 1:1000. ELISA: 1:10000. Not yet tested in other applications.
Purification :	The antibody was affinity-purified from rabbit antiserum by affinity-chromatography using epitope-specific immunogen.
Concentration :	1 mg/ml
Storage Stability :	-15°C to -25°C/1 year(Do not lower than -25°C)
Observed Band :	36kD

Background :	function:Orphan receptor.,similarity:Belongs to the G-protein coupled receptor 1 family.,
Function :	function:Orphan receptor.,similarity:Belongs to the G-protein coupled receptor 1 family.,
Subcellular Location :	Cell membrane ; Multi-pass membrane protein . Colocalized with GPR83 in the paraventricular nucleus. .
Expression :	Expressed in both T-cell subsets and natural killer cells, while it is undetectable in B cells or CD14(+) monocytes. Expressed in peripheral blood mononuclear cells (PBMC) and Jurkat cells (at protein level).
Sort :	7023
No4 :	1
Host :	Rabbit
Modifications :	Unmodified

Products Images



Western Blot analysis of various cells using GPR171 Polyclonal Antibody



Western blot analysis of lysates from HT-29 cells, using GPR171 Antibody. The lane on the right is blocked with the synthesized peptide.