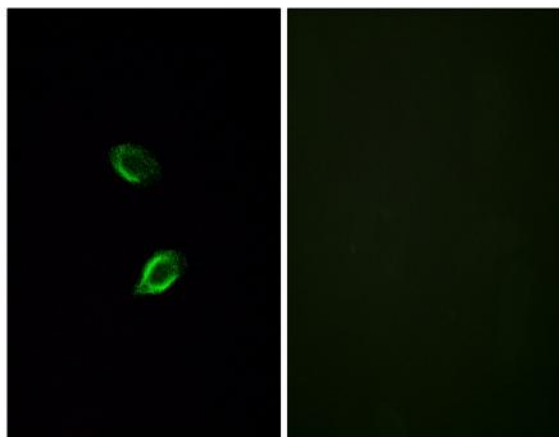


GPR157 Polyclonal Antibody

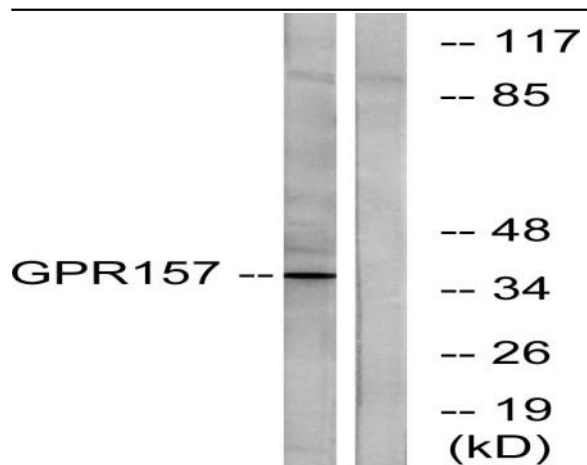
Catalog No :	YT1988
Reactivity :	Human;Rat;Mouse;
Applications :	WB;IF;ELISA
Target :	GPR157
Gene Name :	GPR157
Protein Name :	Probable G-protein coupled receptor 157
Human Gene Id :	80045
Human Swiss Prot No :	Q5UAW9
Mouse Swiss Prot No :	Q8C206
Immunogen :	The antiserum was produced against synthesized peptide derived from human GPR157. AA range:81-130
Specificity :	GPR157 Polyclonal Antibody detects endogenous levels of GPR157 protein.
Formulation :	Liquid in PBS containing 50% glycerol, 0.5% BSA and 0.02% sodium azide.
Source :	Polyclonal, Rabbit,IgG
Dilution :	WB 1:500 - 1:2000. IF 1:200 - 1:1000. ELISA: 1:5000. Not yet tested in other applications.
Purification :	The antibody was affinity-purified from rabbit antiserum by affinity-chromatography using epitope-specific immunogen.
Concentration :	1 mg/ml
Storage Stability :	-15°C to -25°C/1 year(Do not lower than -25°C)
Observed Band :	37kD

Background :	function:Orphan receptor.,similarity:Belongs to the G-protein coupled receptor 2 family.,
Function :	function:Orphan receptor.,similarity:Belongs to the G-protein coupled receptor 2 family.,
Subcellular Location :	Cell projection, cilium membrane ; Multi-pass membrane protein . Expressed in the primary cilia of radial glial progenitors (RGPs) exposed to the cerebrospinal fluid. .
Expression :	Mammary gland,Placenta,Prostate,
Sort :	7017
No4 :	1
Host :	Rabbit
Modifications :	Unmodified

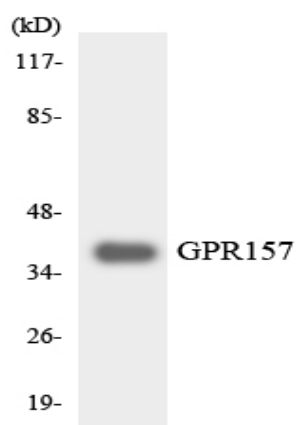
Products Images



Immunofluorescence analysis of HUVEC cells, using GPR157 Antibody. The picture on the right is blocked with the synthesized peptide.



Western blot analysis of lysates from NIH/3T3 cells, using GPR157 Antibody. The lane on the right is blocked with the synthesized peptide.



Western blot analysis of the lysates from RAW264.7 cells using GPR157 antibody.