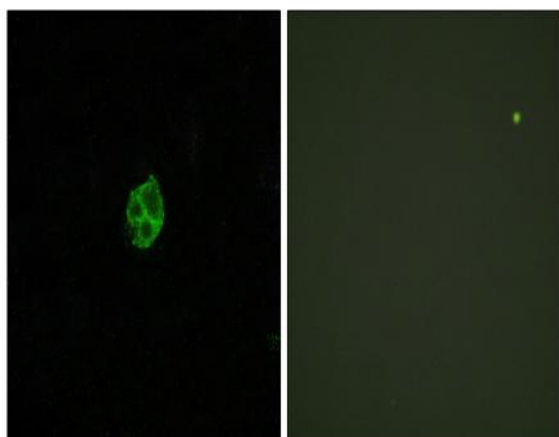


GPR151 Polyclonal Antibody

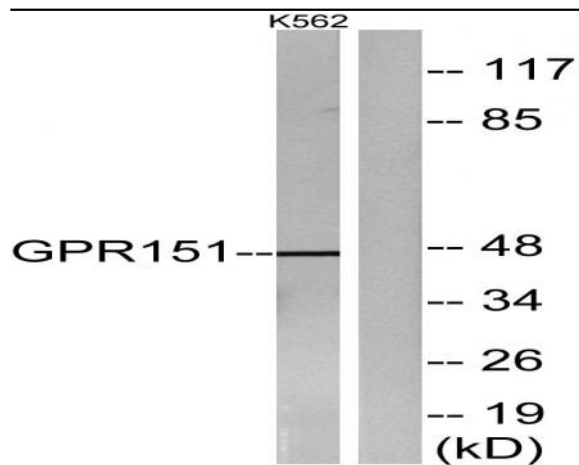
Catalog No :	YT1982
Reactivity :	Human;Mouse;Rat
Applications :	WB;IF;ELISA
Target :	GPR151
Gene Name :	GPR151
Protein Name :	Probable G-protein coupled receptor 151
Human Gene Id :	134391
Human Swiss Prot No :	Q8TDV0
Mouse Gene Id :	240239
Mouse Swiss Prot No :	Q7TSN6
Rat Gene Id :	307475
Rat Swiss Prot No :	Q7TSN5
Immunogen :	The antiserum was produced against synthesized peptide derived from human GPR151. AA range:370-419
Specificity :	GPR151 Polyclonal Antibody detects endogenous levels of GPR151 protein.
Formulation :	Liquid in PBS containing 50% glycerol, 0.5% BSA and 0.02% sodium azide.
Source :	Polyclonal, Rabbit,IgG
Dilution :	WB 1:500 - 1:2000. IF 1:200 - 1:1000. ELISA: 1:5000. Not yet tested in other applications.
Purification :	The antibody was affinity-purified from rabbit antiserum by affinity-chromatography using epitope-specific immunogen.

Concentration :	1 mg/ml
Storage Stability :	-15°C to -25°C/1 year(Do not lower than -25°C)
Observed Band :	46kD
Background :	function:Orphan receptor.,similarity:Belongs to the G-protein coupled receptor 1 family.,
Function :	function:Orphan receptor.,similarity:Belongs to the G-protein coupled receptor 1 family.,
Subcellular Location :	Cell membrane ; Multi-pass membrane protein .
Expression :	High expression in the spinal cord.
Sort :	7010
No4 :	1
Host :	Rabbit
Modifications :	Unmodified

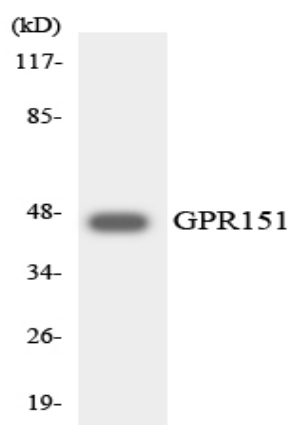
Products Images



Immunofluorescence analysis of HUVEC cells, using GPR151 Antibody. The picture on the right is blocked with the synthesized peptide.



Western blot analysis of lysates from K562 cells, using GPR151 Antibody. The lane on the right is blocked with the synthesized peptide.



Western blot analysis of the lysates from HeLa cells using GPR151 antibody.